

Contents

1. Hardware and Software requirements	4
2. Installation	4
3. Fundamental concepts	5
3.1 Function selection menus and pushbuttons	5
4. Start-up menu	8
5. Project configuration	9
5.1 Network connections	9
5.1.1 Ethernet	9
5.2 General parameters	10
5.2.1 Clock	10
5.2.2 Univocal codes	11
5.3 Security	12
5.3.1 Authentications	12
5.3.2 Web session	12
5.3.3 Enabling IP addresses	13
5.3.4 Remote command	14
5.4 System configuration	16
5.4.1 Interfaces	16
5.4.2 Actuators	17
5.4.3 Sensors (Lighting Management systems only)	18
6. Open project	19
7. Download and upload the project	20
7.1 Download	20
7.2 Upload	22
8. Updating Firmware	23
9. Scenario Editor	24
9.1 Creating and modifying a Collection	24
9.1.1 Main screen page and related menus	25
9.1.2 Importing scenarios from a Collection	27
9.2 Creating and modifying a Scenario	28
9.2.1 Main screen page and related menus	29
9.2.2 Configuring a scenario	31
9.2.3 Families/Objects	32
9.2.4 Entry fields	52
10. Maximum number of scenarios and events managed by MH200N	55

1. Hardware and Software requirements



Attention: The TIMH200N program is the fundamental tool for configuring the My Home control de-vices. The content of this program is the subject of exclusive Bticino SpA rights.

Hardware requirements

- Personal Computer with 300 MHz Pentium processor minimum
- 512 MB RAM memory
- SVGA graphic card with 800x600 resolution
- CD-ROM reader
- Mouse

Software requirements

- Windows XP 32BIT or Windows Vista 32BIT
- Internet Explorer 6.0 or higher

2. Installation

To install the TIMH200N program proceed as described:

1. Put the Cd-Rom into its drive;
2. After the main page is displayed in the web format, select "Software" and then "Install TIMH200N";
3. The installation program will copy the system files needed to run the TIMH200N program. Confirming the operations from time to time the following screens will be displayed:

3. Fundamental concepts



Warning: In order for the software to run correctly, the MH200N device must be installed as indicated on the instruction leaflet.

TiMH200N is an application that enables creating scenarios (light points, shutters etc.) with varying degrees of complexity, to respond to time or system related occurrences (alarms, pressing of buttons etc.).

For example, the user will be able to carry out “presence simulation sequences” (setting the system so that all the roller shutters will open at a set time of the day, and then close again, while the lights will come on), control several groups of lights using one switch. All this, without an excessive degree of effort during the configuration of the system, etc.

The scenarios created are grouped in a collection which is saved directly in the project. The collection enables memorizing of several scenarios, only activating the required ones.

The project created must be downloaded in the Scenario Programmer. This is simply done by connecting the device to the PC using a crossover type cable, connected to the LAN network of the Scenario Programmer and the PC Ethernet card. It is also possible to update the Scenario Programmer using the IP address and password (for more information read the user manual supplied with the unit).

In the same way, it is possible to upload the files from the unit to check their configuration.

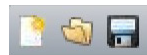
The TiMH200N program also enables updating of the unit base MH200N software, by downloading new versions of the software from the Bticino website (Update Firmware).

Creation of a configuration data file that can be imported into Microsoft Excel®.

3.1 Function selection menus and pushbuttons

All the functions which can be run with TiMH200N can be selected by means of the icons in the tool bar, or by opening the pull-down menus and selecting the various items.

The tool bar has the following options:



Creation, Open and Save configuration file



Upload, Download the configuration



Update device firmware



Request of device information

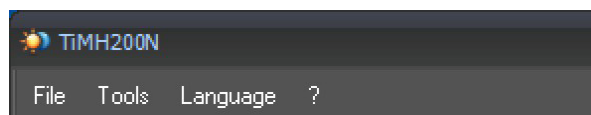


Selection of the application language

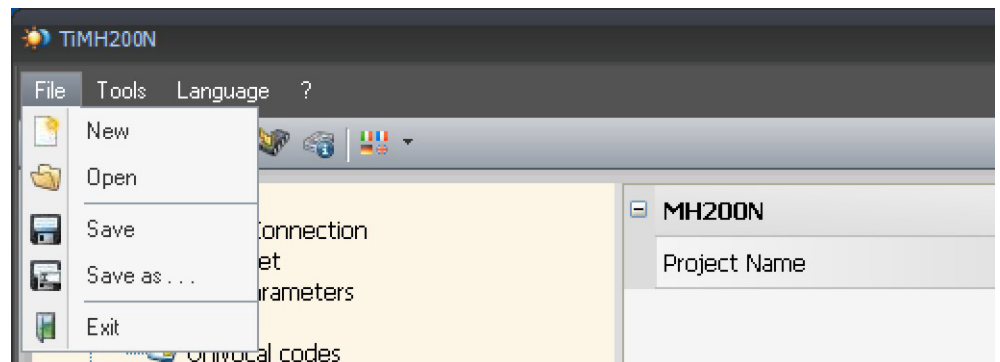


Connection to the www.bticino.com site

The pull-down menu has the following options:

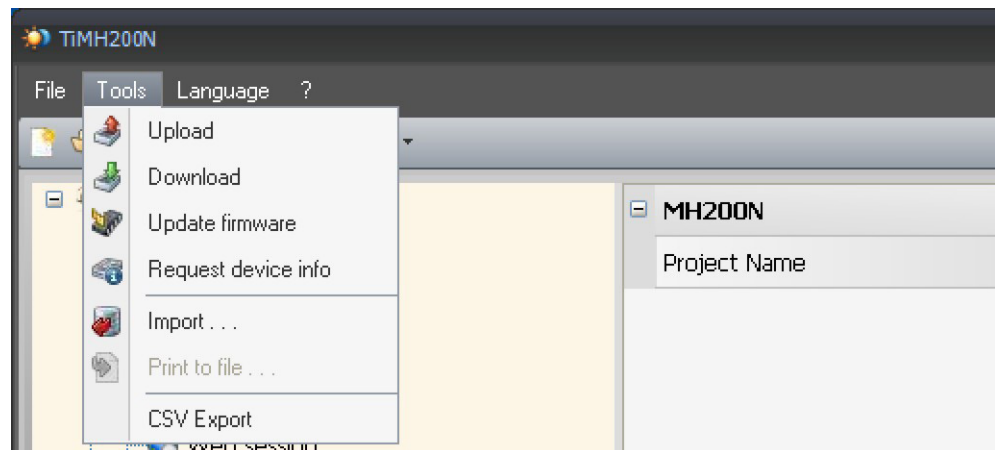


“File” menu



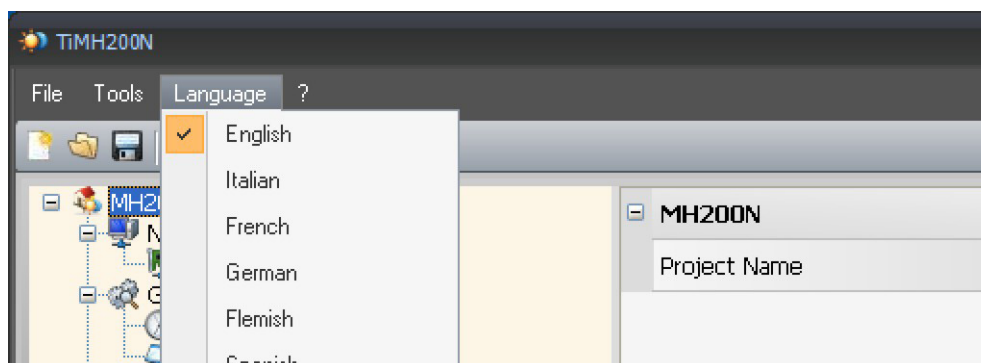
- **New**
Creates a new project
- **Open**
Opens an existing configuration file
- **Save**
Saves the current project
- **Save as...**
Saves the current project asking for a name for the file
- **Exit**
Exits the program

“Tools” menu



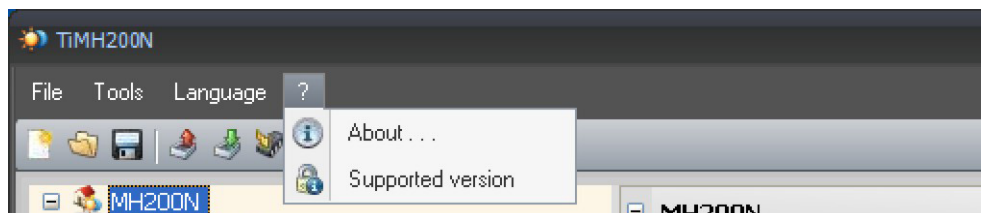
- **Upload**
It Acquires and displays the current device configuration
- **Download**
Downloads the configuration to the device
- **Update firmware**
Updates the device firmware
- **Request device info**
Enables to display technical information
- **Import**
Enables to import a project file with .mhz extension (future application)
- **Print to file**
It creates a file containing the configuration data, which can be imported into Microsoft Excel®.
- **CSV Export**
Export a .csv project file, so that it can be opened using Microsoft Excel®.

“Language” menu



- **Language**
Can select the application language

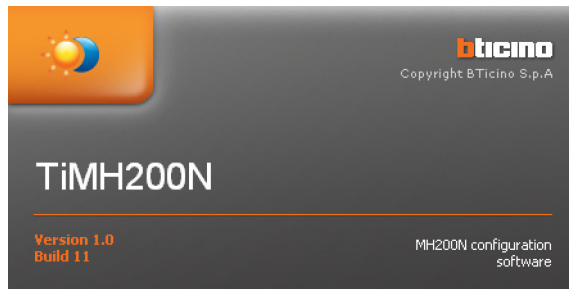
“?” menu



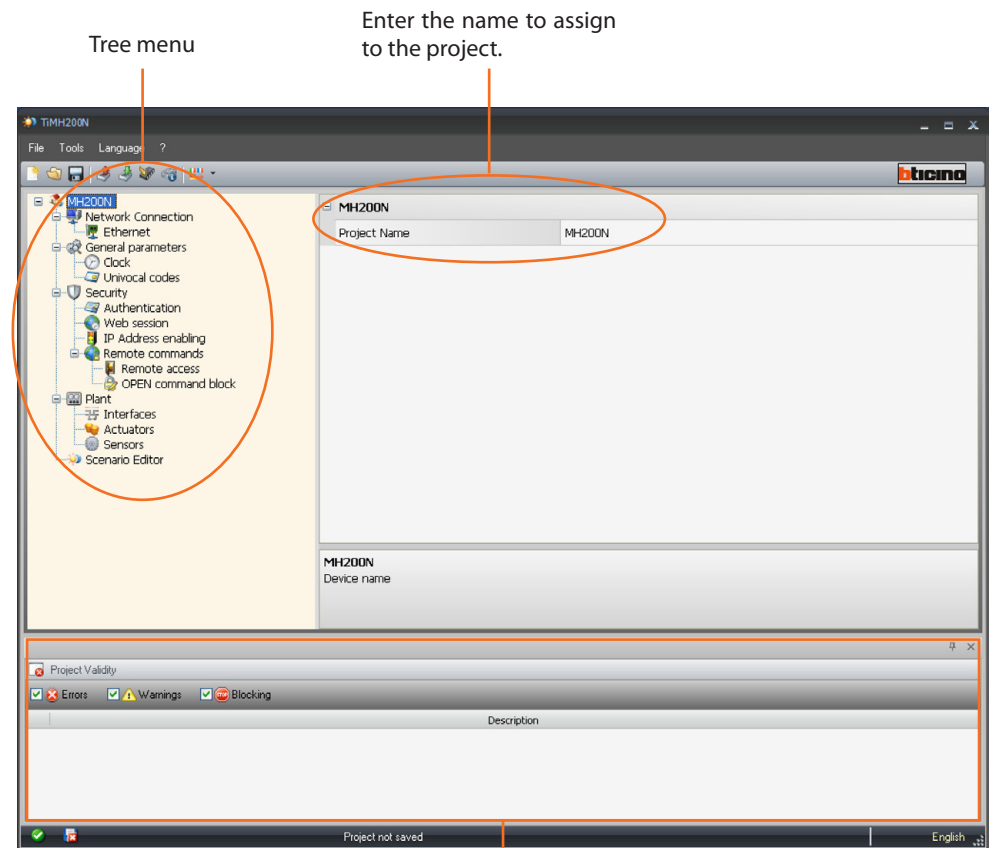
- **About...**
It displays some TiMH200N program information
- **Supported version**
It displays the list of TiMH200N firmware versions supported by the program in a table format

4. Start-up menu

When the TIMH200N application is started, the presentation screen appears



This is followed by a screen showing all the configuration parameters in order of importance, on a Tree menu on the left of the display.



Tree menu

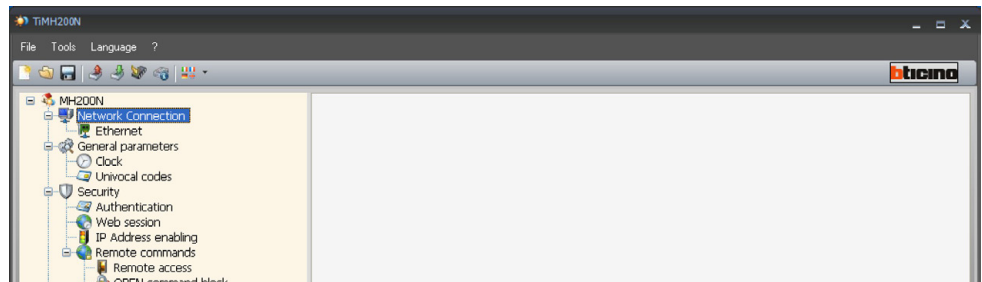
Enter the name to assign to the project.

In this area, the user can check for any mistakes made during the creation of the project.

Selecting an element on the Tree view, will show its content on the main window. This could either be a folder or a specific data input mask.

5. Project configuration

5.1 Network connections

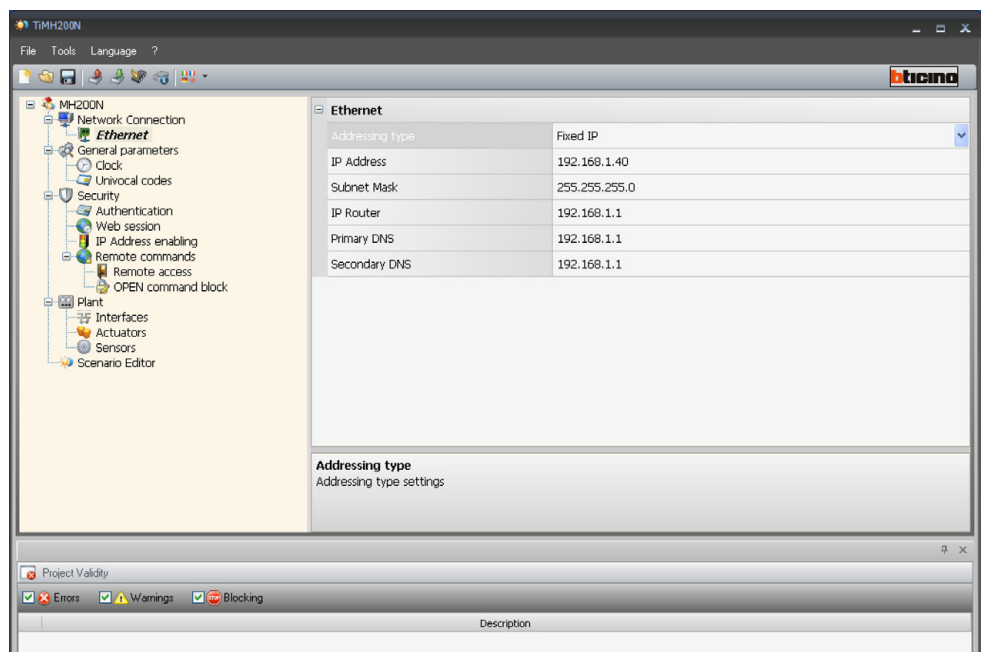


5.1.1 Ethernet

Here we find the mask for entering the connection parameters to the Ethernet net-work.



Before editing the default values, contact the network administrator. Incorrect values, as well as making the service inactive, could cause malfunctions in the communication of other network equipment.

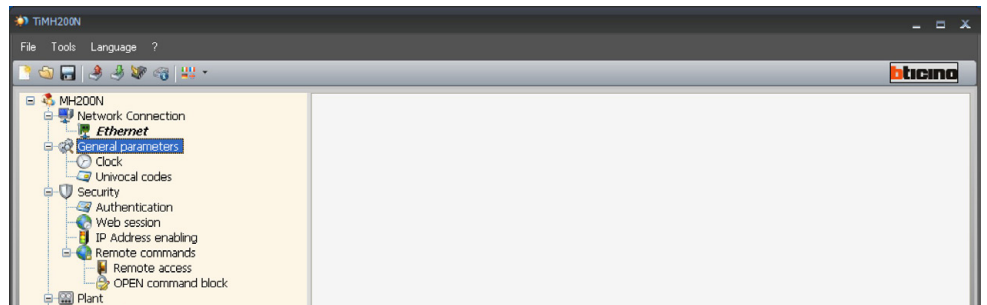


To enable the connection to the Scenario Programmer through the Ethernet network, select either a **Dynamic** IP, or a **Static** IP address. If the first type is selected, it will not be necessary to configure the parameters; if the second type is selected, the following must be configured:

- **IP scenario programmer and Subnet mask**
Typical parameters of networks with TCP/IP protocol. They are used to identify the Scenario programmer inside the local network. Remember that the "Scenario programmer needs a "static" (fixed and unique) IP address to be able to work correctly.
- **IP router**
Router IP address, if there is one. If there is a router the field must be filled in, to guarantee outgoing Services, such as sending e-mail.
- **Primary DNS and secondary DNS**
Primary and secondary IP address of the Internet Service Provider (ISP), supplied when the subscription is taken out.

Alternatively, the default values can be used.

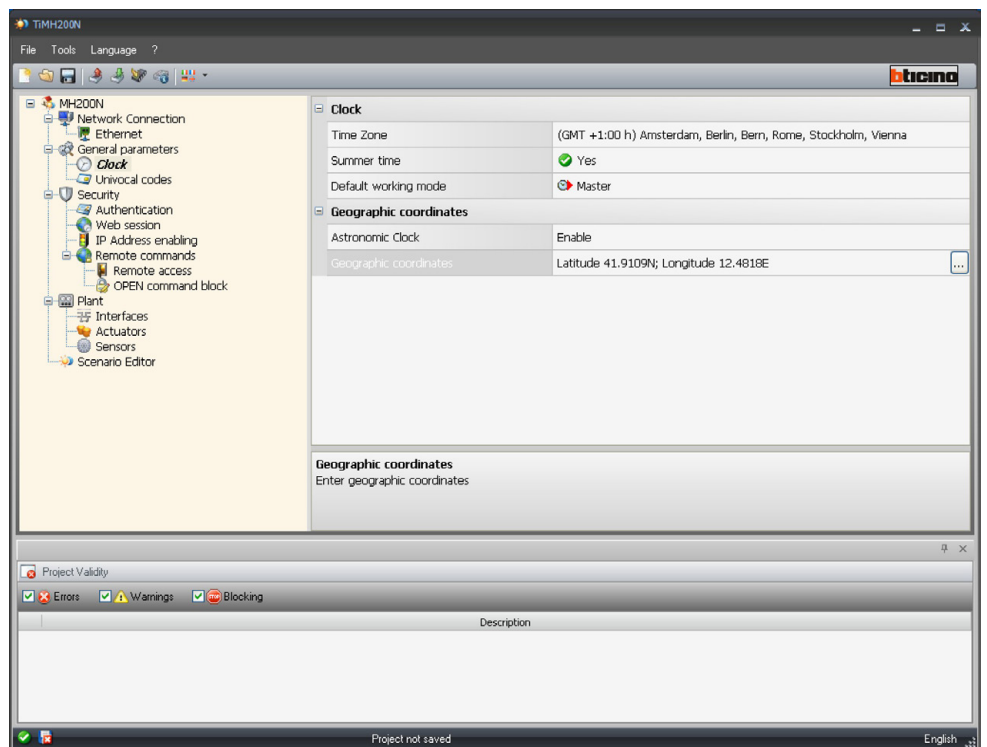
5.2 General parameters



5.2.1 Clock

This function is used to set the local **Time Zone**, to select the **Summer time**, and if the device is operating as a “Master” or a “Slave” (**Default working mode**).

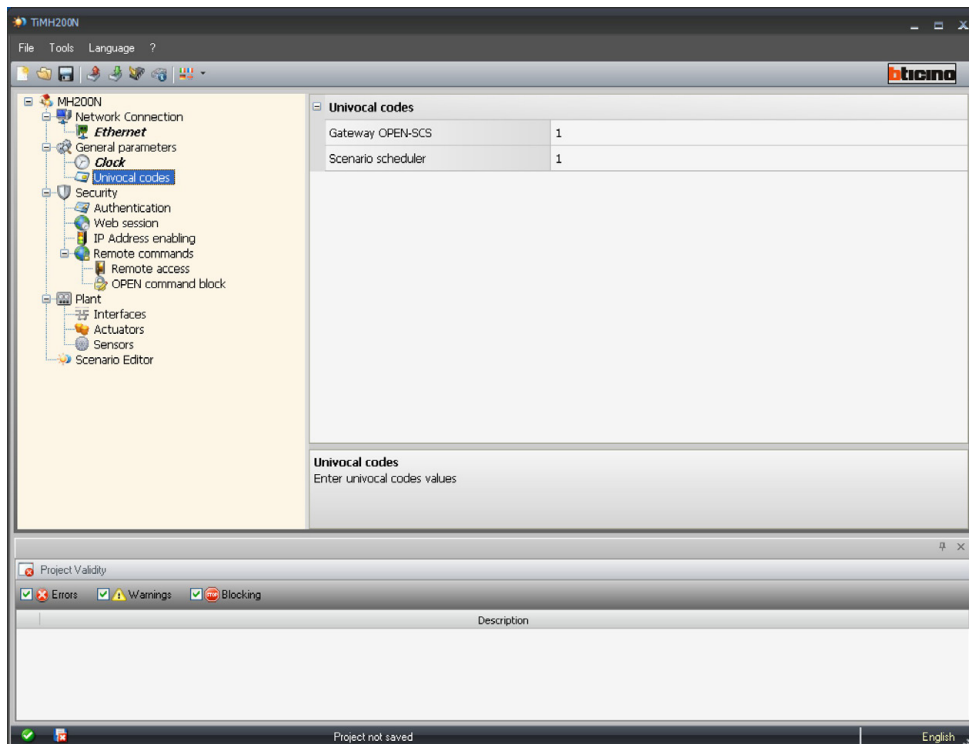
If set as Master, the clock inside the device will be used as time reference for all other My Home system devices.



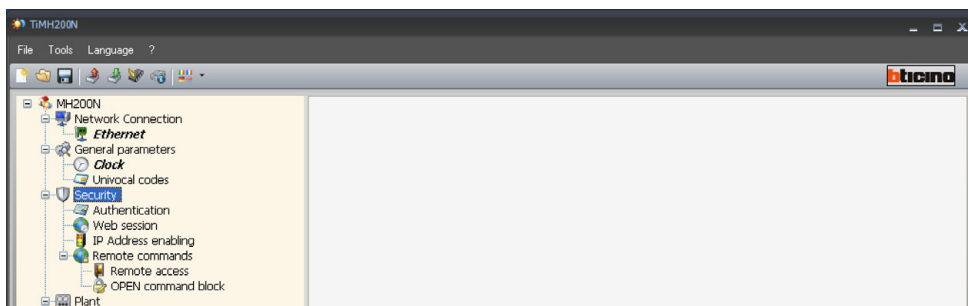
Enable the “Astronomic Clock” to set the geographical coordinates of the MH200N device.

5.2.2 Univocal codes

This function can be used to assign to MH200 two univocal addresses for the OPEN-SCA interface function, and for the scenario programmer functions, so that it can always be identified on the My Home system.



5.3 Security



5.3.1 Authentications

Web users

In this section the user is requested to enter the name and the password that will be used for authentication, enabling, and access to the services offered by the selected device

- **User Login and Password**
default Login and Password "bticino"
- **Administrator Login and Password**
Default login "admin", Password "bticino"

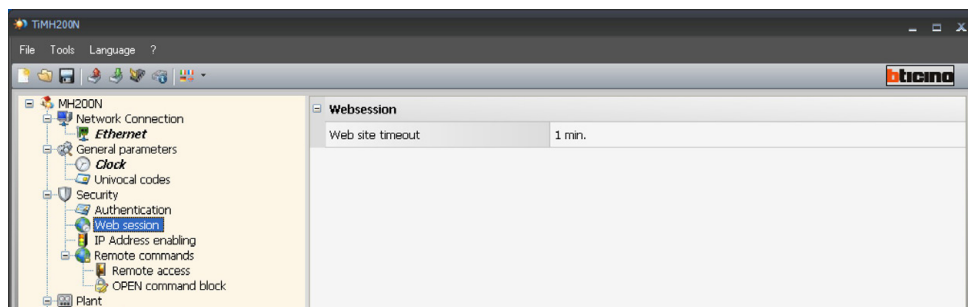


Authentication

- **Open Password**
Enter the OPEN password if the device is used to remotely control the My Home system using PC programs and external Services.

5.3.2 Web session

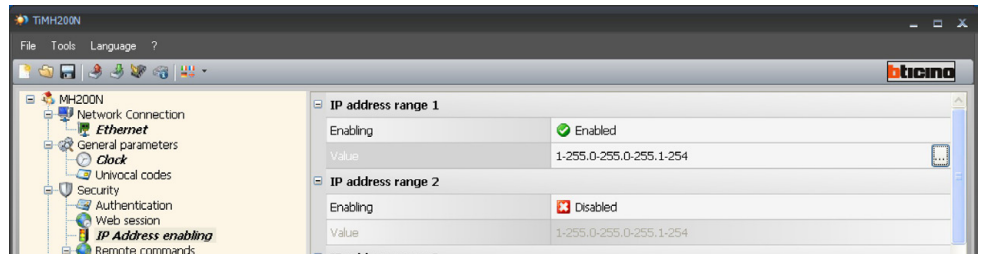
In this section the user can define the time of inactivity of the web page, upon which expiry MH200N will take the user back to the identification page.




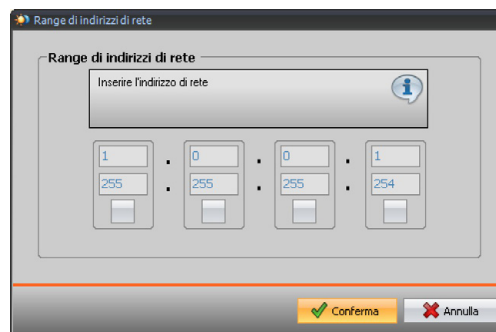
- **Web site timeout**
Select the web page inactivity time: 1, 2, 5 or 15 minutes.

5.3.3 Enabling IP addresses

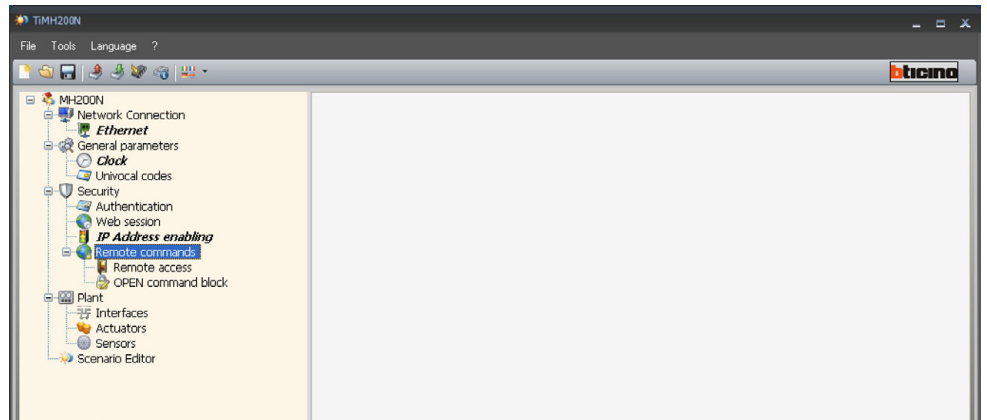
Various ranges of IP address, enabled for connection without having to identify by login and password, can be entered in this section.



Click  to enter the IP address range



5.3.4 Remote command



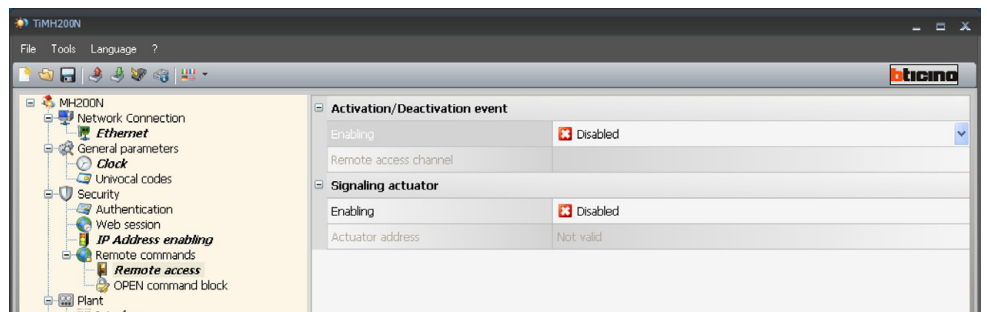
Remote access

Whenever required this function can exclude any control of the remote enabling, disabling the Scenario programmer to LAN and/or Internet connection. This is done by installing control devices such as L4651/2 in the Automation BUS.

These devices are configured to send ON (deactivation) and OFF commands (enabling) via one of the nine auxiliary channels (AUX) which must be selected in the box.

- **Activation/deactivation event**

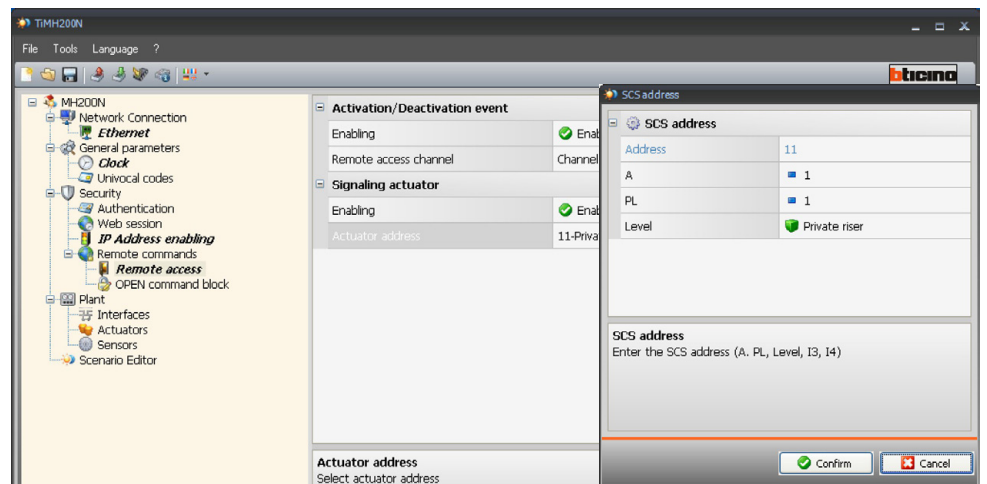
Enter the auxiliary channel dedicated to activating/deactivating the remote access.



The state of the connection can be displayed by the lighting up of a light signal controlled by an Automation system actuator; the configuration of this device must be given by setting the parameters in the box:

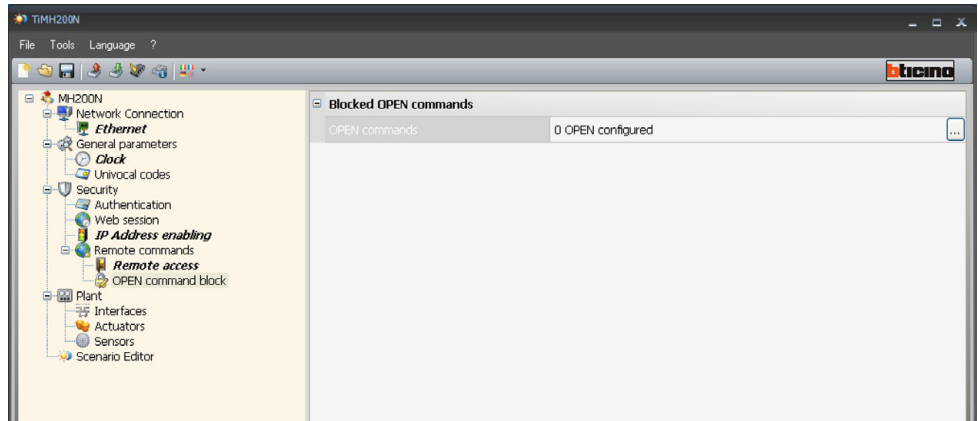
- **Signalling actuator**

Enable a light point to use as signalling actuator.



Block OPEN commands

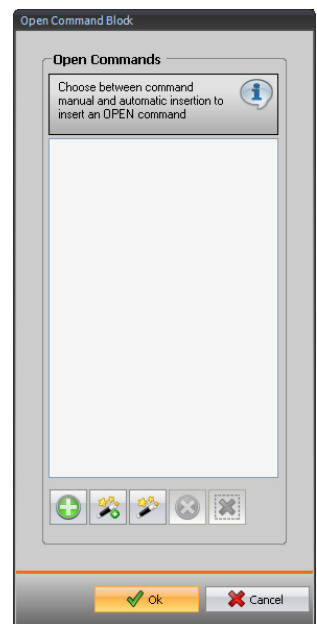
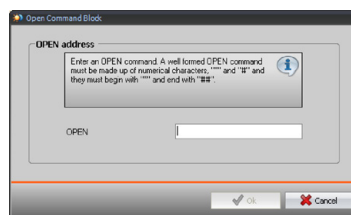
If necessary this function can disable the Scenario programmer from sending some commands to the Automation, Burglar alarm, Load check and video door entry systems of the My Home system in the home. The forbidden commands (max 20) are defined by describing them in the correct area according to the "Open Web Net" protocol.



On enabling the function a window to enter the commands is displayed.

There are two ways of compiling the command:

- **Manual**
allows direct entry of a command.




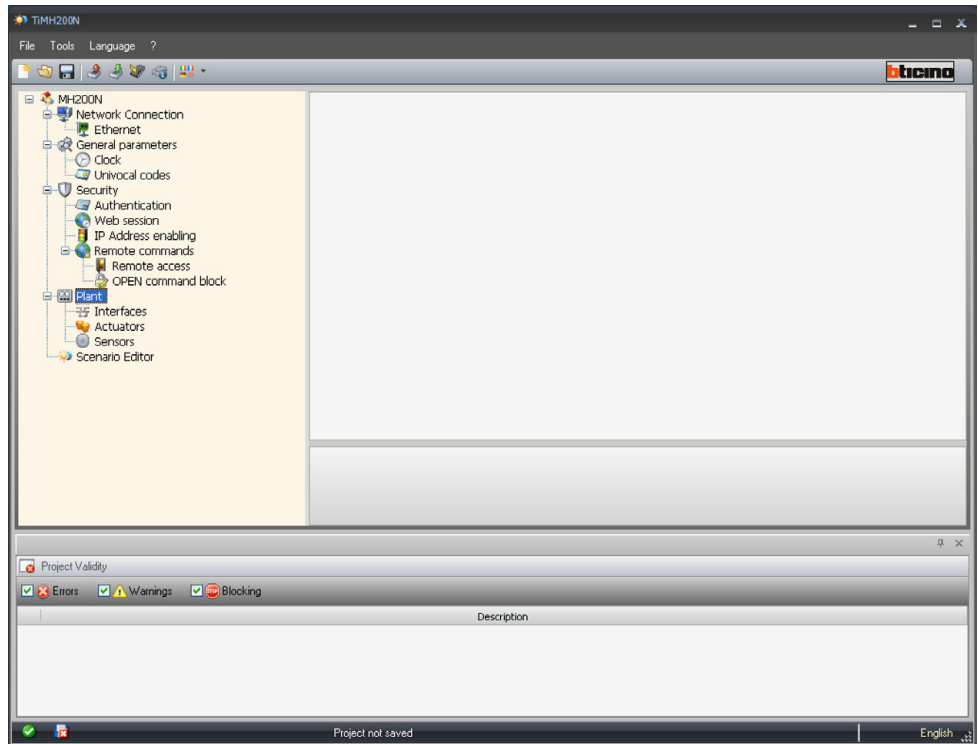
- **Guided**
The command can be defined automatically, selecting the configuration and type of command to be blocked in the menu.



5.4 System configuration






In this section you can configure up to 10 systems, understood as stretches of systems connected together by means of interfaces F422 configured in mode 2 “logical extension”. This mode can separate the automation systems, each of which can thus use all the addresses available. Up to 9 systems can thus be connected on an Automation bus (local bus) and all the 81 addresses are available for each of them. The private riser bus (default System 1) on which all the others are connected acts as private riser.

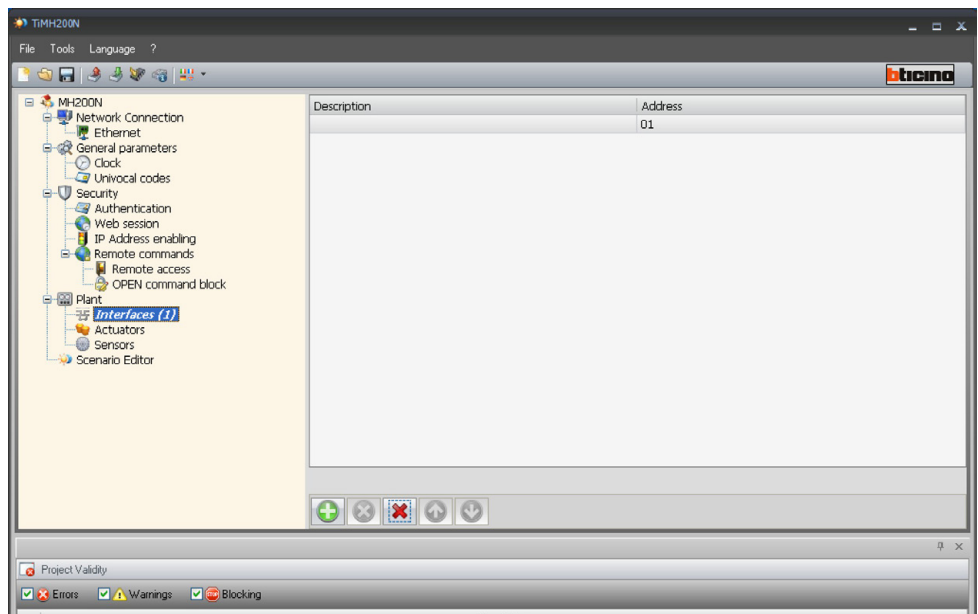
 For some devices, extended addresses are displayed (from A=0, PL=1 to A=10, PL=15); This type of addressing is only applicable to Lighting Management systems



5.4.1 Interfaces






In this page, using the “Add” pushbutton, you can enter up to 10 separation interfaces F422. Each interface must be configured entering the separation address (I3, I4) between private riser and local bus.

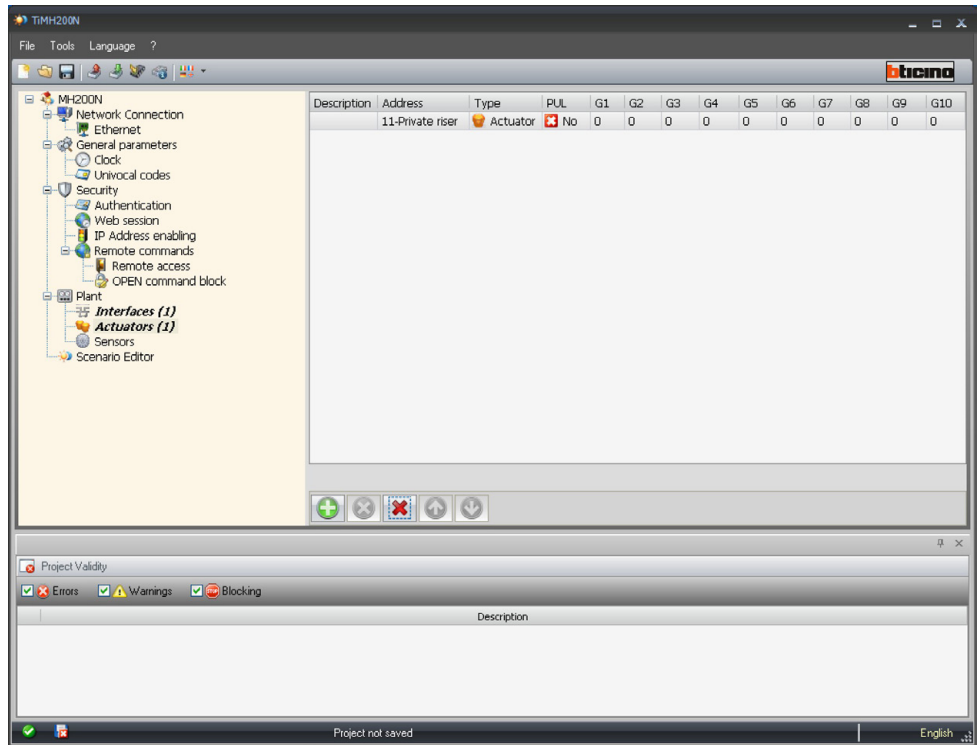
-  Add a new interface
-  Remove the selected interface
-  Remove all interfaces
-  Move the selected interface up
-  Move the selected interface down




5.4.2 Actuators

In this page, using the “Add” pushbutton, you can enter the Actuators. Each Actuator must be configured entering the address, the interface level and the address of the expansion interface (if there is one). The device address must be between A=1, PL=1, and A=9, PL=9.

-  Add a new actuator
-  Remove the selected actuator
-  Remove all actuators
-  Move the selected actuator up
-  Move the selected actuator down




 It is only compulsory to connect the actuators configured as DIMMER or PUL

For each Actuator you can define:








- Description
Actuator description
- Address
Actuator address
- Type
Define if the actuator is a 10-level or a 100-level Dimmer type.
- PUL
Define whether the actuator is configured in “PUL” mode (PUL configurator in the actuator “M” socket)
- Group 1...10
Define which group in the Automation system (defined by the configurator in the actuator “G” position) actuator belongs to. As a function of the type of device up to three groups can be defined. Up to 3 belonging groups may be defined among the 9 available on the system.

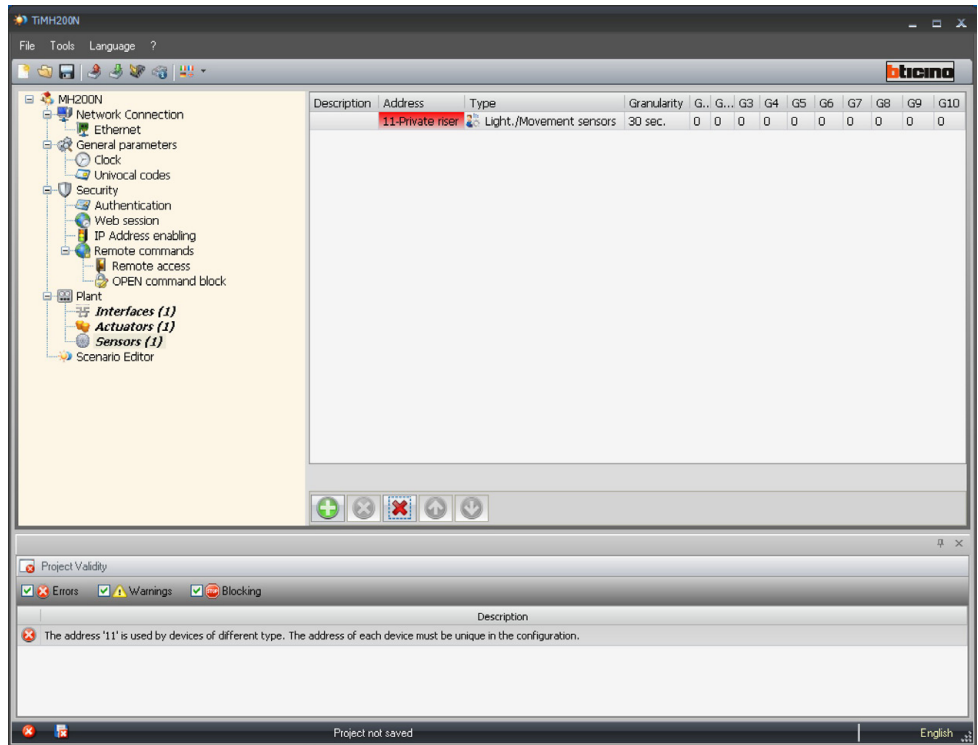
 The groups between 10 and 255 are dedicated to the Lighting Management systems.

5.4.3 Sensors (Lighting Management systems only)

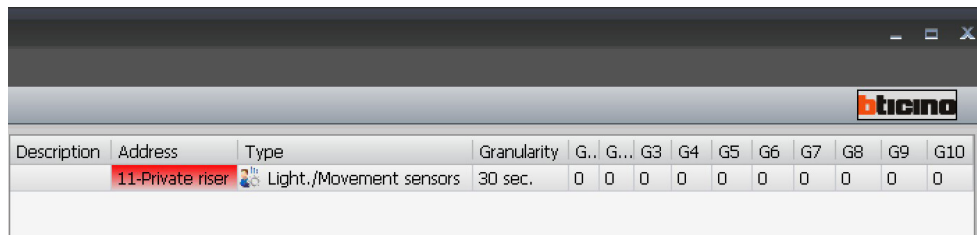
In this page, use the “Add” pushbutton to connect light/movement sensors. Each sensor must be configured by entering the address, the interface level, and the expansion interface address (if present).

The device address must be between A=0, PL=1, and A=10, PL=15.

-  Add a new sensor
-  Remove the selected sensor
-  Remove all sensors
-  Move the selected sensor up
-  Move the selected sensor down



For each Sensor, the user can define the following:



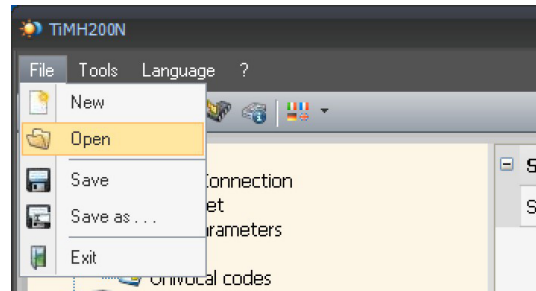
- Description
Sensor description
- Address
Sensor address
- Type
Indicate if the sensor is a “Light” or a “Movement” sensor
- Granularity
Select the granularity level
- Group 1...10
Define the sensor as belonging to one group of the Automation system (identified by the configurator in the “G” position of the sensor). Up to ten belonging groups may be defined among the 255 available on the system.

6. Open project

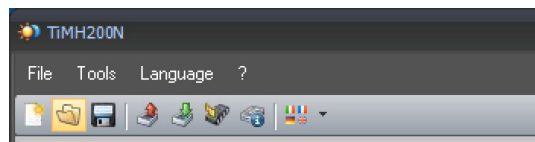
If the configuration file has been saved, this function can select it to edit it or download it to the Scenario programmer.

Open an existing project by:

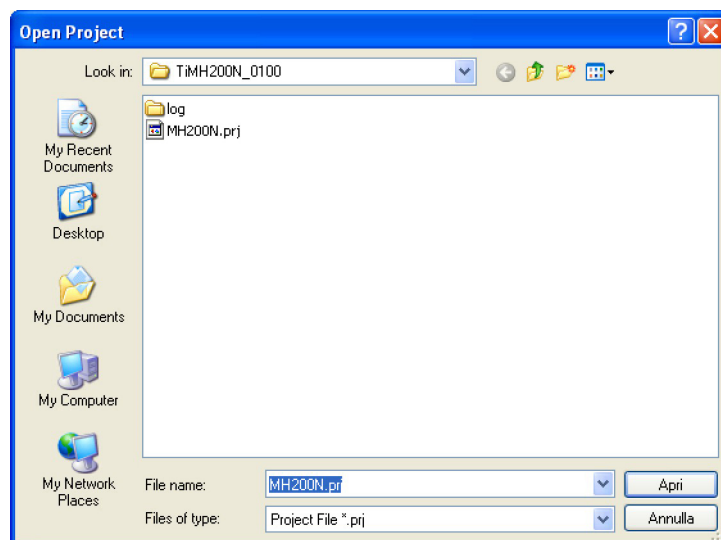
- **Open**
"File" pull-down menu;



- **Open**
Command bar



A mask is displayed to search for the folder containing the project file (.wwz) to be Opened.



Warning: For projects created using version 1 of the software, containing time and date objects, it is recommended to open the scenarios configurations, and reactivate all scenarios before sending the configuration to the MH200N Programmer.

On selecting "Open" the project is opened

7. Download and upload the project



Attention: make sure that the PC on which the TIMH200N program is installed and the Scenario programmer have compatible IP addresses.

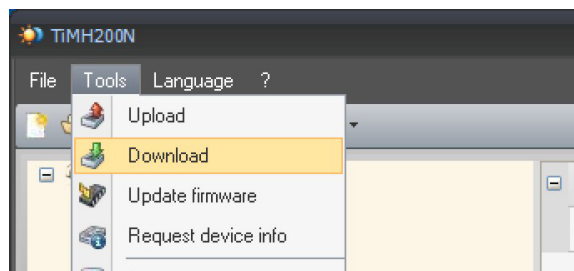
When the configuration of the project has been completed, the file must be saved in the job directory and then sent to the MH200N device (Download).

It is also possible to receive the configuration file from the device (Upload function) so as to perform checks and/or changes. In both cases it is necessary to connect the PC to the scenario programmer by using the serial cable, 335919 or 3559, connected to the serial port of the PC and to a specific connector, or a "crossover" cable connected to the LAN network connector of the scenario programmer and to the Ethernet network adapter of the PC; as an alternative, a remote update is possible, if you know the IP address and OPEN password.

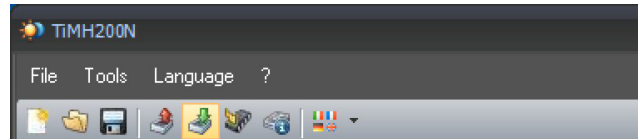
7.1 Download

Activate this operation by:

- **Download**
"Tools" pull-down menu

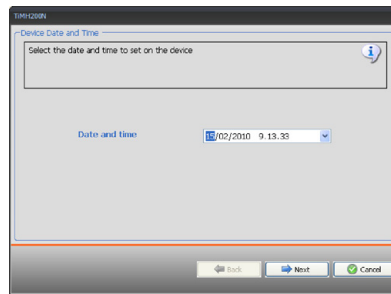


- **Download**
command bar

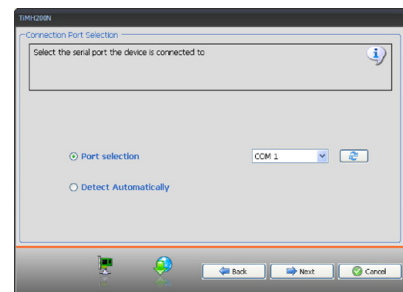
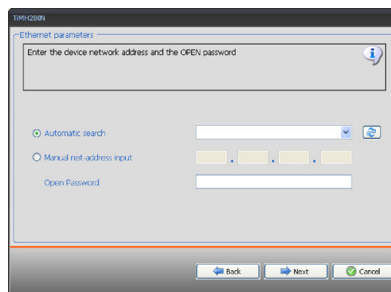
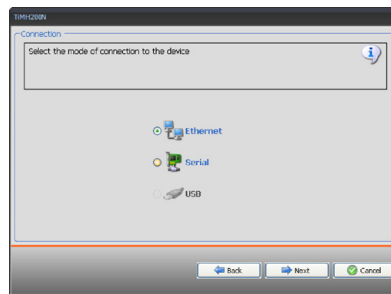


A mask is displayed to search for the folder containing the project file to be Opened for the Download.

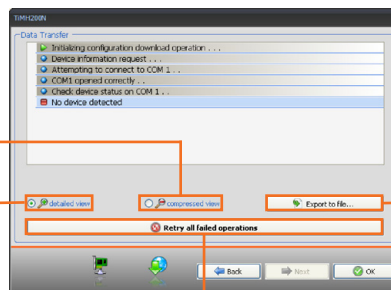
Select **“Download”** to display the mask used to set the Date and the Time.



Select **“Next”** to select the mode of connection between the Scenario Programmer (MH200N) and the PC.



Select **“Next”** to transfer the project to MH200N.



Hide the details of the current download
 Display the details of the current download

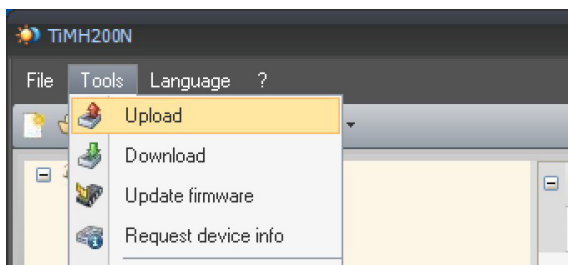
It exports the .log file

Repeat the operation of unsuccessful

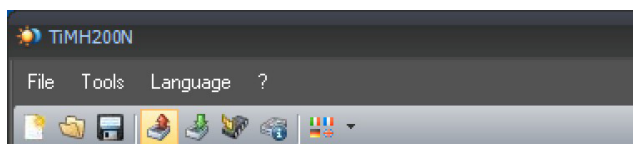
7.2 Upload

Activate this operation by:

- **Upload**
"Tools" pull-down menu



- **Upload**
command bar

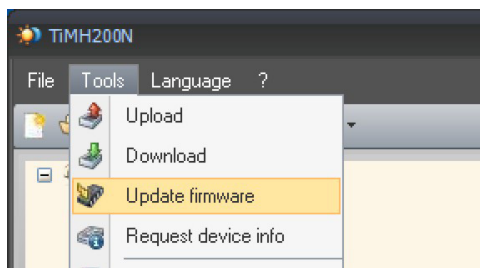


A mask is displayed, for the selection of the mode of connection to MH200N (for the connection procedures see paragraph 7.1).

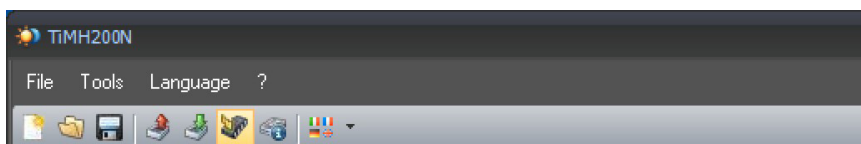
After selecting the connection mode click "**Next**" to load the currently installed project on the MH200N device.

8. Updating Firmware

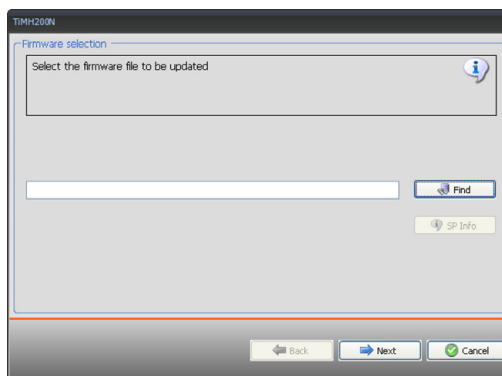
- Update firmware
“Tools” pull-down menu



- Update firmware
command bar



The following window is displayed to look for the folder containing Firmware files with **.fwz** extension (compressed file).



Select the file and click on **“Open”** to continue.

A mask is displayed, for the selection of the mode of connection to MH200N (for the connection procedures see paragraph 7.1).

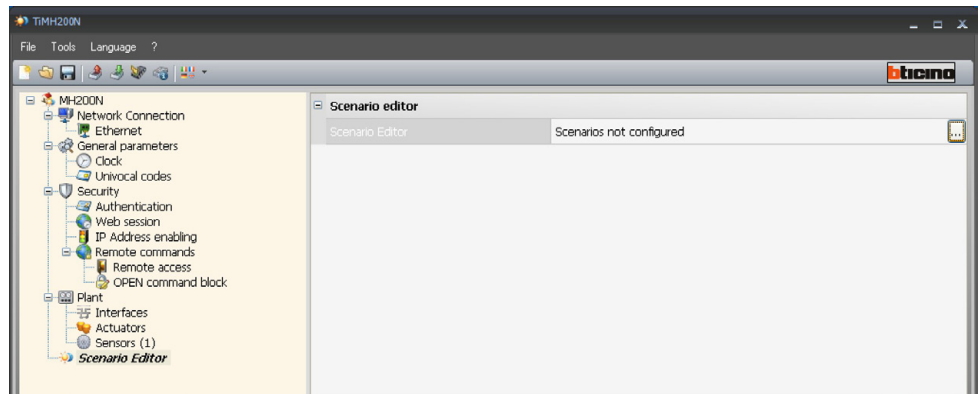
9. Scenario Editor

This chapter describes the operations required to create a Collection of Scenarios by means of the “Scenario Editor” application.

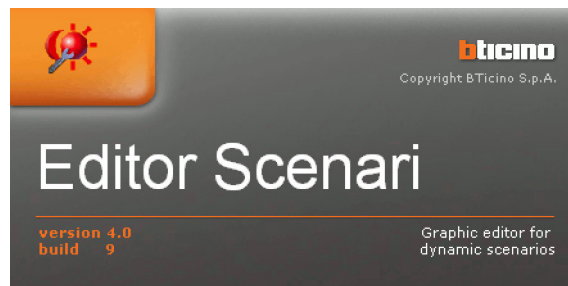
9.1 Creating and modifying a Collection

To create or modify a Collection, access section **Scenario Editor**.

Select “Setup” in the hierarchical structure on the left.



Click the “Scenario Configuration” pushbutton.

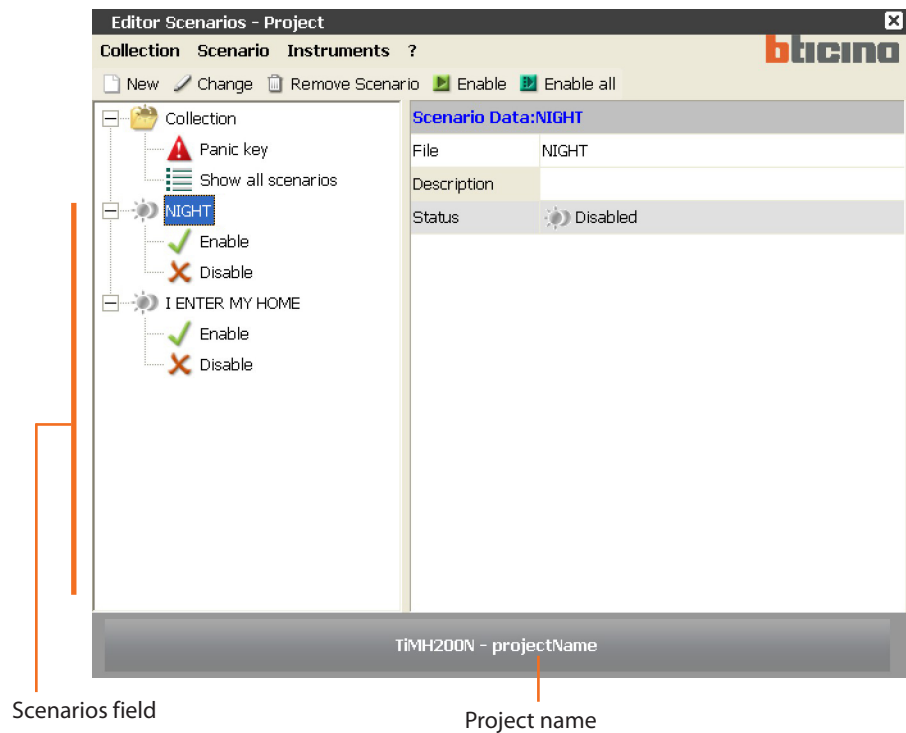


9.1.1 Main screen page and related menus

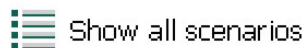
The main functions that can be carried out using the "Editor Scenarios" can be accessed selecting the relevant options in the drop down menu. Many functions can also be accessed by double clicking the relevant item.

For example: a scenario can be modified by double clicking on the line "File" on the scenario field line or by selecting "Change" from the "Scenario" drop down menu.

When Scenario Editor is accessed, the following screen page will be displayed:



Panic key The configuration of this function enables assigning a button of the Automation system the possibility of disabling all active scenarios in case of emergency.



Show all scenarios Shows the programmed scenarios and their status on the right of the screen.

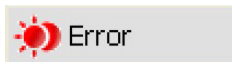
Scenarios status



Enabled MH200N is managing the scenario

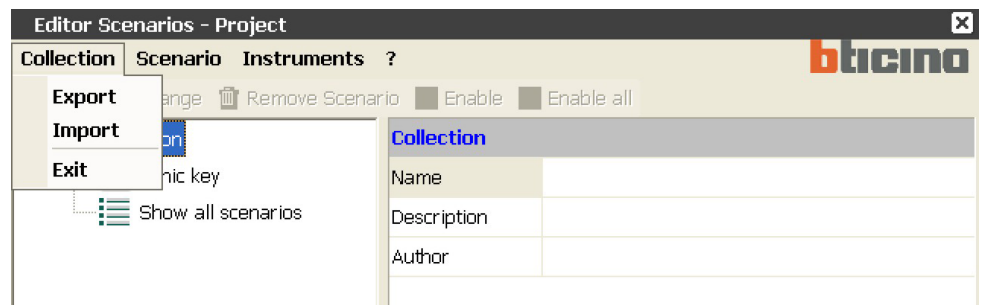


Disabled MH200N ignores the scenario



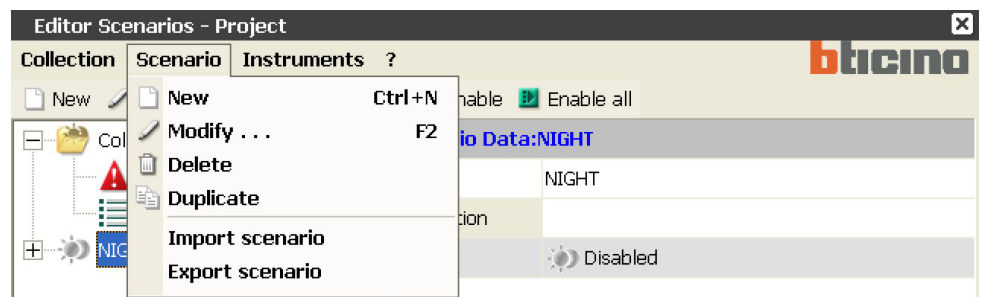
Error The scenario is not properly configured

“Collection” Menu



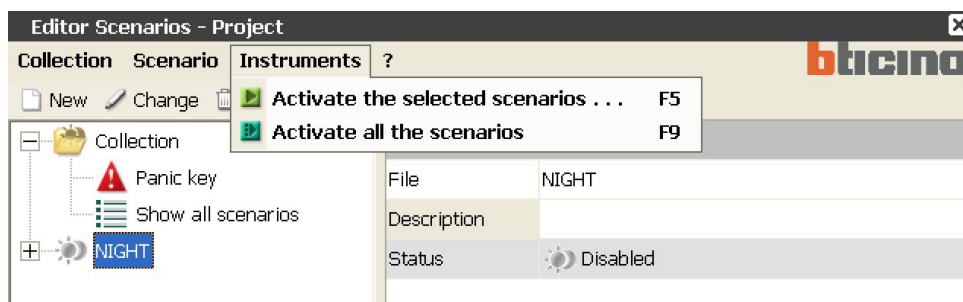
- **Export**
Exports the scenarios collection (.osj file), so that they can be used for other projects
- **Import**
it imports scenarios from an existing collection (file .osj).
- **Exit**
it exits section Scenario Editor and goes back to the TIMH200N programme.

“Scenario” Menu



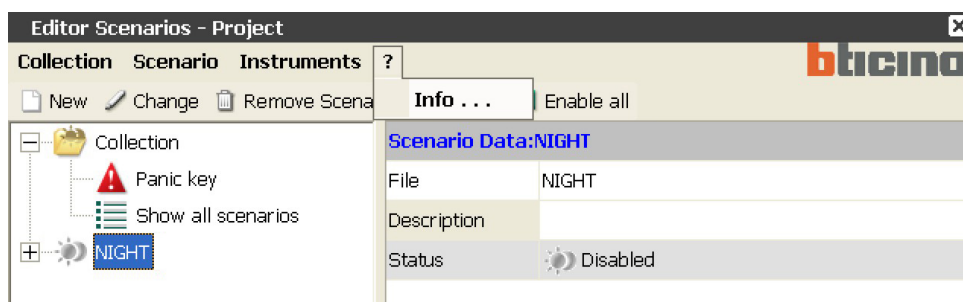
- **New**
it creates a new scenario.
- **Modifier**
it opens the window to modify the selected scenario or to configure a new one.
- **Delete**
it deletes the scenario selected among those included in the Scenarios field.
- **Duplicate**
Creates a copy of the selected scenario.
- **Import scenario**
it imports a scenario (file .osx).
- **Export scenario**
it exports a scenario (file .osx)

“Tools” Menu



- **Activate the selected scenarios**
it activates the scenarios selected among those included in the Scenarios field.
- **Activate all the scenarios**
it activates all the scenarios included in the Scenarios field

“?” Menu

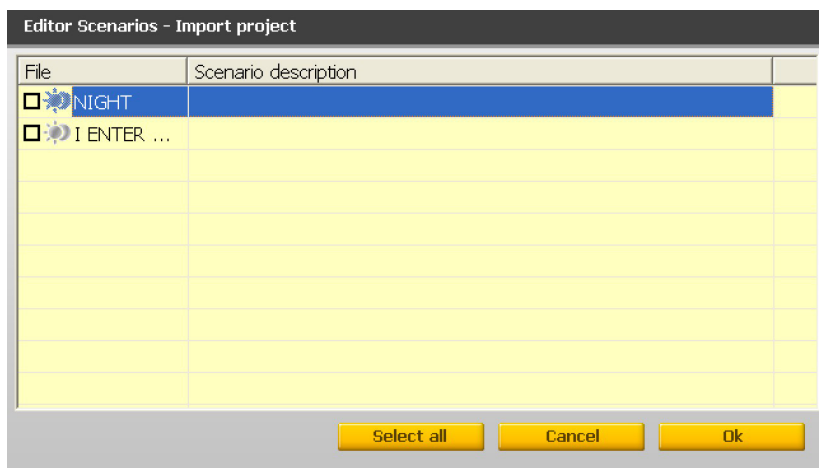


- **Info...**
it displays some information on the programme, such as the software version.

9.1.2 Importing scenarios from a Collection

Scenarios can be imported from another collection.

In the “Collection” menu, select “Import”, select the collection file from which you want to import a scenario; the following mask will be displayed:

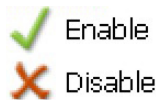
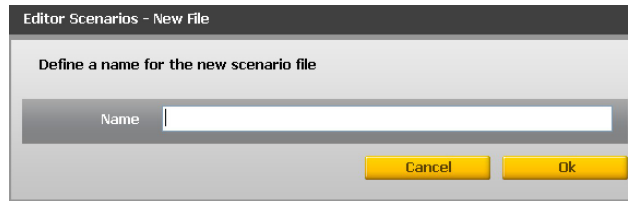


Tick the box left of the scenarios to be imported and click on Ok.

9.2 Creating and modifying a Scenario

To create a scenario, select “New” in the “Scenario” menu (main mask)

The following window will be displayed, where the name of the scenario can be entered.



Enable

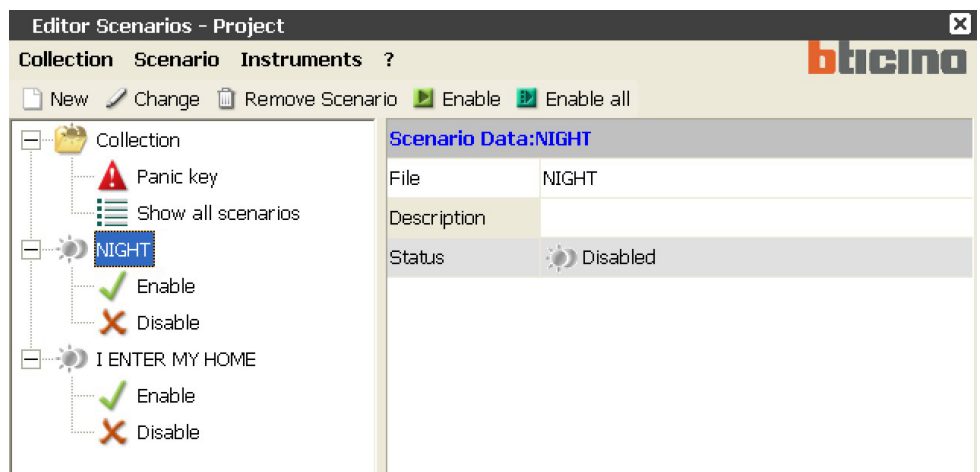
Disable

For each scenario, it is possible to configure two buttons of the Automation system, for manual activation or deactivation.

For example, if the scenario is set to activate the watering system from 8.00 to 10.00 pm every night, should one be having an outdoor dinner party, the watering scenario can be deactivated by pressing the button set for disabling the function.

To reactivate the function the Enable configured button will need to be pressed again.

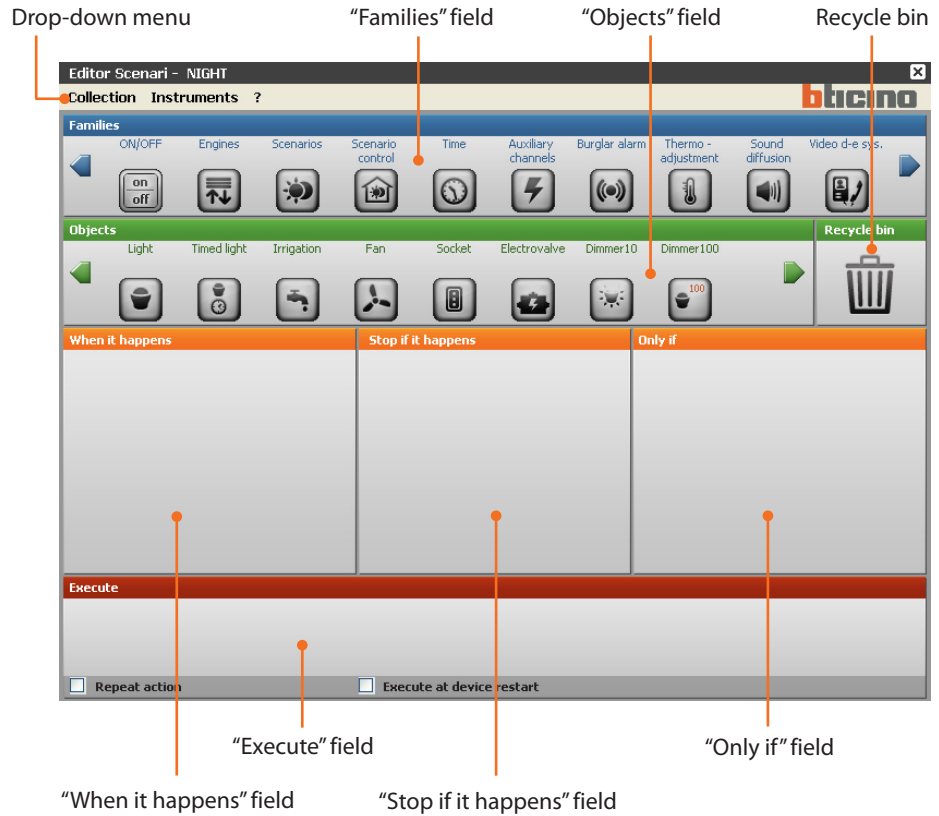
The controls used for these function must be configured using M=CEN.



To access the scenario configuration screen, select “Change” from the Scenario menu or double click on the “File” line.

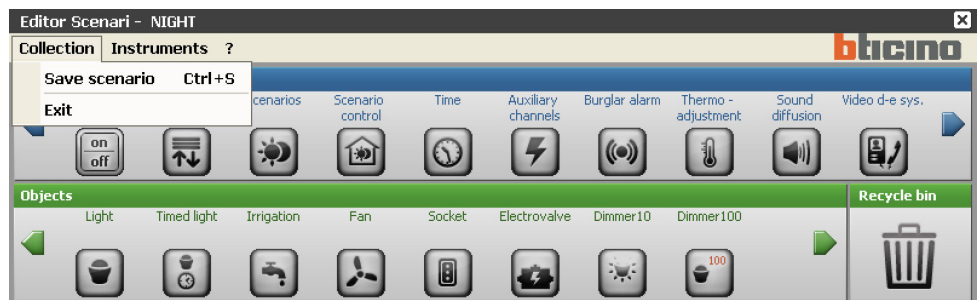
9.2.1 Main screen page and related menus

A scenario is configured through the following mask:



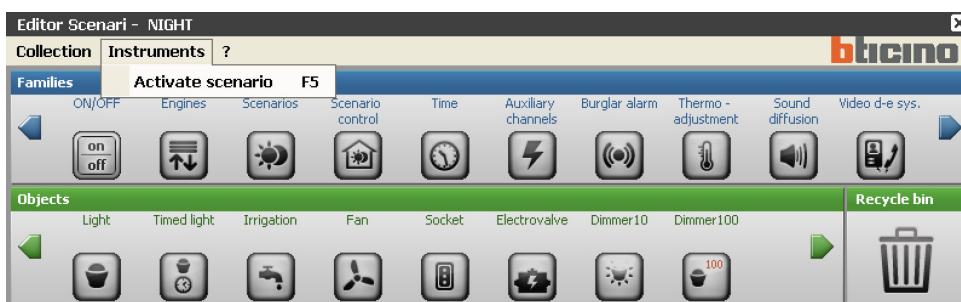
The drop-down menu includes the following functions:

“Collection” Menu



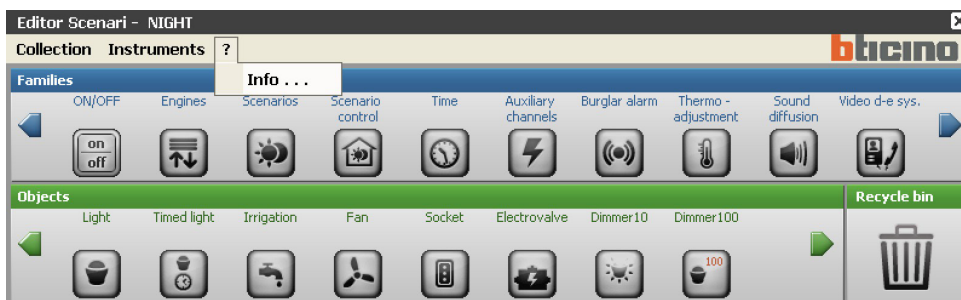
- **Save scenario**
it saves the current scenario
- **Esci**
it exits this section and goes back to the Scenario Editor main screen page

“Tools” Menu



- **Activate scenario**
it enables the current scenario

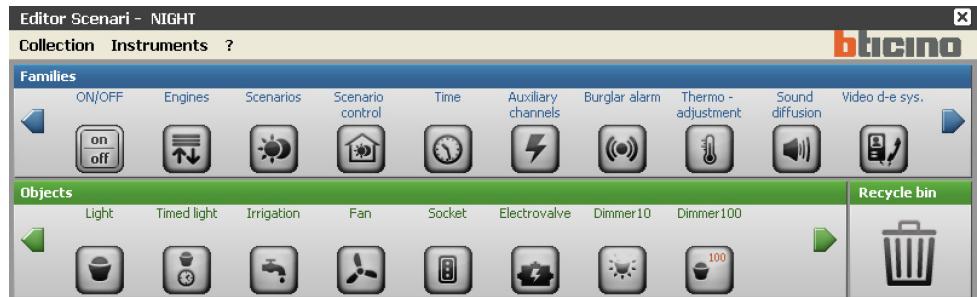
“?” Menu



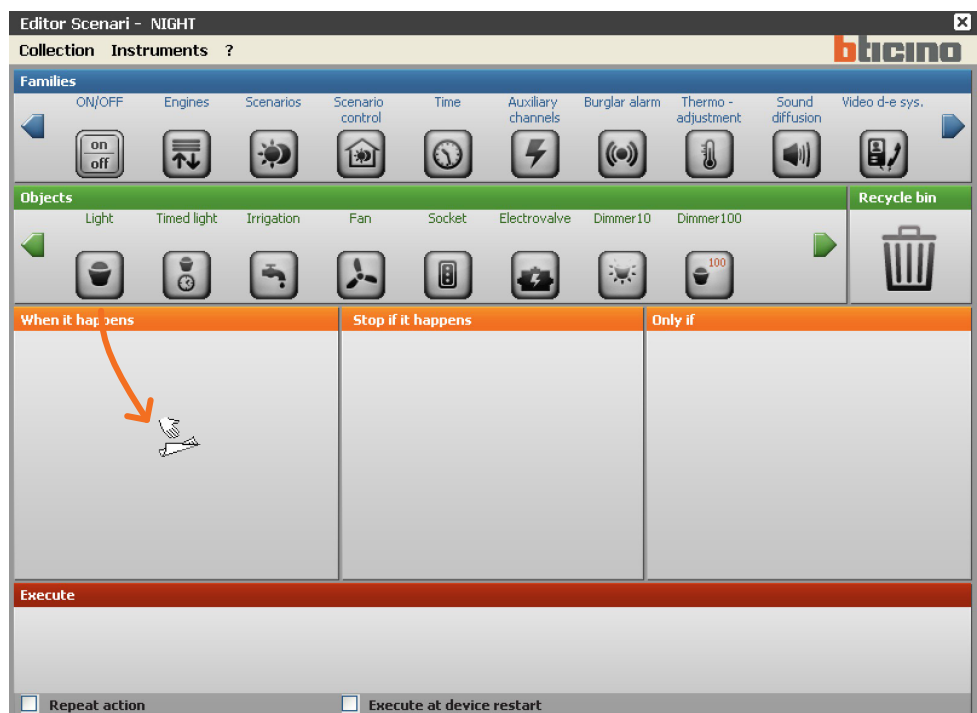
- **Info...**
it displays some information on the programme.

9.2.2 Configuring a scenario

The first two fields of the scenario screen page include some objects divided by My Home function.




To configure a scenario, drag the object icons to the various fields below using the “drag and drop” function.




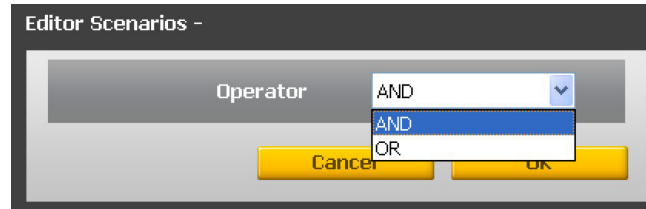
Depending on the field to which it is dragged, the object will take on a certain function, specifically:

- In the **“When it happens”** field, the object defines the event which will activate the scenario
- In the **“Stop if it happens”** field, the object defines the event which will stop the scenario
- In the **“Only if”** field, the object defines a constraint to scenario execution (such as a time span or a device’s state).
- In the **“Execute”** field, the object defines the action or sequence of actions to be carried out. This is the only mandatory field.

If an object is dragged to a non-relevant area, the mouse icon will take on this shape  to show that the operation is not valid.

The objects can be deleted by moving them to the **“Recycle bin”** field.

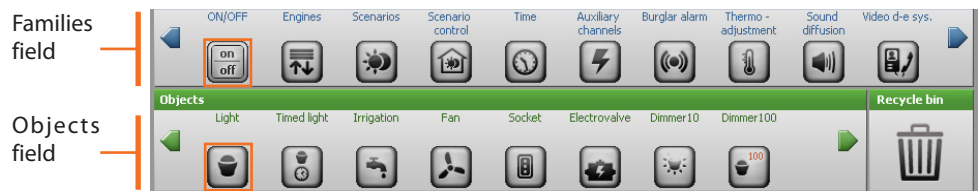
If two or more objects are entered in the “Only if” field, this icon  will appear between them. Double clicking on this icon will open a set up window for the link between the two objects: selecting “AND” both conditions defined by the objects must be verified in order to activate the scenario; selecting “OR”, only one condition needs verifying.



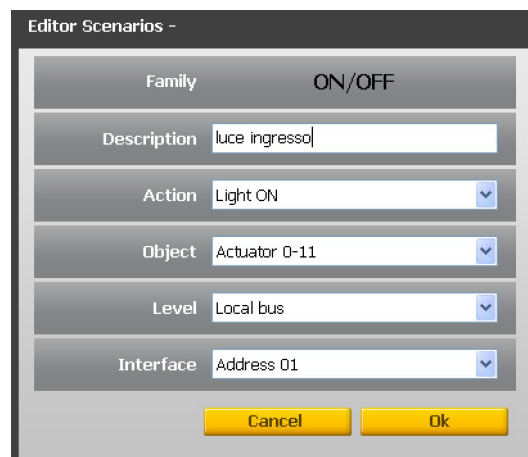
9.2.3 Families/Objects

The “Families” field includes the icons of My Home functions.

Clicking on the icon of a function (e.g.: ON/OFF), the Objects making up the Family selected are displayed in the “Objects” field.



Dragging the Object (e.g.: Lamp) by means of “drag and drop”, to the relevant Field (e.g.: when it happens), when the mouse button is released, a mask is opened for the configuration of the dragged Object.



The masks and the data required for the configuration may vary depending on the type of Object and the field to which the object is dragged. To configure the Object, select the data from the scroll-down menus in the configuration mask, press Ok to confirm.

The configured Object is displayed in the selected field with an icon showing its state or the function assigned to it.

The following pages show the Objects belonging to the individual My Home functions Families and the related configuration mask.



On/Off Family

This family includes objects which can have ON and OFF status. Click on the green arrows to show all objects.



Configuration mask for the following objects:
Light, Irrigation, Fan, Socket, Electrovalve, Dimmer10 and Assemblies

Editor Scenarios -

Family	ON/OFF
Description	luce ingresso
Action	Light ON
Object	Actuator 1-11
Level	Private riser
Interface	

Cancel
Ok

- Family to which the object belongs
- Object description
- Action
- Object (device address)
- System level
- Interface no. F422 address (if present)

The "Sets" object represents a set of actuators belonging to a specific Environment or Group or controlled by a General control.



Timed Light Object

Editor Scenarios -

Family	ON/OFF
Description	
Action	ON timed
Object	Actuator 0-1
Time within (hh:mm:ss)	0 0 1
Level	Private riser
Interface	

Cancel
Ok

- Family to which the object belongs
- Object description
- Action
- Object (device address)
- Light-on time settings
- System level
- Interface no. F422 address (if present)



Dimmer 100 and Dimmer100 assembly Objects

Editor Scenarios -

Family	ON/OFF
Description	<input type="text"/>
Action	Dimmer OFF
Object	Actuator 0-1
Lighting	<input type="text"/>
Time within (mm:ss max 4 min.)	0 1
Level	Private riser
Interface	<input type="text"/>

Cancel Ok

- Family to which the object belongs
- Object description
- Action
- Object (device address)
- Light level setting
- Action Time (100% on)
- System level
- Interface no. F422 address (if present)



Motors Family

This family includes all the objects which may have UP and DOWN or OPEN and CLOSE states.



Configuration mask for the Motor rolling gate object

Editor Scenarios -

Family	Engines
Description	<input type="text"/>
Action	Rolling gate STOP
Object	Actuator 0-1
Level	Private riser
Interface	<input type="text"/>

Cancel Ok

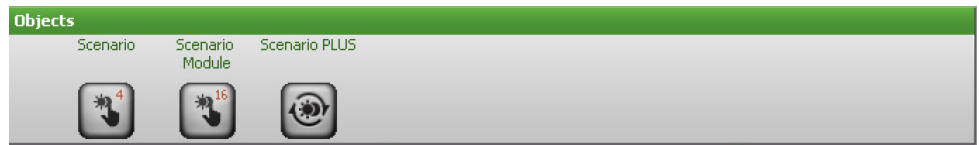
- Family to which the object belongs
- Object description
- Action
- Object (device address)
- System level
- Interface no. F422 address

The "Sets" object represents a set of actuators belonging to a specific Environment or Group or controlled by a General control.



Scenarios Family

This family identifies an object capable of generating scenarios.



Configuration mask for the Scenario object

Editor Scenarios -

Family	Scenarios
Description	<input type="text"/>
Action	Scenario 1
Object	Control unit 01
Level	Private riser
Interface	<input type="text"/>

Cancel Ok

- Family to which the object belongs
- Object description
- Action (numero dello scenario da attivare)
- Object
- System level
- Interface no. F422 address



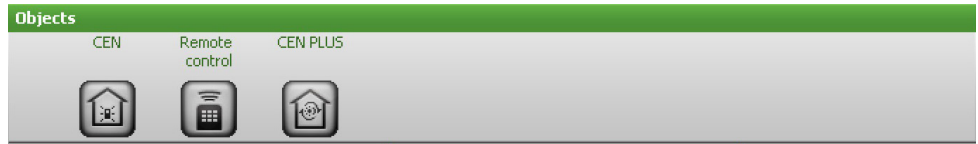
Scenario PLUS object (for Lighting Management systems)



Scenario Control Family

This family includes the control configured in the CEN mode.

Warning: When configuring this family assigning the addresses 10, 20, 30, 40 etc. to the object field is not recommended.



Configuration mask for the CEN object

Family to which the object belongs

Object description

Objects (control no.)

System level

Interface no. F422 address

Based on the control pressure mode, the following actions are available:

- Start pressure
- Release after extended press.
- Extended pressure
- Start pressure
- Release after short press.



CEN PLUS object

If the object is dropped into the "When this happens" or "Stop when this happens" fields, the following mask will open, where it will be possible to configure the CEN PLUS object.

Family the object belongs to

Object description

Objects (control no.)

Pushbutton (number of the pushbutton to activate)

Based on the control pressure mode, the following actions are available:

- Short pressure and release
- Start of extended pressure
- Extended pressure
- Release after extended pressure



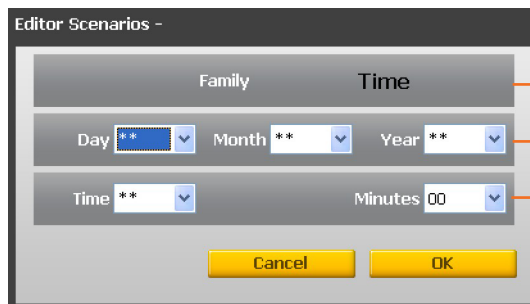
Time Family

This family includes the objects allowing to specify a time span. The configuration masks for the objects belonging to this family vary depending on the Object selected and the field where it is located.



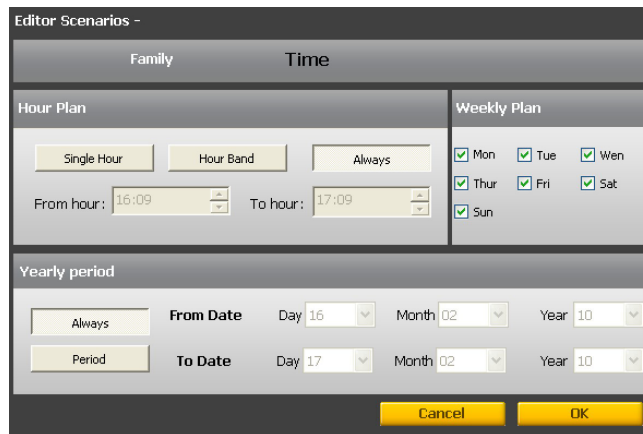
Hour and Day Object

If the object is dragged to the “When it happens” or “Stop if it happens” fields, the following mask will appear, where the hour and date when the scenario should start can be configured.



Family to which the object belongs
 Event date
 Event hour

If the object is dragged to the “Only if” field, the following configuration mask is proposed, divided into three separate areas, where a time span within which the scenario is executed can be defined.



Hour Plan

Single hour: by clicking on this button the “From hour” field is enabled, where the precise hour and minute when the scenario should be operating can be specified.

Hour band: by clicking on this button the “From hour” and “To Hour” fields are enabled, where an hour band when the scenario should be operating can be specified.

Always: by clicking on this button the “From hour” and “To hour” fields are disabled. The time plan covers the 24hours.

Weekly Plan

In this area the days of the week when the scenario should be operating can be selected.

Yearly Period

Period: by clicking on this button the “From Date” and “To Date” fields are enabled, where the validity period of the scenario can be specified.

Always: by clicking on this button the “From Date” and “To Date” fields are disabled. In this case the scenario will always be active.



Hour Object

If the object is dragged to the “When it happens” or “Stop if it happens” fields, the following mask will appear, where the hour when the scenario should start can be set.

- Family to which the object belongs
- Object description
- Event hour



Delay Object

This object specifies a waiting time before a new operation is executed; it can only be dragged to the “Execute” field.

- Family to which the object belongs
- Object description
- Seconds, minutes or hours selection
- Enter the delay figure value



Random Delay Object

This object specifies a delay before the execution of a new action; it can only be dragged in the “Execute” field. Enter a minimum and maximum delay. The programmer will select a delay within the set limit.

- Family to which the object belongs
- Object description
- Seconds, minutes or hours selection
- Enter the minimum and maximum delay.



Astronomic clock object

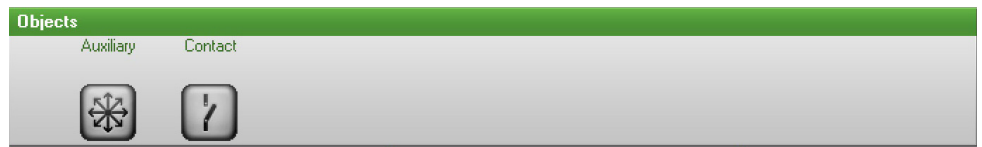
This Object specifies a time condition (Sunrise, Sunset, Day, or Night) to which the execution of a new scenario is linked to. It can only be dropped into the "When it happens", "Stop if it happens", "Only if" fields.

- Family the Object belongs to
- Object description
- Action (Select the status of the astronomical clock)



Auxiliary Channels Family

This family identifies an object consisting of the ON and OFF control managed on one of the 9 auxiliary channels



Mask for the configuration of the Auxiliary object

- Family to which the object belongs
- Object description
- Action
- Object (Auxiliary channel)



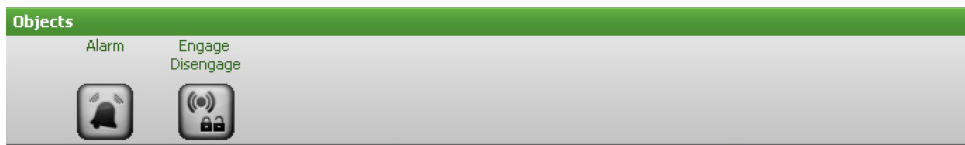
Contact object

- Family the object belongs to
- Object description
- Action (opening-OFF/closing-ON)
- Object (object identification number)



Burglar alarm Family

This family enables activating a scenario for responding to an alarm event. The event type and the area can be specified.



Mask for the configuration of the Alarm object

Editor Scenarios -

Family	Burglar alarm
Description	<input type="text"/>
Action	Burglar alarm
Object	Zone 1

Cancel Ok

- Family to which the object belongs
- Object description
- Action (Allarm event)
- Object (Zone)



Engage/Disengage object

When a new action is performed, with this object it is possible to engage/disengage the burglar alarm system.

Editor Scenarios -

Family	Burglar alarm
Description	<input type="text"/>
Action	Engage

Cancel Ok

- Family the object belongs to
- Object description
- Action (Engage/Disengage)



Temperature regulation Family

This family includes objects connected with the Temperature regulation system. The configuration masks will change depending on the object selected.



99 Zone Unit Object

At the occurring of certain conditions, with this object it will be possible to switch the 99 zone central unit of the temperature control system to the mode set in the Action field; it can only be dropped in the "Execute" field.

Editor Scenarios -

Family Thermo - adjustment

Description

Action Antifreeze/thermal protection

Temperature 18,0°C

Cancel Ok

- Family to which the object belongs
- Object description
- Action
- Temperature (it's activated by setting the "Action" field to "Manual")



99 Zone Scenario Object

This Object enables activation of one of the scenarios programmed on the 99 zone Central unit; It can only be dropped in the "Execute" field.

Editor Scenarios -

Family Thermo - adjustment

Description

Action Heating scenario 1

Cancel Ok

- Family to which the object belongs
- Object description
- Action (Scenario)



99 Zone Program Object

This Object enables activation of one of the programs saved on the 99 zone Central unit; It can only be dropped in the "Execute" field.

Editor Scenarios -

Family Thermo - adjustment

Description

Action Heating program 1

Cancel Ok

- Family to which the object belongs
- Object description
- Action (Program set on the 99 zone Central unit)



Zone object - 99 zones

If the object is dragged in the “When this happens” or “Stop when this happens” fields, the following mask will open, to help the user defining the conditions of the zone that will activate the scenario. If dragged in the “Execute” field, it enables, when certain events occur, switching of a certain part of the temperature regulation system to the mode set in the Action field. It cannot be dragged in the “Only if” field.

- Family to which the object belongs
- Object description
- Action
- Object (Zone 1 ÷99)
- Temperature (it's activated by setting the “Action” field to “Manual”)



4 Zone Unit Object

At the occurring of certain conditions, with this object it will be possible to switch the 4 zone central unit of the temperature control system to the mode set in the Action field; It can only be dropped in the “Execute” field.

- Family the object belongs to
- Object description
- Action
- Object (Zone 1 to 99)
- Temperature (it is activated by setting the “Action” field to “Manual”).
- Time (it is activated by setting the “Action” field to “Manual”).



4 Zone Program Object

This Object enables activation of one of the programs saved on the 99 zone Central unit; It can only be dropped in the “Execute” field.

- Family the object belongs to
- Object description
- Action (Program)
- Action (Program set on the 4 zone Central unit)



Probe object

This object enables to link the activation of the scenario to the temperature level measured by a probe. It can only be dragged in the "Only if" field.

The screenshot shows the 'Editor Scenarios' dialog box with the following fields and values:

- Family: Thermo - adjustment
- Description: (empty text box)
- Action: Temperature measured
- Object: Zone 1
- Probe: Master Probe
- If T measured: >= 18,0°C

Annotations on the right side of the dialog box:

- Family to which the object belongs
- Object description
- Action
- Object (Zone 1 ÷ 99)
- Probe (Specific probe within the zone)
- Setting the temperature level that will activate the scenario.



External Probe Object

This object enables to link the activation of the scenario to the temperature level measured by a specified external probe. It can only be dropped into the "Only if" field.

The screenshot shows the 'Editor Scenarios' dialog box with the following fields and values:

- Family: Thermo - adjustment
- Description: (empty text box)
- Action: Measured temperature
- Object: Probe 1
- If T measured: >= 18,0°C

Annotations on the right side of the dialog box:

- Family the object belongs to
- Object description
- Action
- Object (it specifies the number of the probe to associate, 1 to 9)
- Setting of the temperature level that will activate the scenario.



Sound system family

This family includes objects connected with the Sound system. With the exception of the “Amplifier” object, which can be dragged in all entry fields, all other fields can only be dragged in the “Execute” field. The “MC Radio Source” and the “MC Aux Source” can only be used if the system includes a “Multi Channel Matrix”.

Warning: When using the volume or source activation controls, ensure that an amplifier switch on control has also been activated.



Configuration mask for the Amplifier object

Editor Scenarios -

Family: Sound diffusion

Description:

Action: Amplifier OFF

Object: Amplifier 01

Buttons: Cancel, Ok

- Family to which the object belongs
- Object description
- Action
- Object address



Power amplifier object

This object enables to link the activation of the scenario to the power amplifier parameters; in the “Only if” and “Execute” fields, in addition to the simple switch on/off functions, it also enables setting the volume level and the enabling or disabling of the equalizer parameters.

Editor Scenarios -

Family: Sound diffusion

Description:

Action: ON

Object: Amplifier 01

Buttons: Cancel, Ok

- Family the object belongs to
- Object description
- Action
- Object address

Editor Scenarios -

Family: Sound diffusion

Description:

Action: ON

Object: Amplifier 01

Variable parameters based on the selected function

Buttons: Cancel, Ok

- Family the object belongs to
- Object description
- Action
- Object address
- Variable parameters based on the selected function



Video door entry family

This family includes objects connected with the Video door entry system. The objects “staircase light”, “Door lock” and “Answering Machine” can only be dragged in the “Execute field. The “Camera” object cannot be dragged in the “Only if” field, while the “Audio handset” object can be dragged in the fields “When this happens” and “Stop if this happens”.



Configuration mask for the following objects:
Door lock and Camera

! Warning: When setting an ON command, ensure that the related OFF command is also set within the same scenario. If no delay has been set for the Staircase Light activation actuator, enter a time delay between the On and the OFF command.

Editor Scenarios -

Family	Video d-e sys.
Description	<input type="text"/>
Action	Open door lock v
Object	Entrance panel 00 v
Level	Private riser v

Cancel
Ok

- Family to which the object belongs
- Object description
- Action
- Object (device address)
- System level



Configuration mask for the following objects:
Staircase light from EP and Staircase light from IP

Editor Scenarios -

Family: Video d-e sys.

Description:

Action: Staircase light OFF

From object: Entrance panel 00

Buttons: Cancel, Ok

Object description

Action

Object (E.P. or I.P. address)



Configuration mask for the following objects:
Answering machine and Audio handset

Editor Scenarios -

Family: Video d-e sys.

Description:

Action: Disable answering machine

Object: Auxiliary 1

Buttons: Cancel, Ok

Family to which the object belongs

Object description

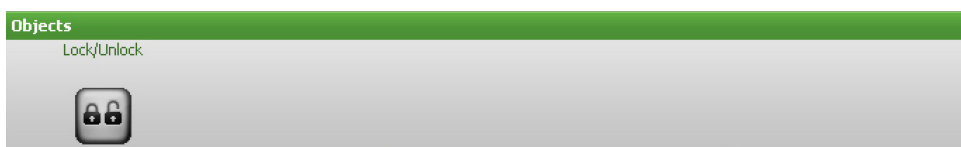
Action

Object (device address)



Special Controls Family

This family enables entering the Lock/Unlock object in the Execute field. The action of this object refers to a certain actuator in the system, which can be locked in the current state. To reinstate normal operation of the actuator, a similar unlock command must be sent to the MH200N Scenario Programmer.



Lock/Unlock Object

Editor Scenarios -

Family: Special controls

Description:

Action: Lock

Object: Actuator 0-1

Level: Private riser

Interface:

Buttons: Cancel, Ok

Family to which the object belongs

Object description

Action

Object (actuator address)

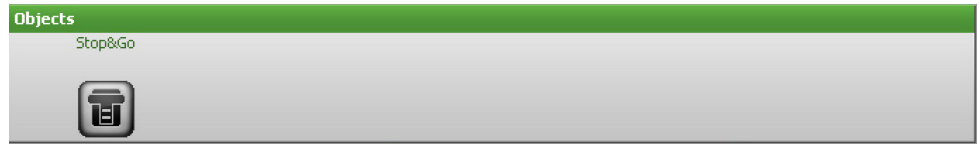
System level

Interface no. F422 address



Systems supervision Family

This family can be used to manage the opening/closing, and the automatic resetting of Stop&Go objects.



Mask for the configuration of the Stop&Go object

Family	Supervision system
Description	
Action	Open
Object	Device 1

Family the object belongs to

Object description

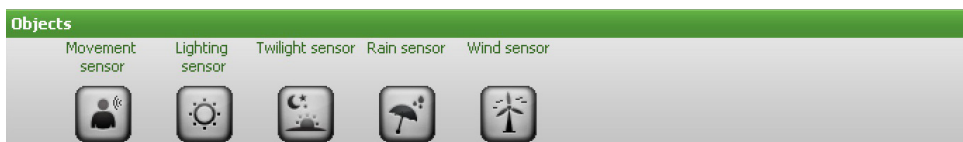
Action

Object
(device identification number)



Sensor Family

This family can be used to perform scenarios based on the status of some types of sensors; movement, lighting, twilight, rain, wind sensors.



Movement sensor object

Editor Scenarios -

Family	Sensors
Description	<input type="text"/>
Action	Motion
Object	Sensor 0-1
Level	Private riser
Interface	<input type="text"/>

Cancel Ok

- Family the object belongs to
- Object description
- Action
- Object (sensor SCS address)
- Level (private riser or local bus)
- F422 interface address



Lighting sensor object

Editor Scenarios -

Family	Sensors
Description	<input type="text"/>
Action	Measured lux
Object	Sensor 0-1
If level	>=
Lux	0
Level	Private riser
Interface	<input type="text"/>

Cancel Ok

- Family the object belongs to
- Object description
- Action
- Object (sensor SCS address)
- Light level
- Level (private riser or local bus)
- F422 interface address



Twilight sensor object

Editor Scenarios -

Family	Sensors
Description	<input type="text"/>
Action	Sunset
Object	Sensor 0-1
Level	Private riser
Interface	<input type="text"/>

Cancel Ok

- Family the object belongs to
- Object description
- Action
- Object (SCS address of the interface the sensor is connected to)
- Level (private riser or local bus)
- F422 interface address



Rain sensor object

Editor Scenarios -

Family	Sensors
Description	<input type="text"/>
Action	No rain
Object	Sensor 0-1
Level	Private riser
Interface	<input type="text"/>

Cancel Ok

- Family the object belongs to
- Object description
- Action
- Object (SCS address of the interface the sensor is connected to)
- Level (private riser or local bus)
- F422 interface address



Wind sensor object

Editor Scenarios -

Family	Sensors
Description	<input type="text"/>
Action	Wind
Object	Sensor 0-1
Level	Private riser
Interface	<input type="text"/>

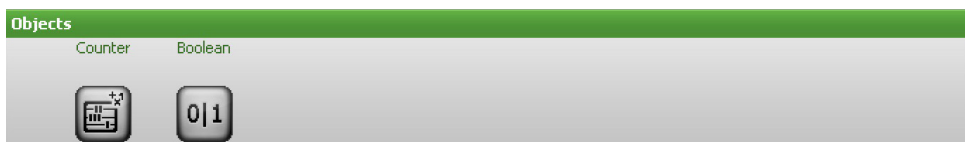
Cancel Ok

- Family the object belongs to
- Object description
- Action
- Object (SCS address of the interface the sensor is connected to)
- Level (private riser or local bus)
- F422 interface address



Variable Family

This family can be used to perform scenarios based on the status of two types of logic variables: a counter and a Boolean variable.



Counter object

Editor Scenarios -

Family	Variables
Description	<input type="text"/>
Action	Variable value <input type="button" value="v"/>
Object	Counter 1 <input type="button" value="v"/>
If value	>= <input type="button" value="v"/>
Value	0 <input type="text"/>

Cancel Ok

- Family the object belongs to
- Object description
- Action
- Object (identification number of the counter on the system)
- Condition on the value of the counter



Boolean object

Editor Scenarios -

Family	Variables
Description	<input type="text"/>
Action	True <input type="button" value="v"/>
Object	Boolean 1 <input type="button" value="v"/>

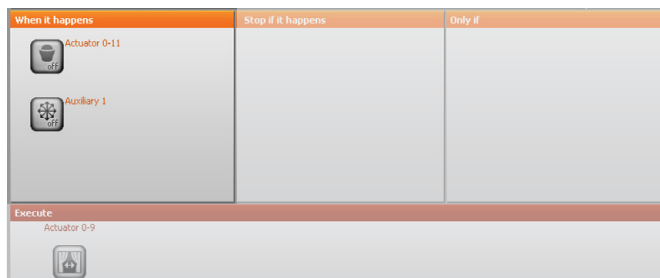
Cancel Ok

- Family the object belongs to
- Object description
- Boolean variable value (true or false)
- Object (identification number of the variable on the system)

9.2.4 Entry fields

When it happens

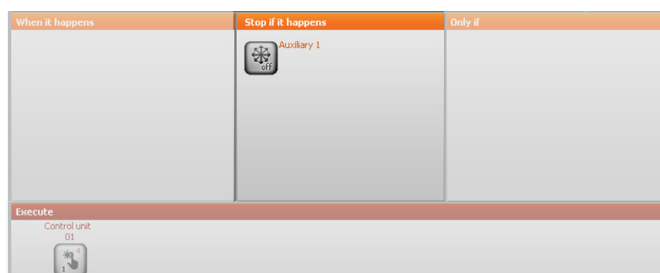
In this field **the event which will activate the scenario can be defined**. Several events can be entered, in this case they will be linked to one another by a logic OR, i.e. the scenario will be activated if one or the other event occurs



E.g.: scenario activated by a lamp being switched on or when an event managed by an auxiliary channel occurs.

Stop if it happens

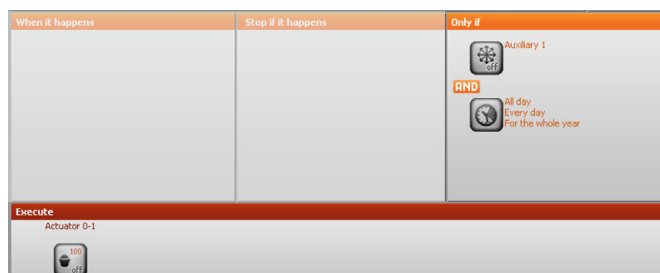
In this field **the event which will stop the scenario can be defined**. Just like in the previous field, in the case of several events, these will be linked to one another by a logic OR, i.e. the scenario will be blocked by an event or by another.




E.g.: scenario blocked by the disabling (OFF) of a device generating information on an auxiliary channel.

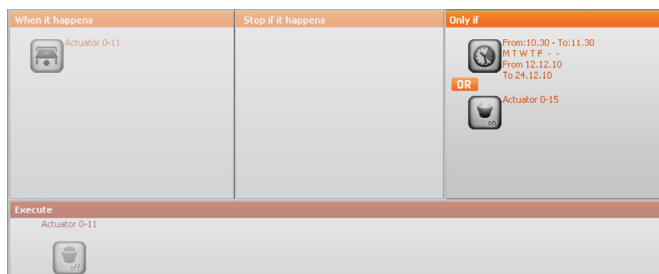
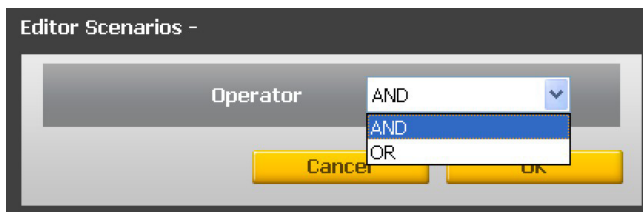
Only if

In this field **one or more events which will influence scenario execution can be defined**. The scenario will be executed only if the events included in this field have occurred. In case of several events, these will have to be linked to one another by means of the "OR" and "AND" logic operators.



Operators OR - AND

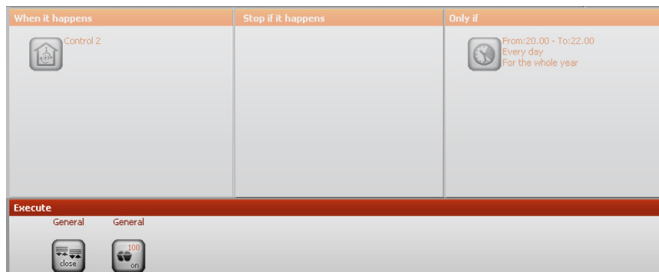
If two or more objects are entered in the “Only if” (Solo se) field, this icon  will appear between them. Double clicking on this icon will open a set up window for the link between the two objects: selecting “AND” both conditions defined by the objects must be verified in order to activate the scenario; selecting “OR”, only one condition needs verifying.



For example: The scenario will be executed 10.30 to 11.30, Monday to Friday in the period between 12.12.06 to 24.12.06, or (condition of **OR**) when the entrance lamp (Actuator 15) is on.

Execute

In this field the operations **that the scenario carries out** once it has been activated are defined. The scenario will carry out the operations in the order in which they have been entered in the field.



For example: The execution of the scenario will activate an instruction (General ON) to all actuators belonging to the ON/OFF family and an instruction (General OFF) to all actuators of the Motors Family.

Repeat Action

Tick this box for continuous loop operation. Once all the actions of the "Execute" field have been completed, the cycle will start again.



When this function is enabled, an endless cycle of actions is activated, therefore it is important to be very careful in defining the STOP events used to stop the scenario and/or in configuring well-defined time spans.

Repeat action Execute at device restart

For example: Completion of the following scenario lasting 10 minutes, in the period between 8.00 p.m and 10.00 p.m.: watering of the garden + opening of the ground floor roller blinds + closing of the first floor roller blinds and switching on the lights in the garden. If the "Repeat Action" box is not ticked, the sequence of actions listed in the "Execute" field will only be completed once. By ticking the box, the sequence is repeated every 10 minutes in the period between 8.00 p.m. and 10.00 p.m. This function can be used to simulate the presence of a person in the house without the need for creating complex scenarios lasting several hours.

Execute at device restart

Tick this box if, should Programmer MH200N switch off due to a power supply failure to the system, you want the scenario being executed at that time to continue when the device is restarted.


Repeat action Execute at device restart

For example, for the presence simulation scenario previously described, this box should be ticked too, so that, in the event of a power supply failure to the system, when the system is restarted, the scenario will continue operating.

10. Maximum number of scenarios and events managed by MH200N

When configuring the scenarios, bear the follow constraints in mind:

Collection	
Maximum number of scenarios	up to 300
Among the 300 maximum scenarios, there can be up to 20 scenarios with the following characteristics: - "Repeat Actions" flag active or - sum of delays exceeding 1 minute or - both	up to 20
Maximum number of scenarios with the same start event	up to 5

 MH200N can receive configuration files of 900 kB maximum; check the object size before performing the download



Scenario	
Maximum number of objects in the "When it happens" field	up to 20
Maximum number of objects in the "Stop if it happens" field	up to 20
Maximum number of objects in the "Only if" field	up to 20
Maximum number of scenario Actions	up to 40



BTicino SpA

Via Messina, 38
20154 Milano - Italy
www.bticino.com