



Living Now with Netatmo

Installation Manual

bticino



Contents

General features	4
Install Living Now with Netatmo	5
Associate the connected devices	9
Add a connected device	15
Add a wireless scenario control	17
Associate a wireless light/rolling shutter control to one or more modular connected devices	20
Dissociate a wireless control from the connected devices	26
Reset to the factory settings	26
Use the App	28



General features

The Gateway allows you to create your Smart electric system by associating together all the connected devices of the Living Light with Netatmo range and light relays.

Supplied as standard is also the wireless master IN&OUT scenario control, item L/N/NT4570CW, required for the association of all the connected devices and for the activation of the "IN" and "OUT" scenarios.

The Gateway connects to your home router through the Wi-Fi connection (2.4GHz only), to allow the local or remote control of lights, controlled sockets and rolling shutters using the smartphone ("Home + Control" App) or voice commands (using a voice assistant).

In order to optimize signal reception, it is recommended that the Gateway is installed close to the router.

Note: not all the products shown in this manual are available for all markets.

Check the availability of the same from your supplier or installer.

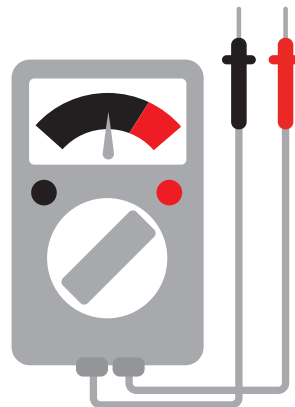
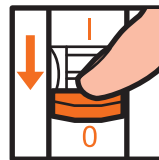
Gateway			
	K4500C	KG/KW/KM4501C	KG/KW/KM4502C
Connected socket			
	K4531C	KG/KW/KM4141C	KG/KW/KM4142C
Connected light switch/ light relay			
	K4003C	K4411CM2	3584C
Shutters			
	K4027C	K4027CM2	
Radio controls			
	K4003CW	K4003DCW	K4570CW
	K4027CW	3577C	K4574CW



Install Living Now with Netatmo

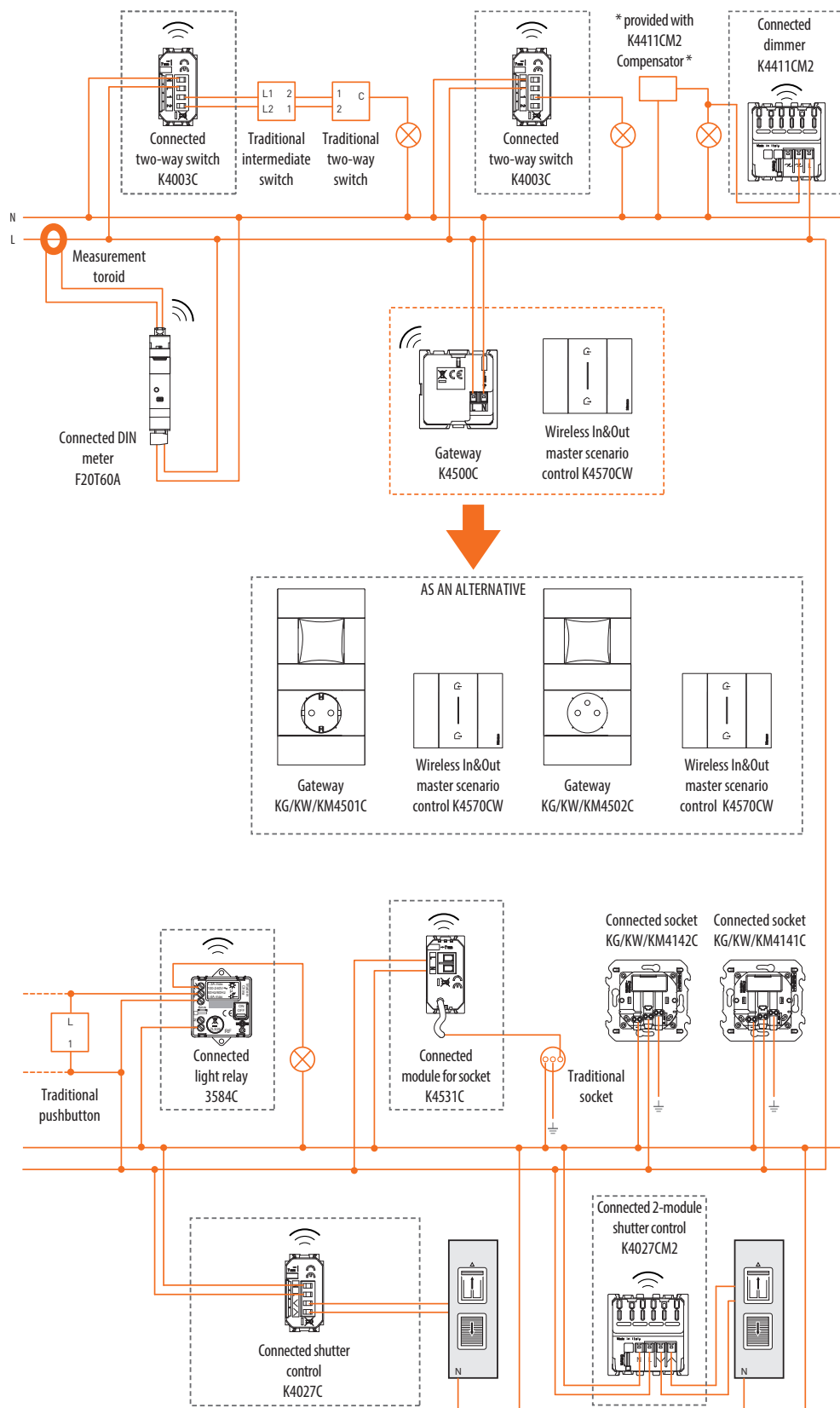


1. Disconnect the voltage from the general switch.



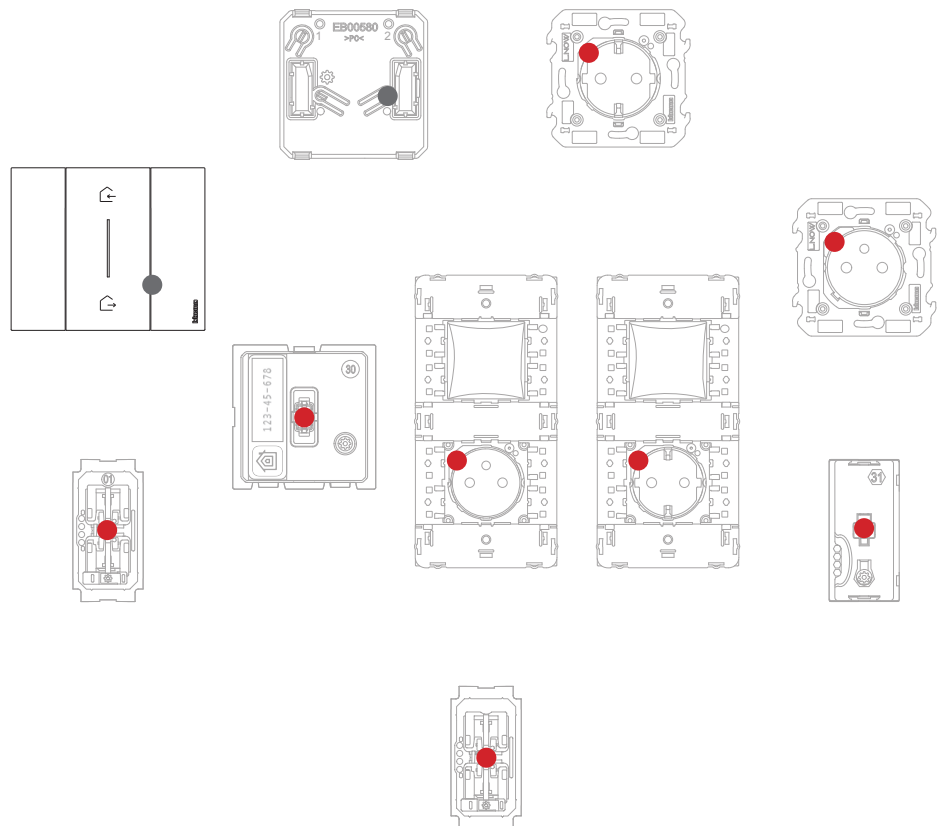
Check that the system is not powered.

It is now possible to connect all your system devices as per the following diagrams.





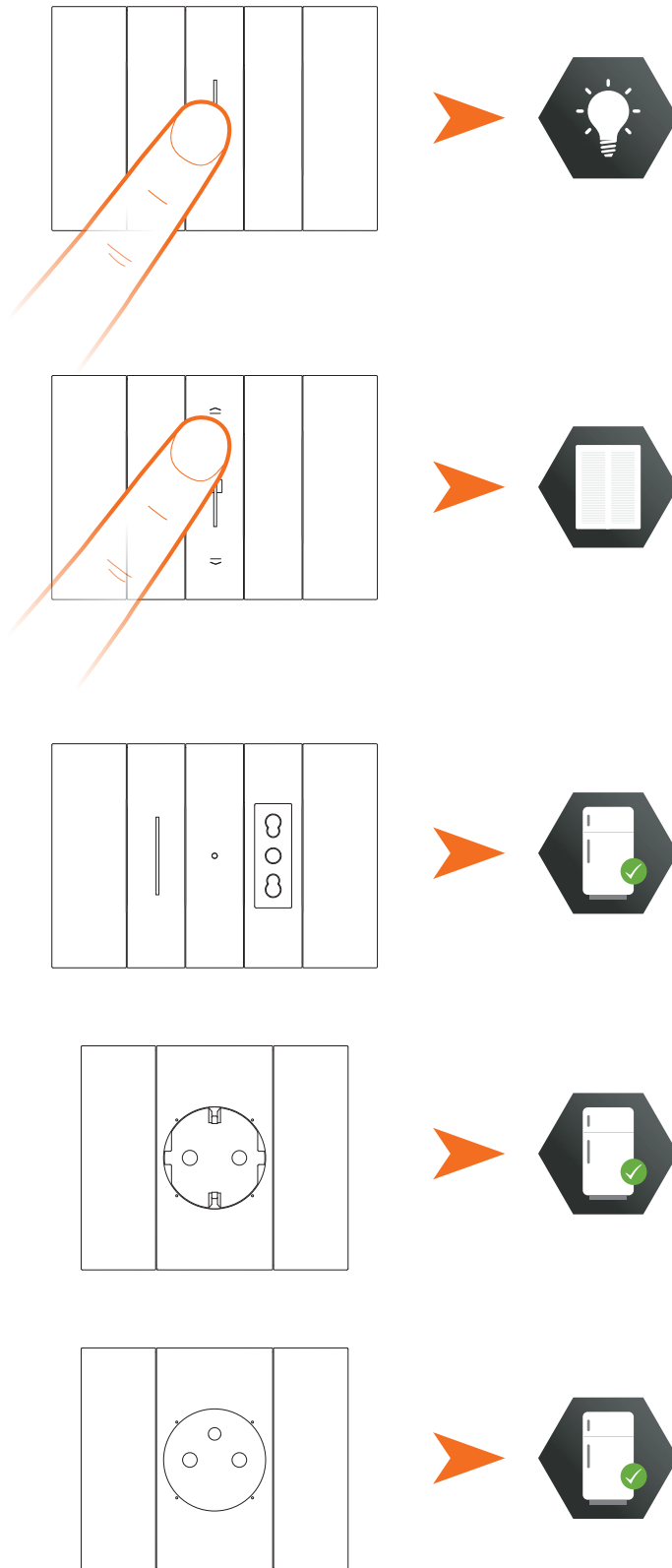
2. Reconnect the power using the general switch.



Check that the LEDs of all the devices turn on red steady (with the exception of the wireless LEDs, which will be off).



After installing the Smart electric system, it will be possible to locally control lights and rolling shutters without further set up needed.

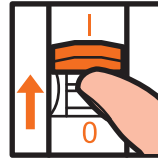


Note: connected sockets will be powered by default.

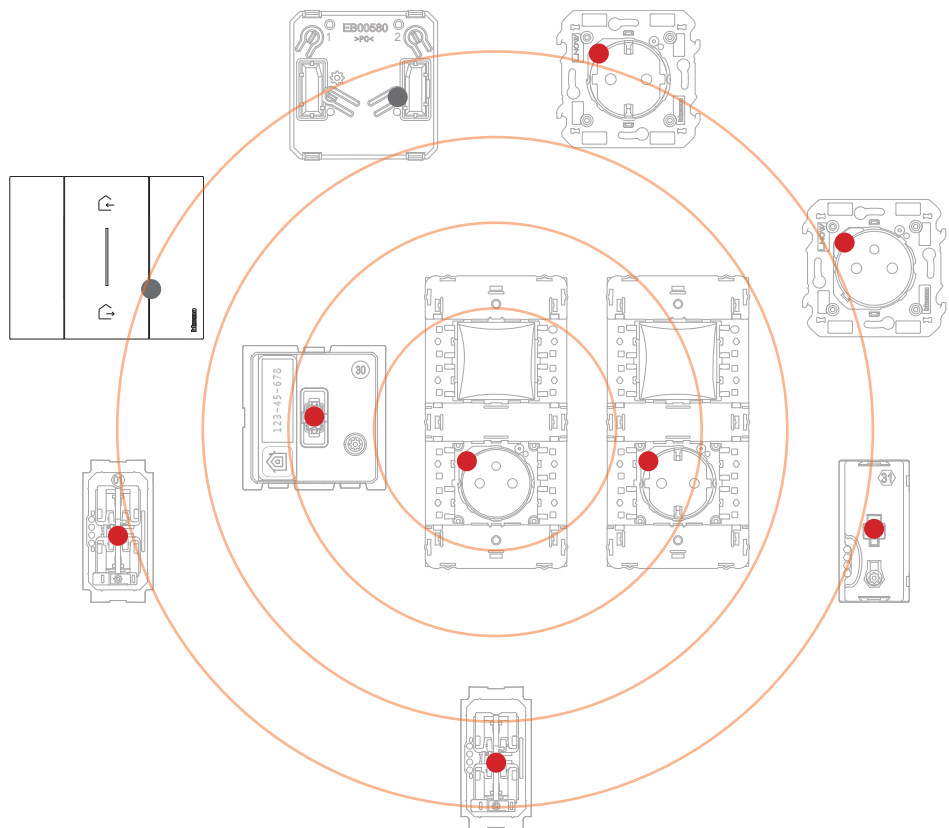
It is now possible to associate all the devices and take advantage of the connected functions of your system.



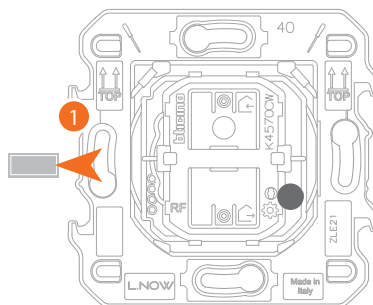
Associate the connected devices



ON



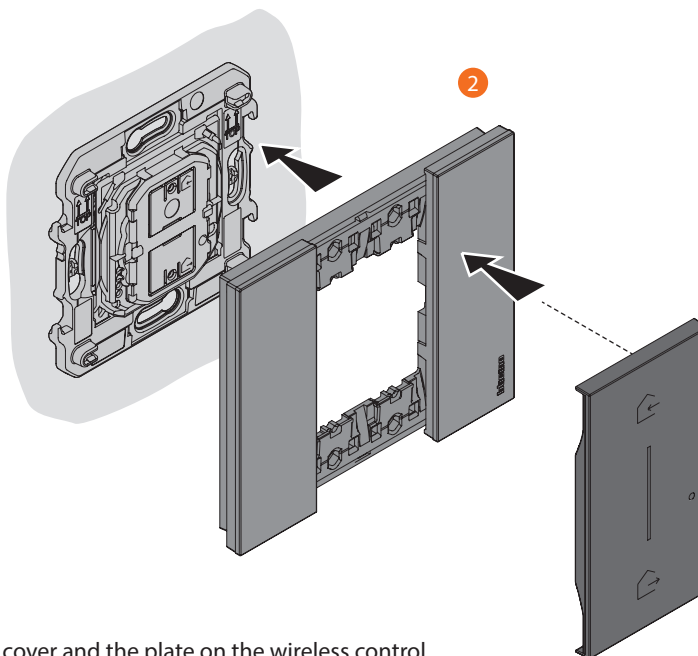
Wait 1 minute for correct system start-up, after which complete the following association procedure within 15 minutes from powering.
If this time is exceeded, disconnect and then reconnect the power.



K4570CW Master, wireless In&Out scenario control

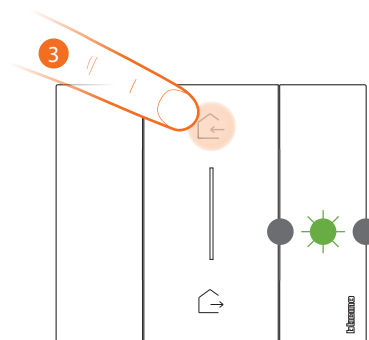
1. Remove the tab from the wireless control (K4570CW Master) in K4500C – KG/KW/KM4501C – KG/KW/KM4502C.

Note: after re-powering the system always wait at least one minute.

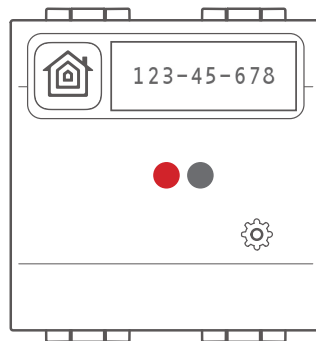


2. Fit the cover and the plate on the wireless control.

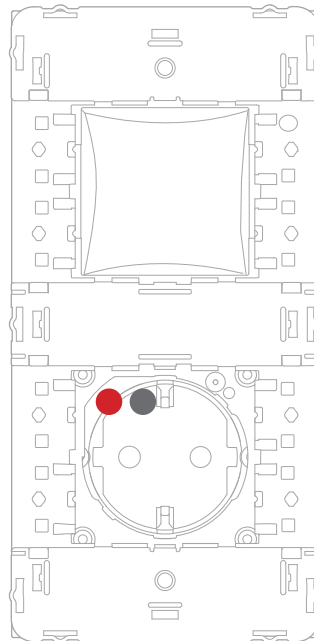
Warning: if cover and plate are not fitted, do not press the wireless control keys.



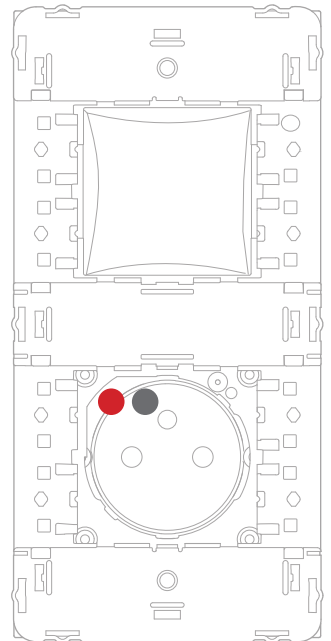
3. Press and release one of the control keys: the LED flashes green; release it and wait for the LED to turn off.



K4500C Gateway

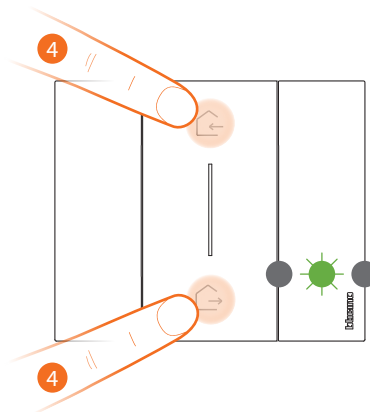


KG/KW/KM4501C Gateway



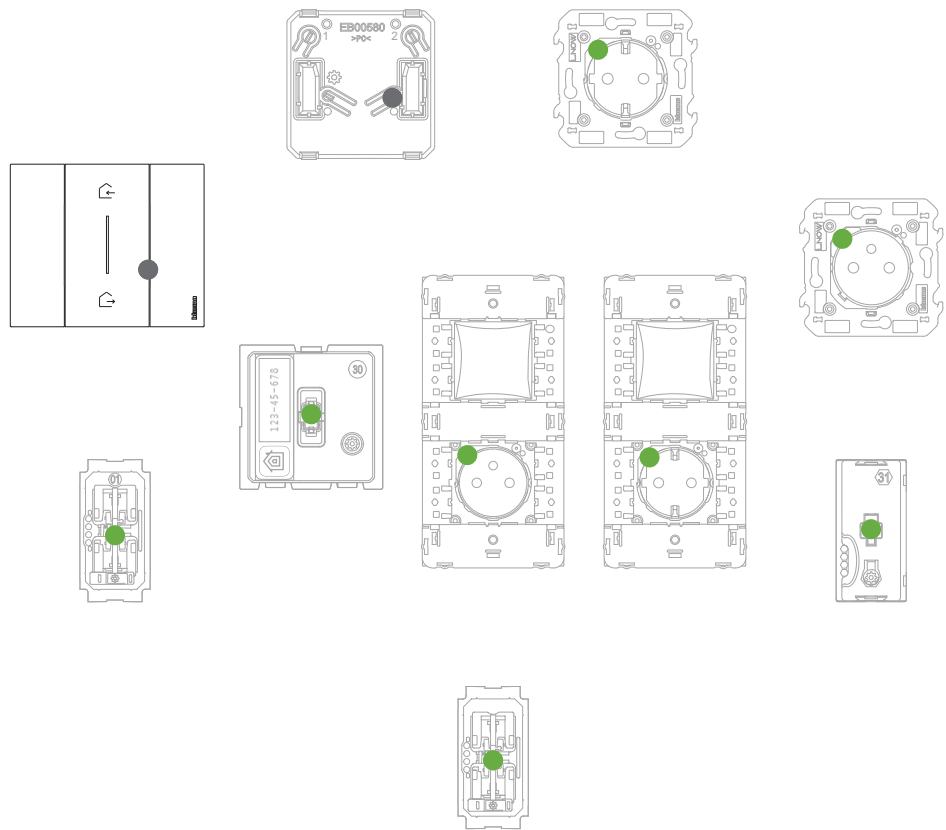
KG/KW/KM4502C Gateway

The Gateway LED goes from red to off.



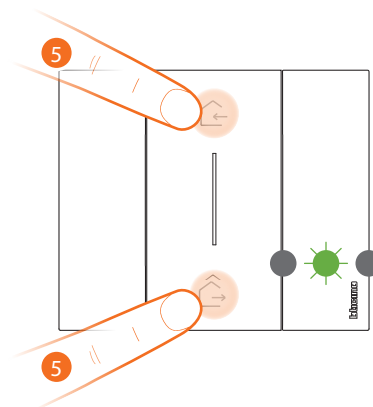
K4570CW Master, wireless In&Out scenario control

- 4. Start the association:**
press and hold down the two control keys at the same time, the LED will turn green, the LED switches off.



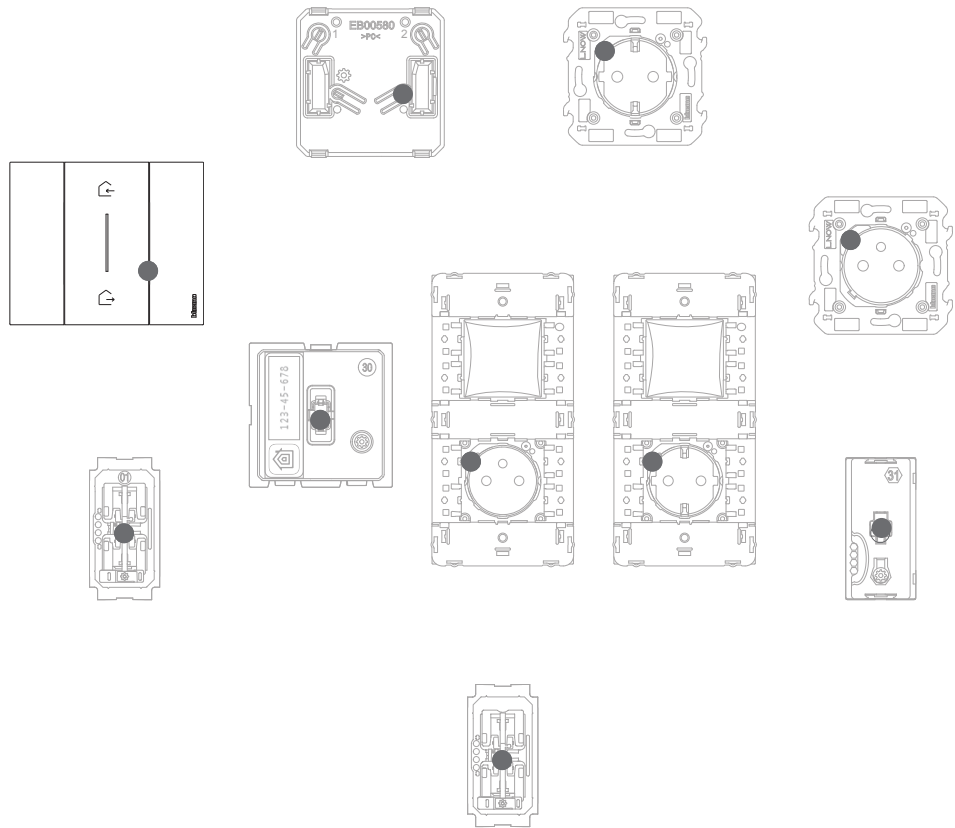
Check that the LEDs of all the devices turn green steady (with the exception of the wireless LEDs, which will be off).

Note: the LEDs may take up to 15 minutes to turn from red to green. After this time, the procedure will end automatically.



K4570CW Master, wireless In&Out scenario control

- 5. End the association:**
press and release the two control keys at the same time.
The LED will start flashing green: wait until it turns off.

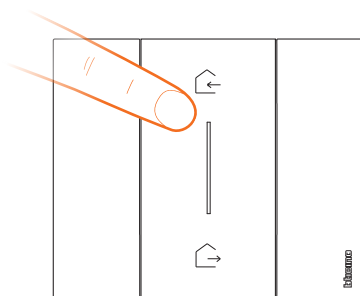


Check that the LEDs of all the devices immediately turn off: the connected devices are now associated with each other.

Note: if the LEDs of any devices stay red, disconnect the power from the system, reconnect it, wait a minute and then repeat the procedure from item 4.

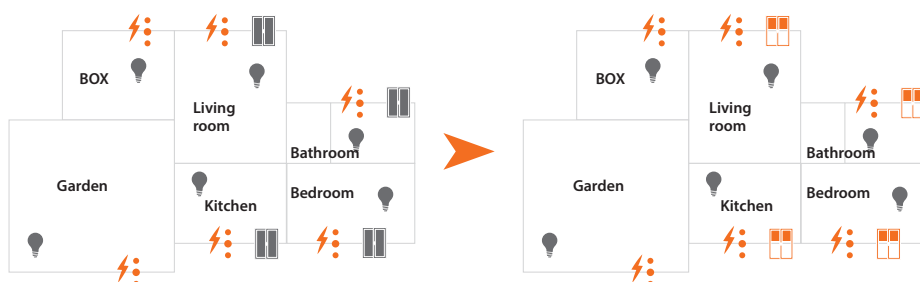


After associating the K4570CW Master wireless scenario control, it is possible to activate the IN/OUT scenarios that can be controlled by the same.

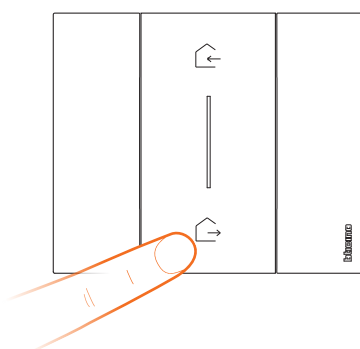


K4570CW upper key for **IN** scenario.

- Shutters SU
- No effect on sockets
- No effects on lights and relays

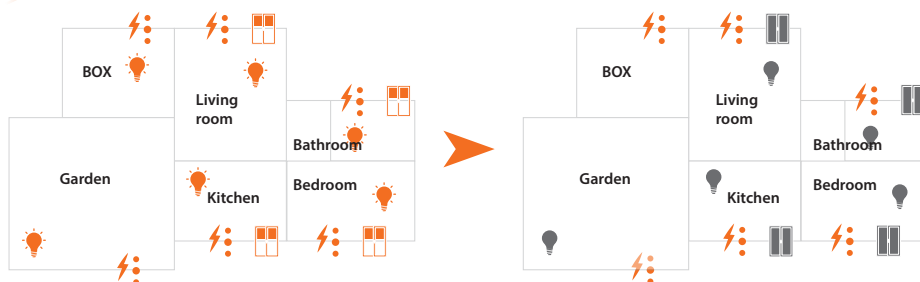


Note: after completing the association, wait a few minutes before activating the scenarios.



K4570CW lower key for **OUT** scenario

- Lights and relays OFF
- Shutters DOWN
- No effect on sockets



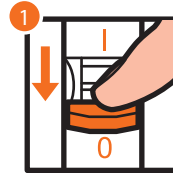
Following the procedure below, it is also possible to add other K4570CW scenario controls or the K4574CW Night/Day wireless scenario control:

Note: the K4574CW wireless scenario control is preset for controlling Night and Day scenarios. It is then possible to define the actions that will perform these scenarios using the **Home + Control App**.



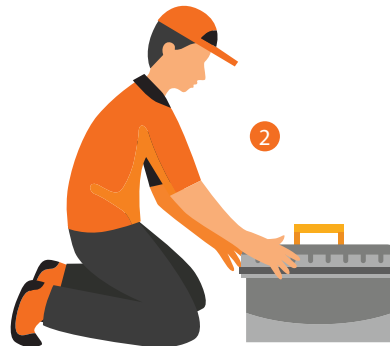
Add a connected device

Nota: if the association with the Home + Control App has already been completed, follow the instructions of the "Add a product to this home" menu in the App, or

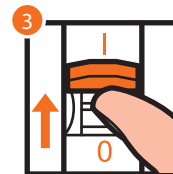


OFF

1. Disconnect the voltage from the general switch.

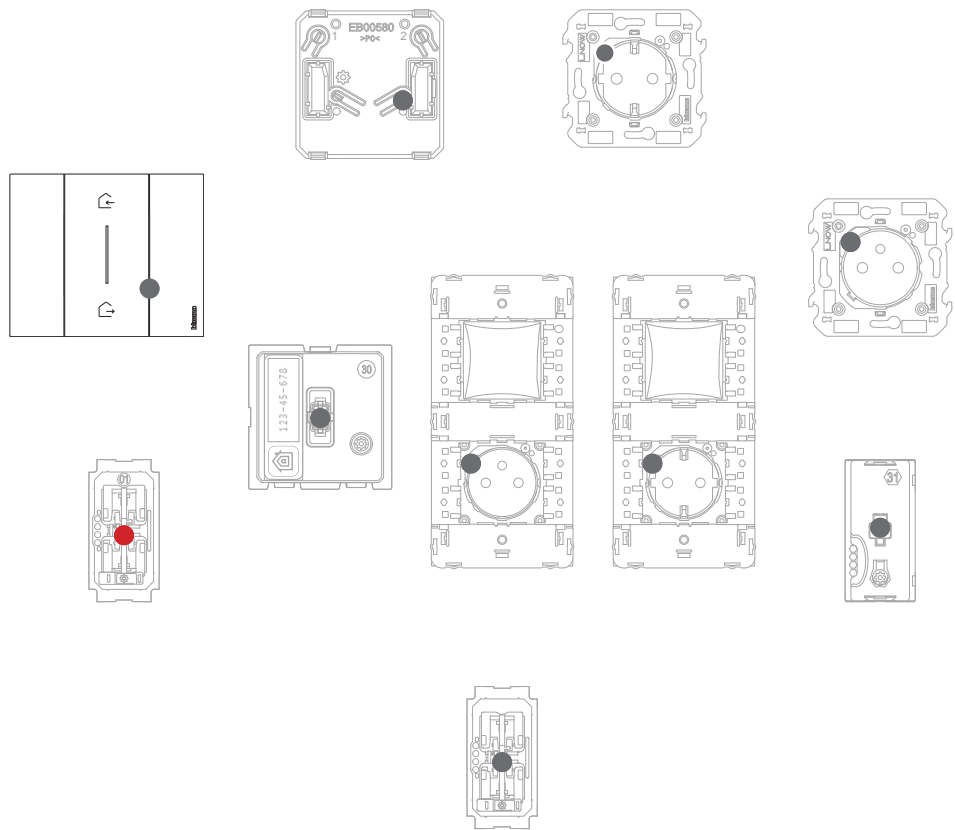


2. Install the new connected device.



ON

3. Reconnect the power supply using the general switch and wait 1 minute for correct system startup.



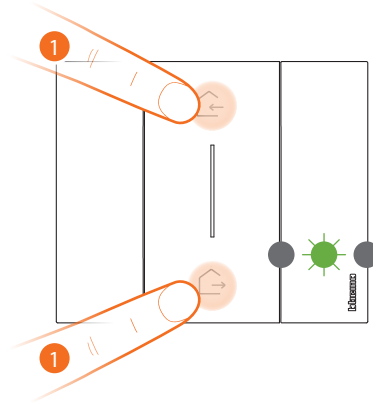
Check that the LEDs of all the devices are off, with the exception of the device to add, which must have a steady red LED.

4. Complete the association of the new device as shown in "Associate connected devices"(point 3).

Note: if completed using the App, this procedure will suggest exactly the same sequence of actions described here.



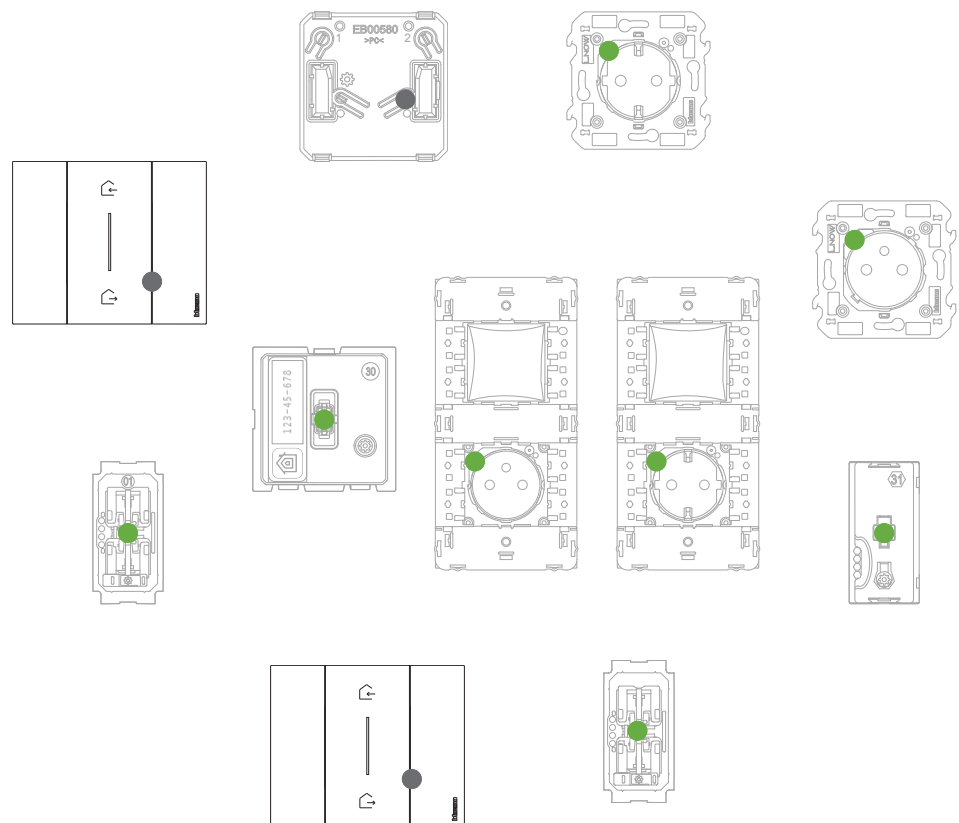
Add a wireless scenario control



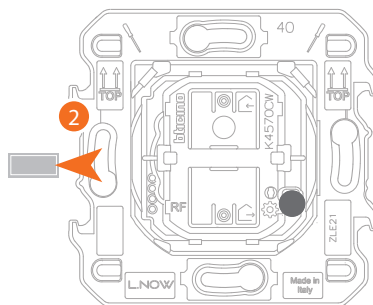
K4570CW Master, wireless In&Out scenario control

1. Start the association:

press and hold down the two control keys at the same time, the LED will turn green. Release the keys and wait until it turns off.

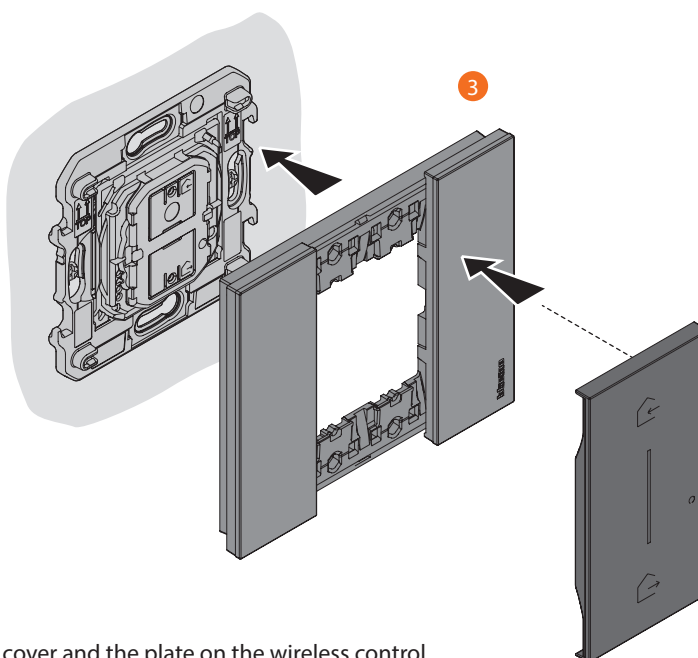


Check that the LEDs of all the devices immediately turn green steady (with the exception of the wireless LEDs, which will be off).



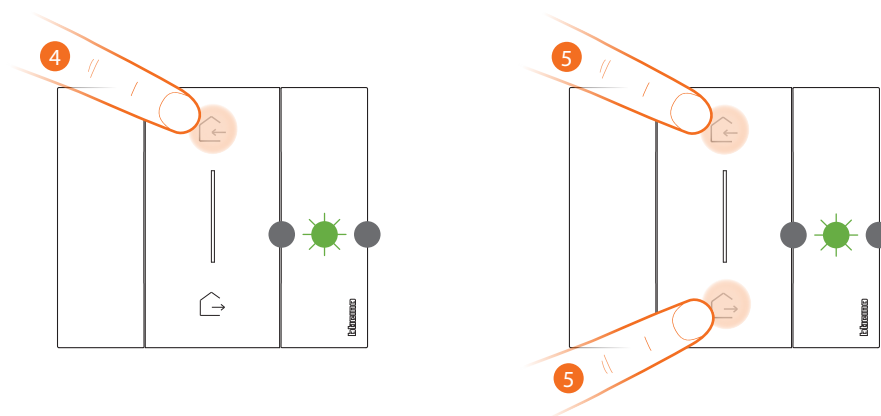
K4570CW Master, wireless In&Out scenario control

- Remove the tab from the new control.

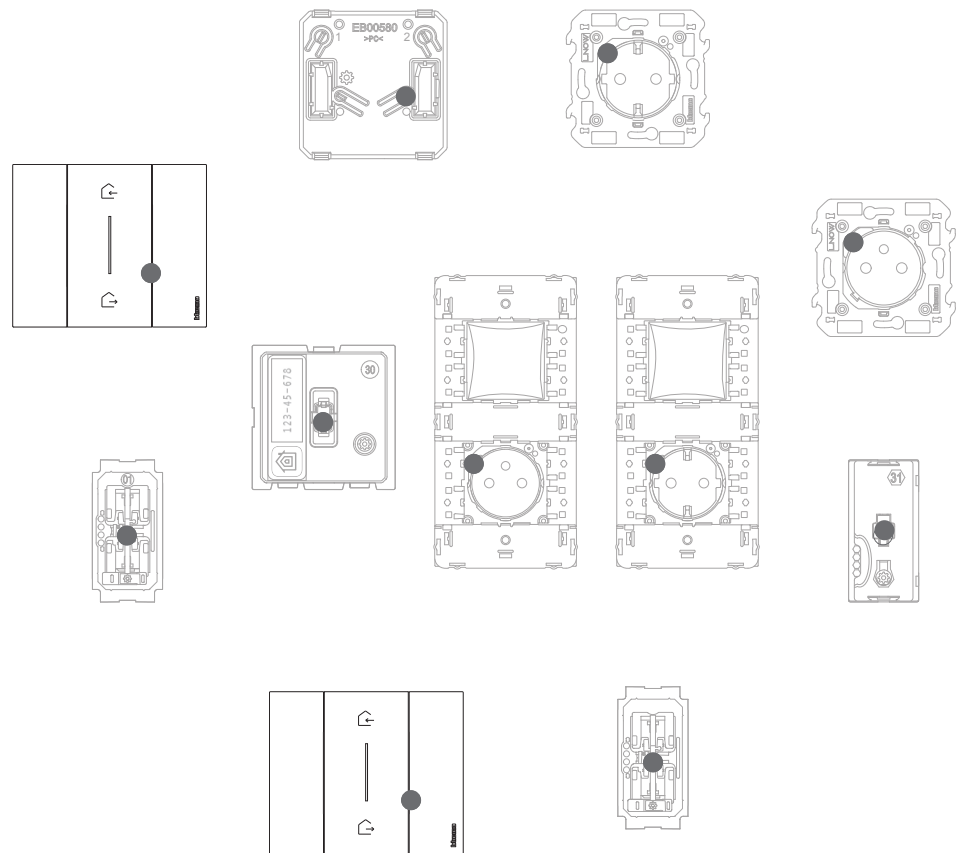


- Fit the cover and the plate on the wireless control.

Warning: if cover and plate are not fitted, do not press the wireless control keys.



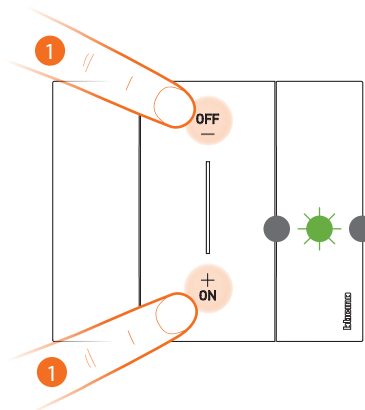
- Press and release one of the control keys: the LED flashes green; release it and wait for the LED to turn off.
- End the association:**
press and release the two control keys at the same time.
The LED will start flashing green: wait until it turns off.



Check that the LEDs of all the devices immediately turn off. The control is now associated to your Smart electric system and you will be able to control the IN/OUT and/or Day/Night scenarios. You can also add light control K4003CW – K4003DCW – 3577C or rolling shutter control K4027CW using the following procedure.



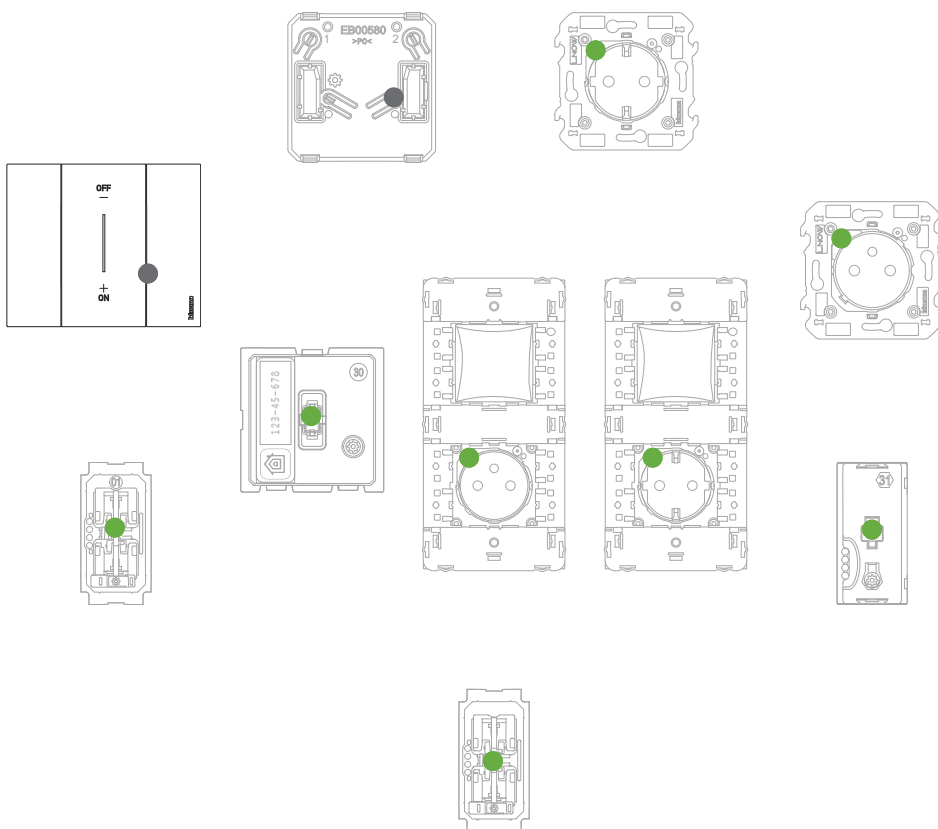
Associate a wireless light/rolling shutter control to one or more modular connected devices



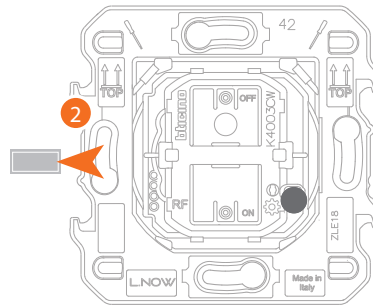
*K4003CW – K4003DCW – 3577C wireless light control
or
K4027CW wireless shutter control*

1. Start the association::

press and hold down the two control keys at the same time, the LED will turn green. Release the keys and wait until it turns off.

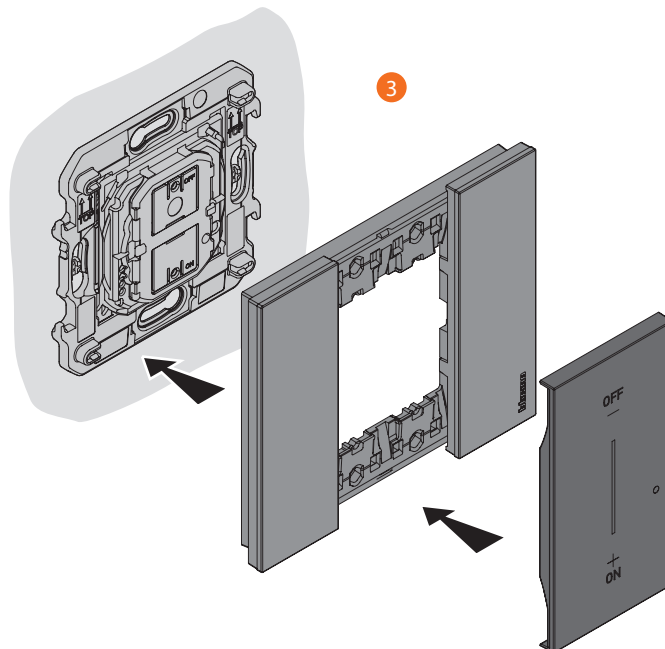


Check that the LEDs of all the devices immediately turn green steady (with the exception of the wireless LEDs, which will be off).



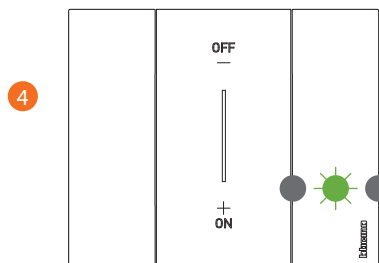
K4003CW – K4003DCW – 3577C wireless light control
or
K4027CW wireless shutter control

2. Remove the tab from the new control.

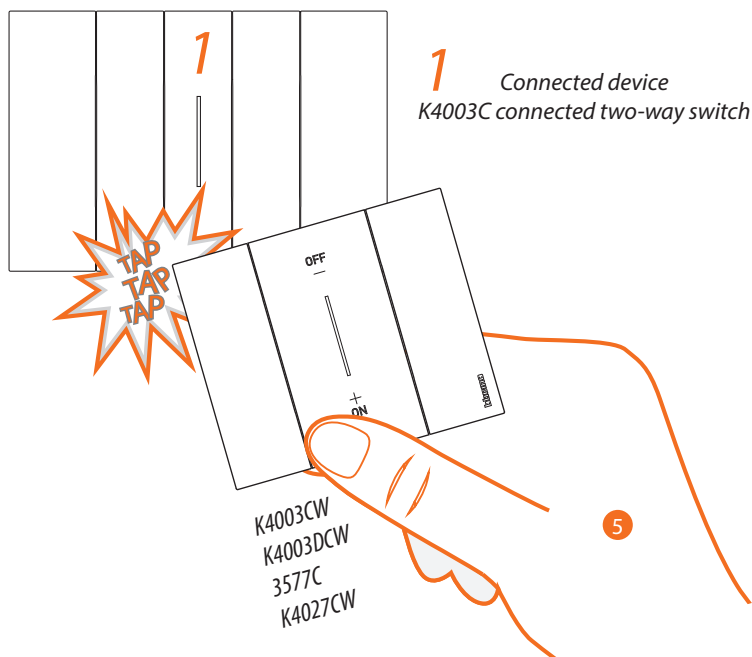


3. Fit the cover and the plate on the wireless control.

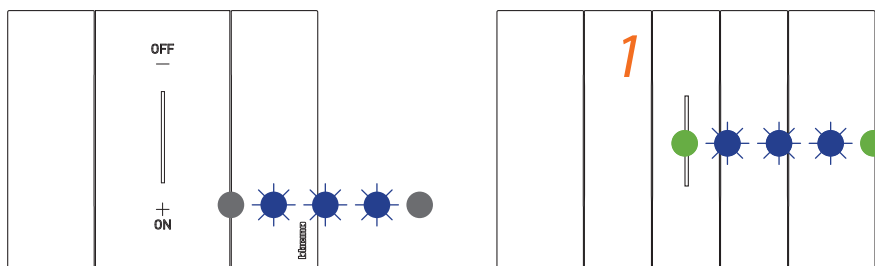
Warning: if cover and plate are not fitted, do not press the wireless control keys.



4. Press and release one of the two control keys: the LED flashes green; wait until it turns off. The control is now associated to your Smart electric system.



5. Press and hold down one of the two keys of the wireless control to associate, with the control, **touch three times (gently and in quick sequence)** the connected device to associate.



*K4003CW – K4003DCW – 3577C wireless light control
or
K4027CW wireless shutter control*

The LEDs flash three times blue. Release the wireless control. The control LED goes from blue flashing to off, turns on again blue for a second and then turns off. The LED of the connected device goes from blue flashing to green, then turns back to blue for one second and then again to green.

If only one connected device needs to be associated, go to item 7 to complete the association, otherwise continue as indicated at item 6.

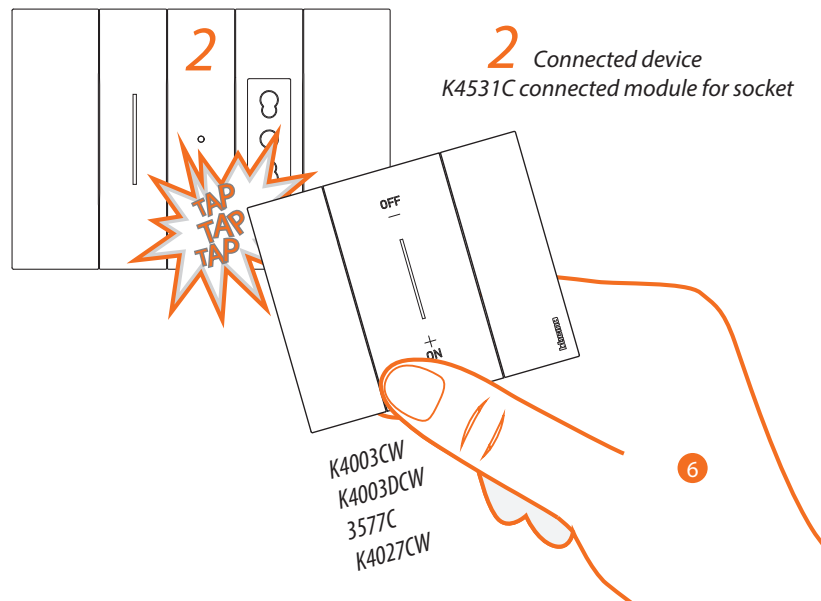


Table A Association of the connected devices/wireless controls		
Wireless controls		Connected devices that can be controlled
K4003DCW K4003CW 3577C	Lights	K4003C K4411CM2 3584C
K4027CW	Shutters	K4027C K4027CM2
K4003CW	Sockets *	K4531C KG/KW/KM4441AC KG/KW/KM4441AC

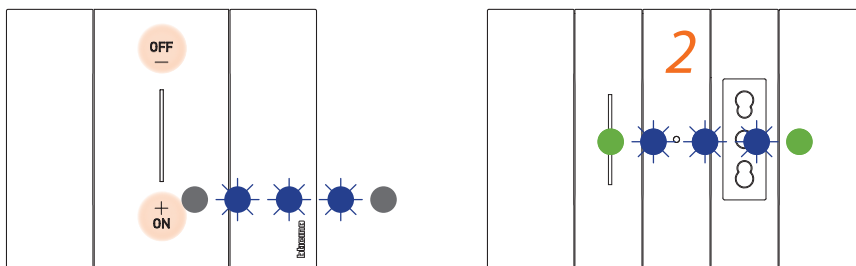
* **Note:** even when associated to a wireless light control, the controlled sockets are not controlled by wireless scenario controls controlling lights. Using the **Home + Control** App it is possible to define or modify the actions that will be performed by the four scenarios.

The connected devices to associate to the control can be of different types, although they must be of the types listed (see table A).

In this example, the first device is a connected two-way switch, the second is a connected socket module.

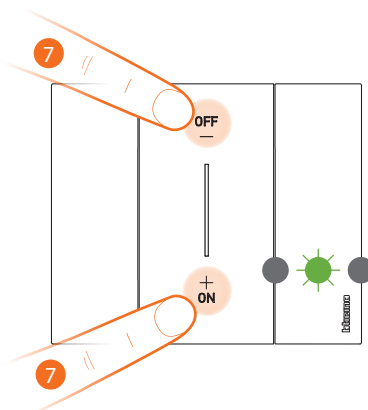


6. Press and hold down one of the two keys of the wireless control to associate, with the control, **touch three times (gently and in quick sequence)** the connected device to associate.



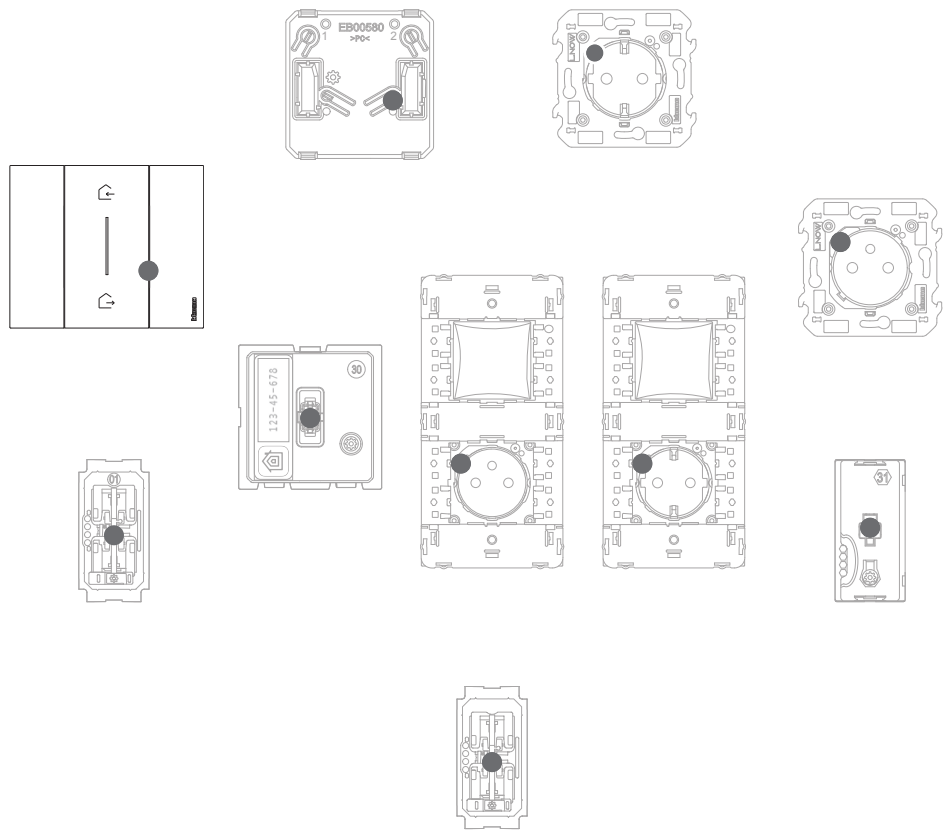
*K4003CW – K4003DCW – 3577C wireless light control
or
K4027CW wireless shutter control*

The LEDs flash three times blue. Release the wireless control.
The control LED goes from blue flashing to off, turns on again blue for a second and then turns off.
The LED of the connected device goes from blue flashing to green, then turns back to blue for one second and then again to green.



*K4003CW – K4003DCW – 3577C wireless light control
or
K4027CW wireless shutter control*

- 7. End the association:**
press and release the two control keys at the same time. The LED will start flashing green: wait until it turns off.

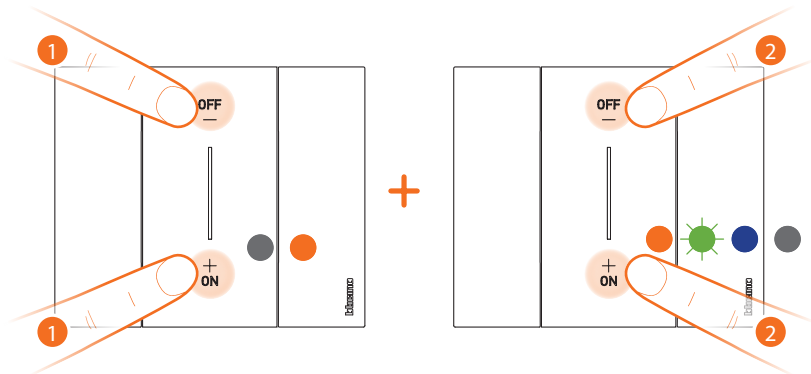


Check that the LEDs of all the devices immediately turn off: the association has been completed correctly.

Repeat the procedure shown for each wireless control point from which you wish to control the connected devices.



Dissociate a wireless control from the connected devices



K4003CW – K4003DCW – 3577C wireless light control
or
K4027CW wireless shutter control

1. Press at the same time the two pushbuttons of the control to dissociate until the LED turns orange.
While the LED is orange release the pushbuttons.
2. Press and release the two control keys at the same time.
The LED will start flashing green, then turns blue, and then turns off.

Reset to the factory settings

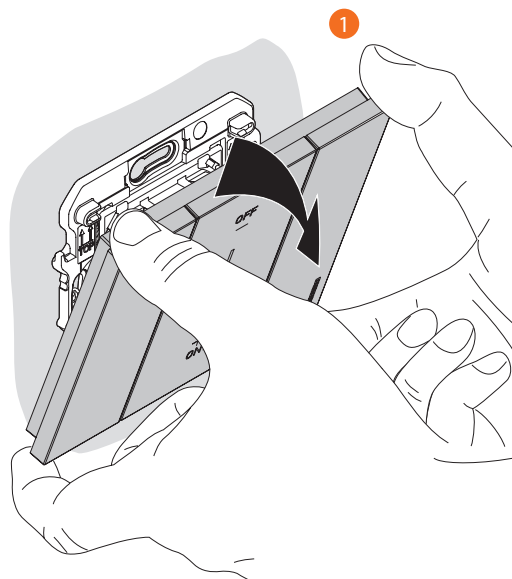
Warning: this procedure completely dissociates the device from the smart electric system.

Warning: never reset the K4570CWIN/OUT Master control; in case of reset, start the association with the zigbee network by quickly pressing the Gateway reset pushbutton, and then press and release a key of the K570CW control and wait for the association to take place (the control key flashes green for a few seconds and then turns off).

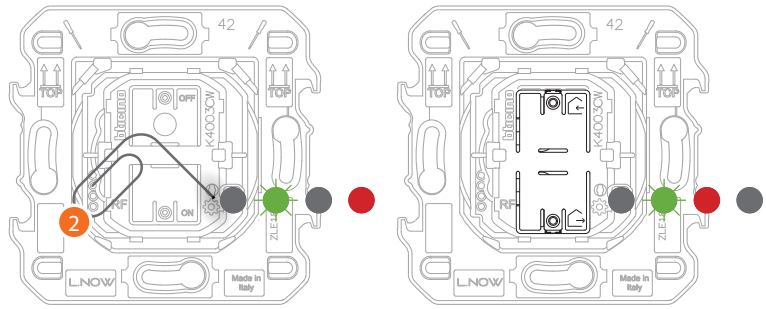
Procedure for wireless controls K4003CW – K4570CW – K4003DCW – K4574CW – 3577C wireless light control;

or

K4027CW wireless shutter control



1. Remove the plate and the cover to access the reset button.

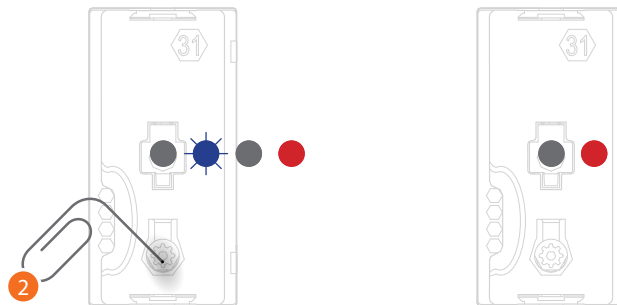


**K4003CW – K4003DCW – 3577C wireless light control
or
K4027CW wireless shutter control**

2. Press and hold down the reset pushbutton .
The LED flashes green, then it goes off, then turns red.
Now release the pushbutton.
The LED flashes green, then turns red and then it goes off.

Procedure for connected devices

K4003C – 3584C – K4411CM2, – K4027C – K4027CM2 – K4027C –
K4027CM2 – K4531C – KG/KW/KM4441AC – KG/KW/KM4441AC



2. Press and hold down the reset pushbutton .
The LED flashes blue, then it goes off, then turns red.
Now release the pushbutton.
The LED turns red steady.

Warning: a short accidental pressure of the reset pushbutton, starts the association (green LEDs are ON).
Press quickly and at the same time the two keys of the 4570CW Master control to end it.



Use the App

After completing the association of all the devices connected to the gateway and adding any wireless controls associated to connected devices, it will immediately be possible to:

- activate the "IN" scenario: all rolling shutters go up
- activate the "OUT" scenario: all lights turn off and all rolling shutters go down
- control lights, sockets and rolling shutters with their wireless controls

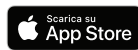
Download the "Home + Control" App and configure it so that all the other functions of the Smart electric system are available:

- scenario customisation
- remote control with Smartphone
- voice control using your favourite voice assistant
- receive notifications in case of overload or fault in the system
- check electric consumptions

for more info visit
www.homesystems-legrandgroup.com



To download the Home + Control App





BTicino SpA
Viale Borri, 231
21100 Varese
www.bticino.com
