



## Content

<b>1. Hardware and Software requirements</b>	<b>4</b>
<b>2. Software update</b>	<b>4</b>
<b>3. Fundamental concepts</b>	<b>4</b>
3.1 Function menus and pushbuttons	5
3.2 Graphic Interface Configuration	6
3.3 Connecting the device to a PC	7
3.4 Send the configuration	8
3.5 Receive the configuration	9
3.6 Update the Firmware	9
3.7 Device info request	9
<b>4. Project configuration</b>	<b>10</b>
4.1 Main screen	11
4.2 Automation	14
4.3 Lighting	16
4.4 Burglar alarm	19
4.5 Energy Management	20
4.6 Temperature control	28
4.7 Sound system	39
4.8 Scenarios	42
4.9 Improved scenarios and schedulers	44
4.10 Video door entry system	48
4.11 Multimedia	51
4.12 Favourites	56
4.13 Home page toolbar	57
4.14 Settings	58
4.15 Ringtone configuration	68
4.16 Setting the currency	73
4.17 General Device Parameters	74

## 1. Hardware and Software requirements

### System requirements\*

- PC with Pentium > 2 GHz or similar
- CD-ROM
- Video resolution 800 x 600, 256 colours.
- Windows XP SP2 (32 bit), Windows Vista (32 bit or 64 bit) or Windows 7 (32 bit o 64 bit)
- 1 MB RAM memory (XP)
- Hard Disk: 500 MB minimum free space available
- Microsoft™ Framework .NET 3.5 SP1
- Minimum browser requirements for correct display of the web pages: Internet Explorer ver. 7, Firefox ver. 3, Chrome ver. 9, Safari ver. 4 are required.  
However, for the energy supervision functions, the requirements for Internet Explorer are higher: ver.8 with Google Frame plug-in or better.

\*For the constantly updated requirements visit the [www.bticino.it](http://www.bticino.it) website

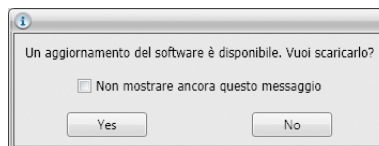


*Warning: The TiMultimediaTouchScreen software is a necessary tool for appropriate configuration of Local Display. The content of this software is protected by exclusive rights owned by the company BTicino SpA.*

## 2. Software update

Once installed, the TiMultimediaTouchScreen software will automatically search for any updated versions on line.

If any are found, the user will be asked to enter a path for saving the new updated version of the executable file:



It will however still be possible to work using the current version, and install the update at a later date.

## 3. Fundamental concepts

The TiMultimediaTouchScreen software gives the possibility of configuring Local Display (using a simple and intuitive procedure, with the creation of a customised project based on personal needs and the actual system installed). The software also performs a check on the configuration, notifying any configuration errors.

### Creating a new project

- Start TiMultimediaTouchScreen
- Create a new project
- Send the data to the device

### Modifying an existing project

- Receive the current configuration data from Local Display
- Make any changes
- Send the data of the completed project using Local Display.

With TiMultimediaTouchScreen it is also possible to update the firmware versions of the devices ("Update firmware") with new versions released by BTicino.



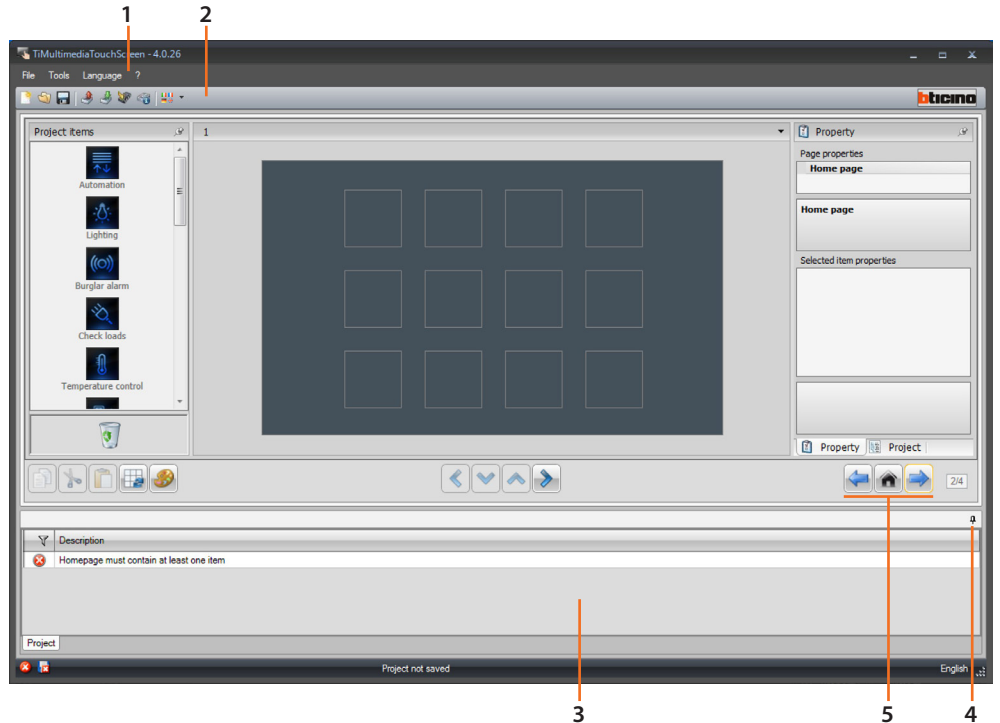
*Warning: for correct operation of the TiMultimediaTouchScreen software the devices must be installed following the indications shown in the corresponding instruction leaflets supplied with the products.*



*Warning: When viewing the manual, click the  symbol to jump to the corresponding chapter.*

### 3.1 Function menus and pushbuttons

After initialising the program the start screen will appear:



1. Pull-down menus
2. Pushbutton menus
3. Info and Errors area
4. Opens the Info and Errors area
5. Navigation pushbuttons

A B C



- A. Previous page
- B. Start page
- C. Next page

All the functions that can be performed with TiMultimediaTouchScreen can be selected by clicking the icons on the toolbar, or by selecting the appropriate items from the drop down menus. The toolbar includes the following functions:



Creating, Opening, and Saving the configuration file



Receiving, and forwarding the configuration to the connected device



Device firmware update



Request device info



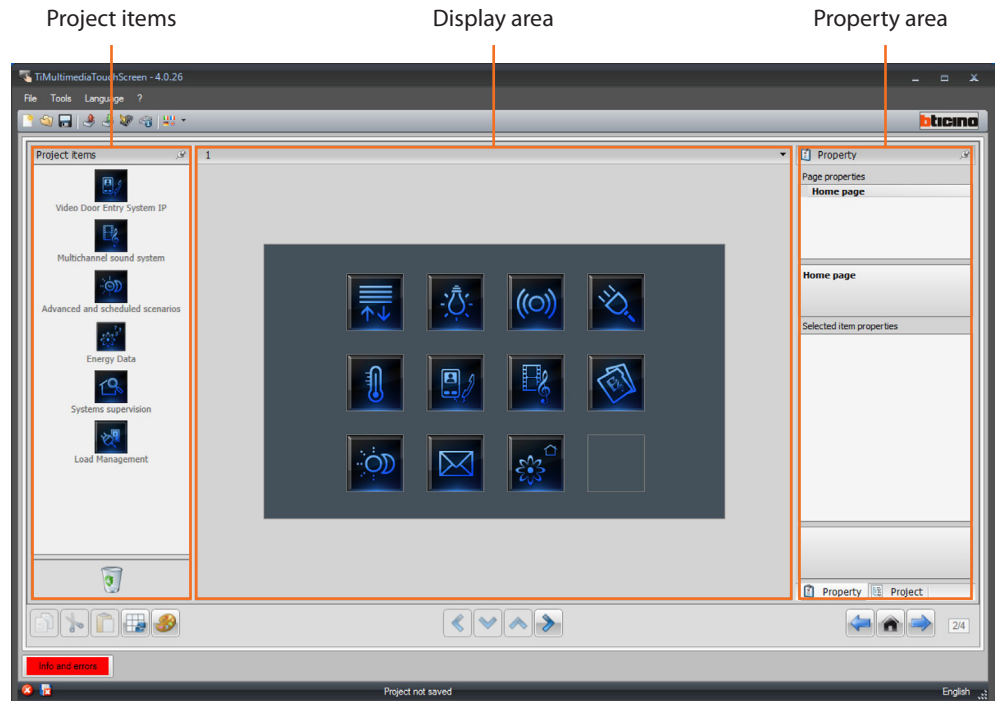
Application language selection



Connection to the [www.bticino.com](http://www.bticino.com) website

### 3.2 Graphic Interface Configuration

Use this screen to begin the creation of a project.



#### Project items

This area can be used to select the functions to include in the Multimedia Touch Screen menu. To insert a function, simply click and hold the mouse button on the function icon, and drag it to the Display area, or click on the icon twice with the left button of the mouse.

#### Display area

The Display area shows the new Multimedia Touch Screen menu setup. The first screen is the main page of the menu.

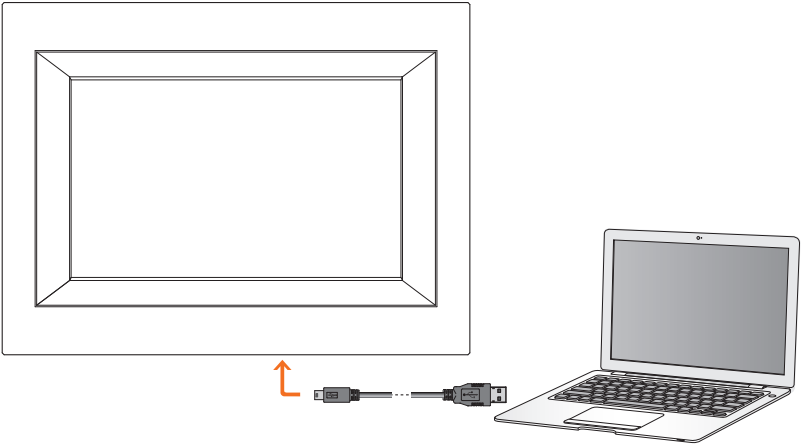
#### Property area

All the functions dragged to the Display area must be configured. When each function is selected, the "Selected item properties" area will display the parameters to be configured. It is now possible to update the "Description" field at one's own discretion. By going to "Project" display, it will be possible to check at all times the three structure for the entered functions. Go to the "Information list" screen to check if any mistakes have been made during the creation of the project.

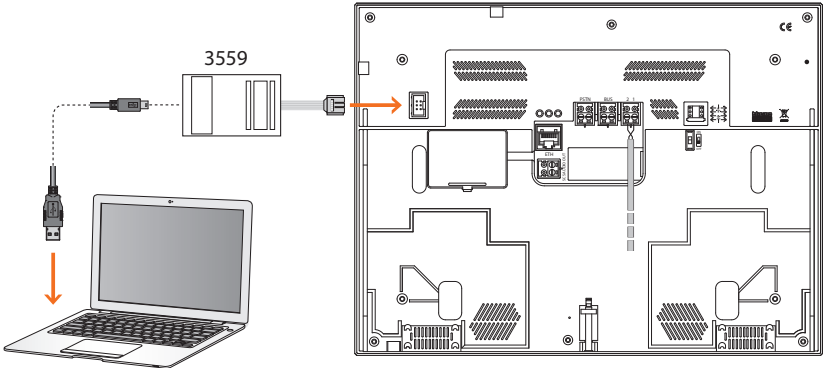
**3.3 Connecting the device to a PC**

To receive/transfer the configuration performed using TiMultimediaTouchScreen or to update the firmware, connect Multimedia Touch Screen to the PC using a USB-miniUSB cable, the serial connector (item 3559), or an Ethernet cable.

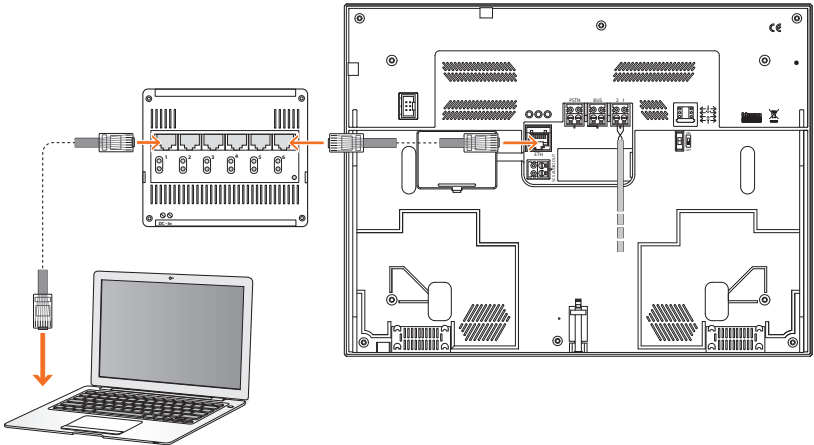
**USB connection**



**Serial connection**



**Ethernet connection**



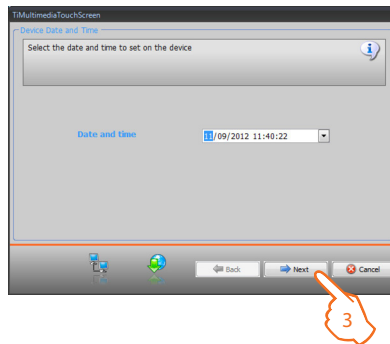
### 3.4 Send the configuration

It allows the user to send the project created in the device.

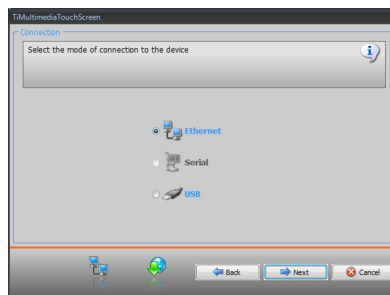
**Procedure:**

1. Connect the device to a PC as indicated in the corresponding section.
2. From the Tools pull-down menu select Send configuration.

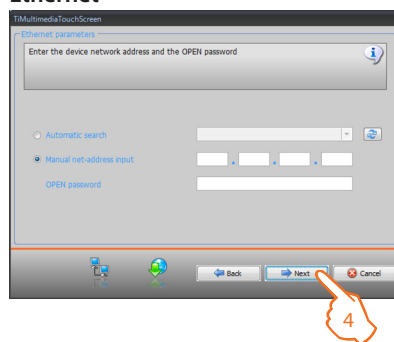
The following window appears:



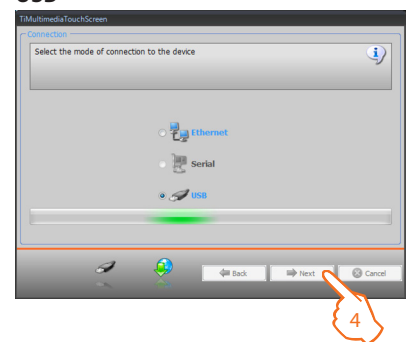
3. Click "Next" to select the connection mode between the Multimedia Touch Screen and the PC:



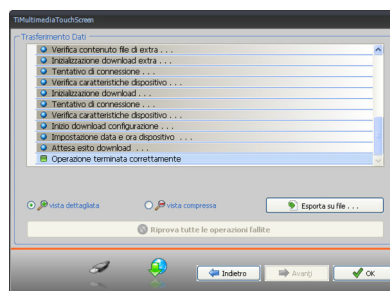
#### Ethernet



#### USB



4. Select "Next". The project will be transferred to the Multimedia Touch Screen.





### 3.5 Receive the configuration

It allows to receive the configuration present in the device; once the configuration has been acquired, this can be changed and saved in a file, or it can be resent to the device.

**Procedure:**

- Connect the device to a PC as indicated in the corresponding section.
- From the **Tools** pull-down menu select **Receive configuration**.

For the connection procedure see the **Send the Configuration** section.

### 3.6 Update the Firmware

It allows the user to update the device firmware.

**Procedure:**

- Connect the device to a PC as indicated in the corresponding section.
- From the **Tools** pull-down menu select **Update the firmware**.

The following window appears, where the user can search for the folder containing the Firmware file, with **.fwz** extension (compressed file).

- Select the file and click **Open** to continue.

For the connection procedure see the **Send the Configuration** section.

### 3.7 Device info request

It allows to display some information relating to the device connected to the PC.

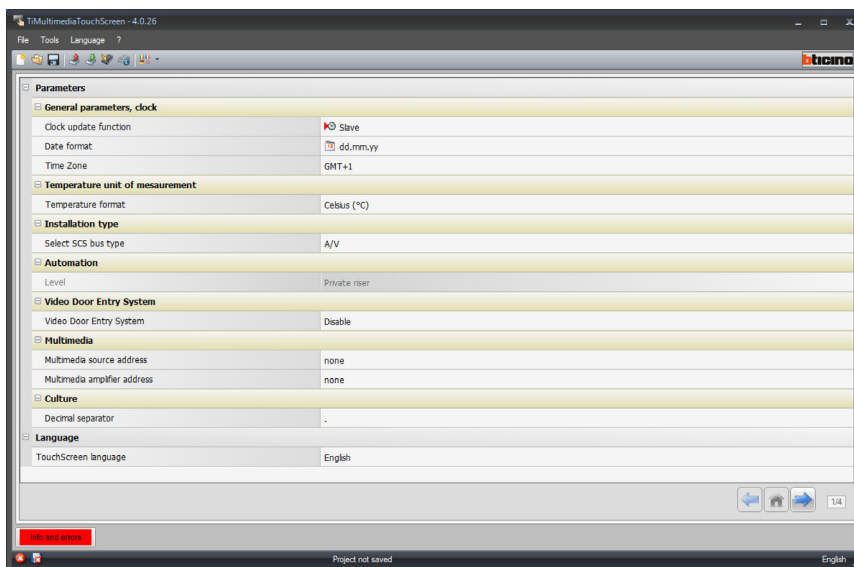
**Procedure:**

- Connect the device to a PC as indicated in the corresponding section.
- From the **Tools** pull-down menu select **Request device info**.

For the connection procedure see the **Send the Configuration** section.  
Click **Next** to open a screen showing the device hardware and software features.

## 4. Project configuration

When the TiMultimediaTouchScreen is started, a screen is displayed, where the user can set the device configuration parameters.



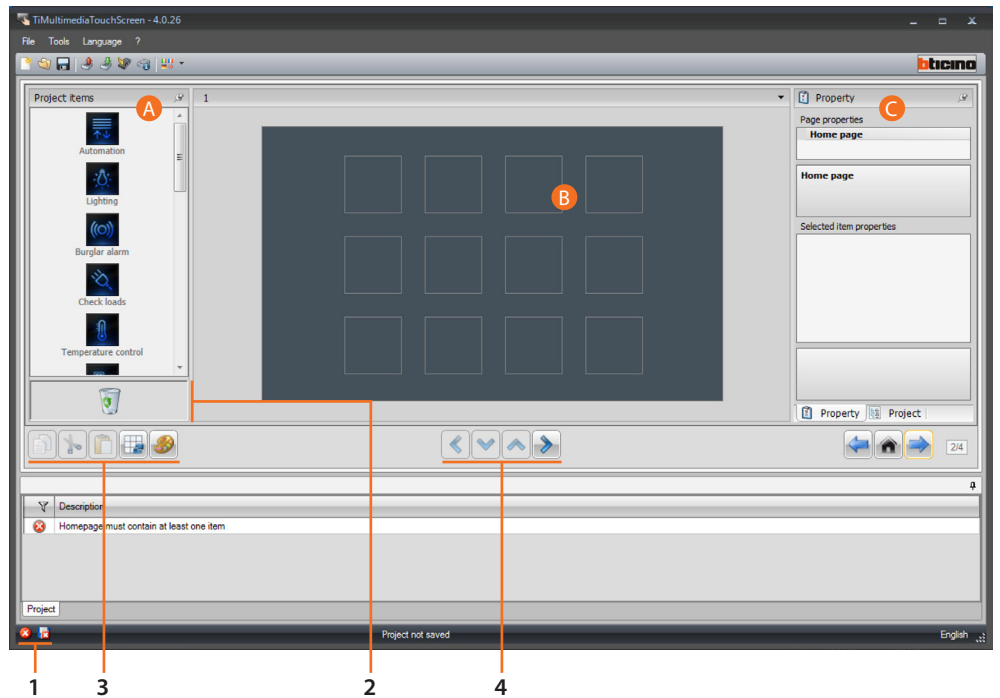
- **General parameters, clock**  
*Clock update function:* select if Multimedia Touch Screen should be set as the Master clock for the My Home system.  
*Update frequency:* this function is only active if the clock is set as Master and it can be used to set the intervals for sending the update to the My Home system devices set as Slave.  
*Date format:* Select the date display format (e.g.: dd.mm.yy / mm.dd.yy. / yy.mm.dd.).  
*Time zone:* select the correct time zone for the geographical area you live in.
- **Temperature unit of measurement**  
*Temperature format:* choose if Celsius (°F) or Fahrenheit (°F) degrees should be displayed
- **Installation type**  
*Select SCS bus type:* select **Multimedia** if the device is wired on the multichannel matrix; select **Automation** if the device is wired on the SCS BUS
- **Automation**  
*Level:* if the device has been wired on the SCS BUS, select the level it belongs to (private riser/local BUS)
- **Video door entry system**  
*Video door entry system:* select enable if the device is wired on the video door entry system, select disable if it is connected on the SCS BUS  
*Video door entry system type:* If multimedia has been selected in the SCS BUS configuration, it will be possible to select the type of video door entry system (SCS or IP)  
*H Address:* enter the address of the handset associated to the multimedia interface.
- **Multimediale**  
*Multimedia source address:* enter the Multimedia Touch Screen address as sound system source  
*Multimedia amplifier address:* enter the Multimedia Touch Screen address as amplifier of the sound system
- **Culture**  
*Decimal separator:* Indicate the decimal separator (full stop, or comma), based on the country of use.
- **Language**  
*TouchScreen language:* Set the language of the graphic interface of the device.

### 4.1 Main screen

The Screen essentially consists of 3 sections: on the left section (A) is the "Project items" area.

The central section (B), is the "Display" area. It is used to configure what will then be displayed as the Home Page of the device, and its subpages.

The right section (C) shows the "Property/Project" area, where the configuration fields for the object selected in the Display area are available.



1. File saving Display
2. Remove object
3. Navigation bar

A B C D E

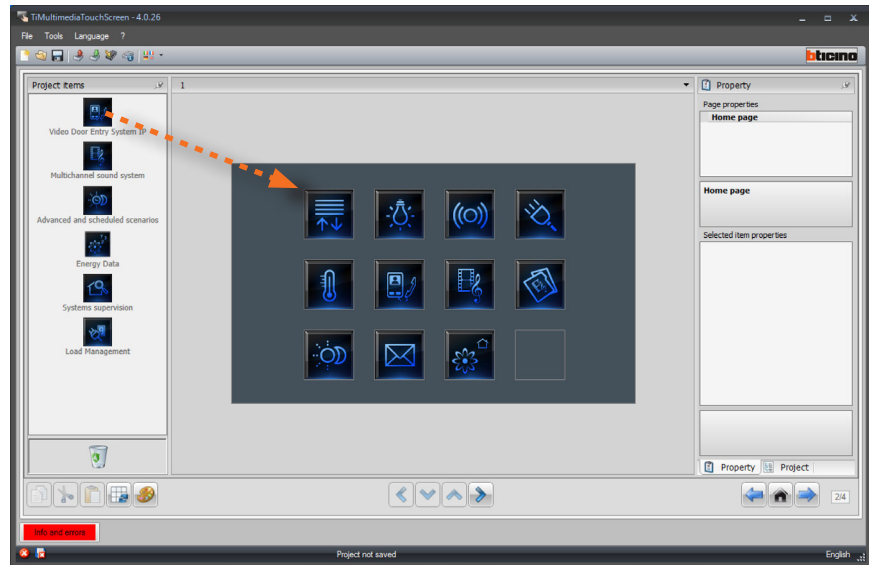


- A. Copy object
  - B. Cut object
  - C. Paste object
  - D. Align to the grid
  - E. Select skin
4. Pushbuttons to navigate through the pages



## Project items

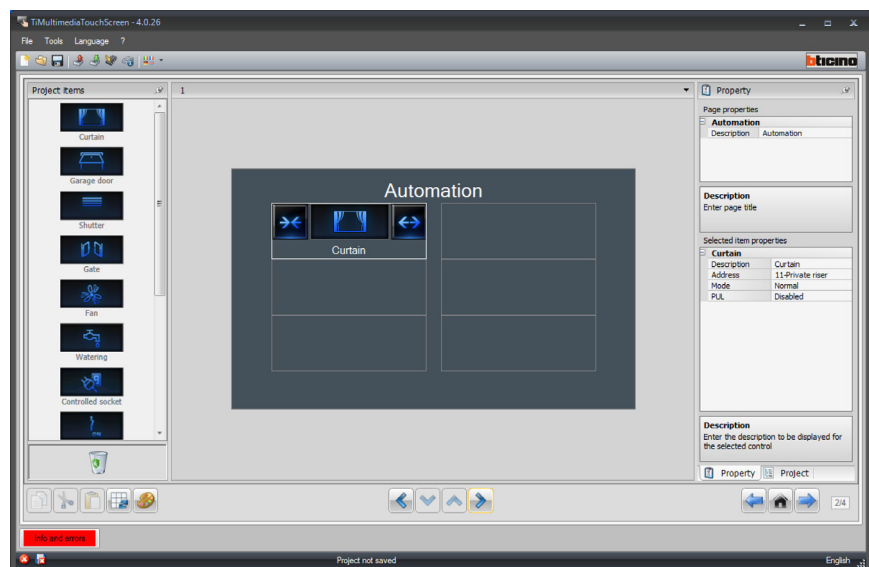
This area contains all the objects that can be used to build the pages. Simply drag the objects from the “Project Items” area to the “Display” area, or double click the desired object.



## Sub-pages

Some objects are used for connection to other pages, where correlated objects are grouped together.

The configuration of the sub-pages is performed following the order the objects have been included in the Home Page.



### Display

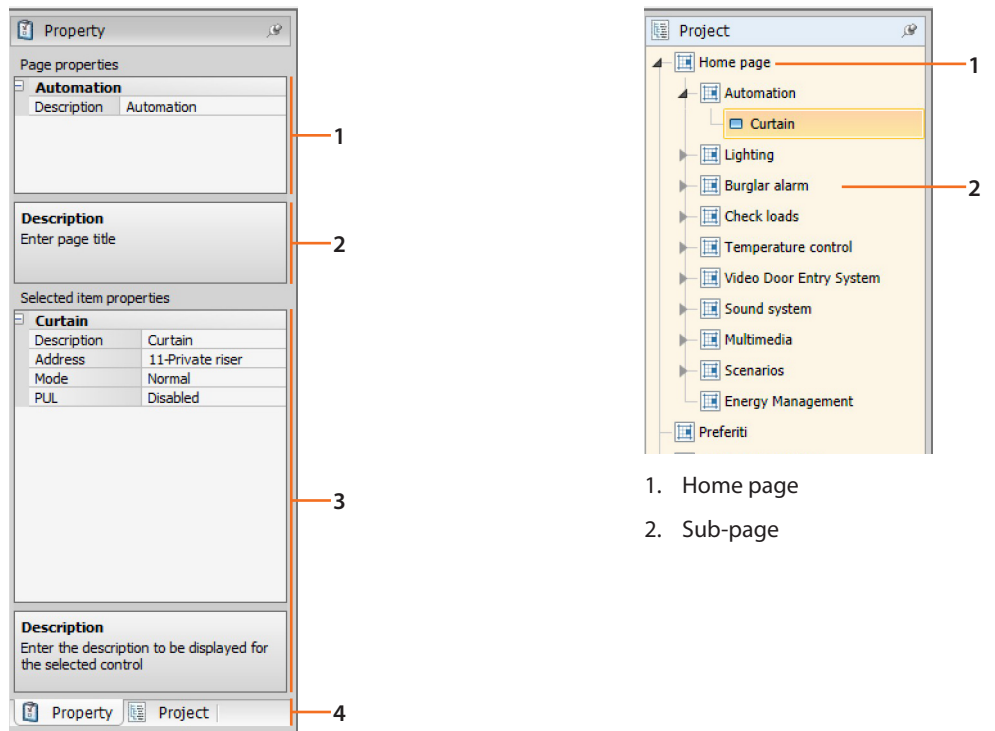
The “**Display**” area shows the future setup of the Home Page and the sub-pages of the device. This page consists of customisable objects. The “**Settings**” icon is the only one that cannot be removed.



### Property/Project Area

This area is split into two sections, which can be selected by clicking the labels in the bottom part. The “**Property**” section shows the configuration fields for the object currently selected in the Display area.

The “**Project**” section displays the objects by page in a tree menu format. In addition to selecting the objects, the user can also navigate through the project, selecting any available sub-pages.

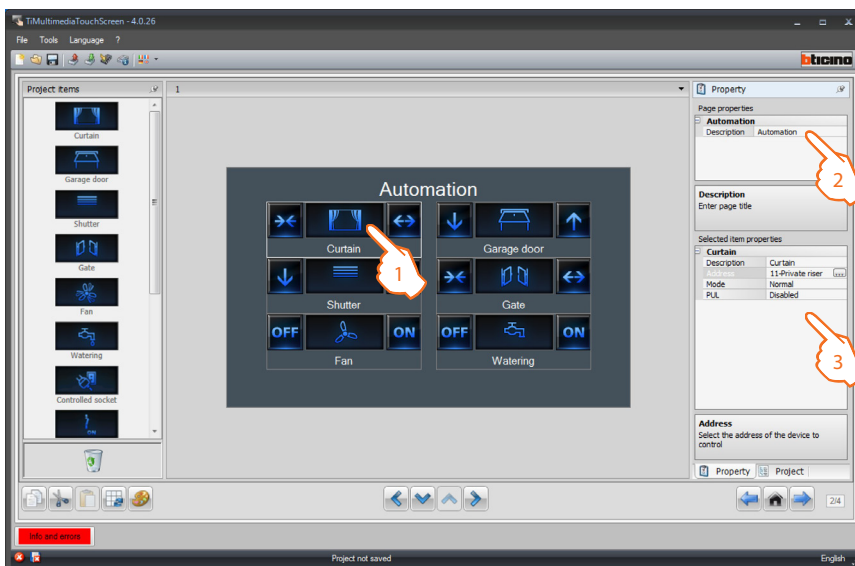


- 1. Home page
- 2. Sub-page

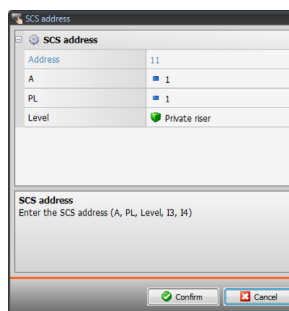
- 1. Selected object parameters
- 2. Indications for the configuration of the selected parameters
- 3. Selected object parameters
- 4. Property/project selection label

## 4.2 Automation

Drag the objects from the “Project items” area to the “Display” area, or simply double click on the object with the mouse (e.g.: double click on “Curtains”).

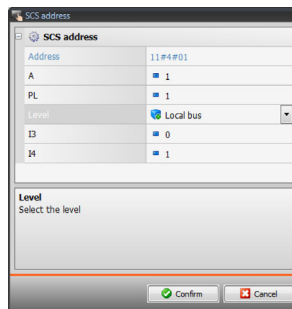


1. Select an object of the Display area.
  2. A personalised description of the page can be entered in the “Page properties” area.
  3. Inside the “Selected item properties” area it will be possible to enter a customised description of the selected object. For certain types of automatisms (curtain, garage door, shutter, and gate) the configuration of the control operating mode is required:
    - **Safe Mode**  
Opening or closing is performed only while the corresponding key is pressed. To stop simply release the key.
    - **Normal Mode**  
To start the opening or closing movement, touch the corresponding key. During the movement the icon changes showing the Stop key, and indicating that the function is active. To stop the movement, click Stop.
- Click the key to configure the automatism.



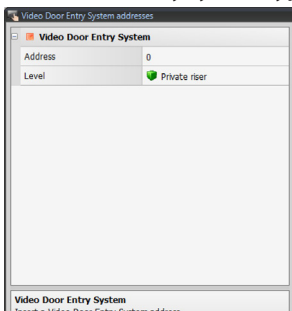
- **A = Room:** select the value corresponding to the configurator connected to A of the device to be controlled.
- **PL = Light point:** select the value corresponding to the configurator connected to PL of the device to be controlled.

- **Level:** select the level it belongs to (Private riser = level 3 or Local Bus = level 4).  
If Level = Local Bus is selected, the interface field appears.  
In this case select the logic expansion interface address where the object to control is located.

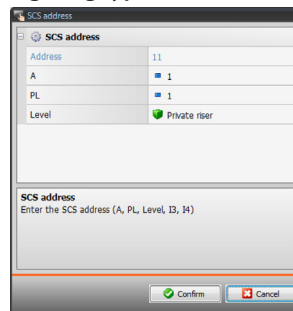


For the **Door lock** control select the video door entry system address, or the address of the entrance panel associated to the system (if the device is wired on the video door entry system); if the device is wired on the SCS BUS, for the **Door lock** control, the values A and PL must be entered.

**Video door entry system type**





**Lighting type**

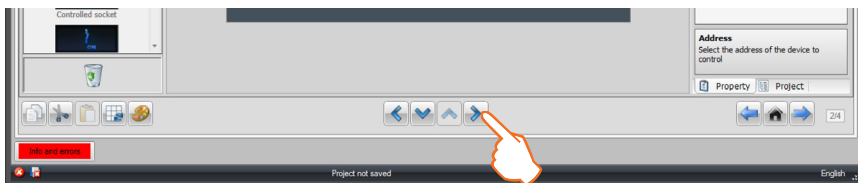


**Lighting type**

**A = Room:** select the value corresponding to the configurator connected to A on the device to control.

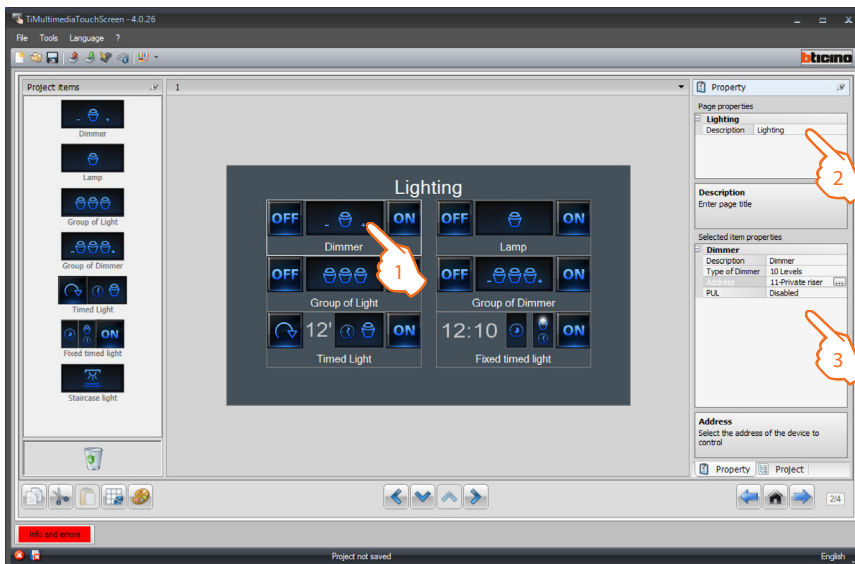
**PL = Light Point:** select the value corresponding to the configurator connected to PL on the device to control.

Once the configuration of the Automation page has been completed, click  to move to the following page, or click  to return to the previous page.



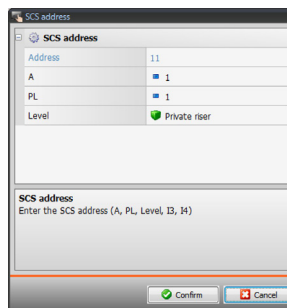
### 4.3 Lighting

Drag the objects from the “Project items” area to the “Display” area, or simply double click on the object with the mouse.



1. Select an object of the Display area.
2. A personalised description of the page can be entered in the “Page properties” area.
3. A personalised description of the selected object may be entered in the “Selected item properties” area. For some types of actuators (Lamp and Dimmer) enabling/disabling of PUL is required; select enabled if the actuator being configured is physically or virtually configured as PUL. Click  to configure the light points.

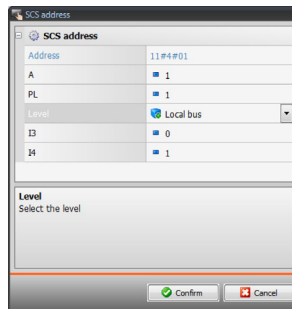
#### Configuration of Lamp, Dimmer, Timed light:



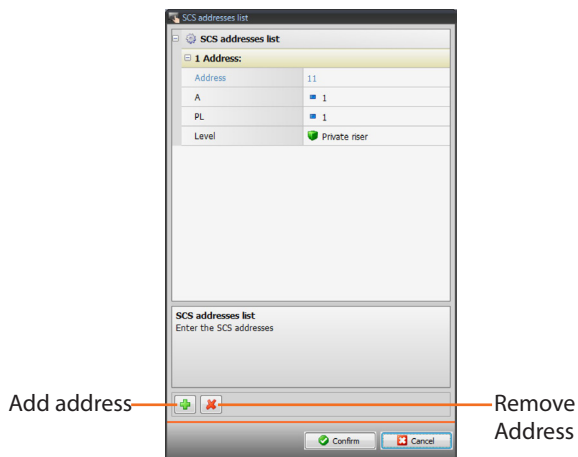
- **A = Room:** select the value corresponding to the configurator connected to **A** of the device to be controlled.
- **PL = Light point:** select the value corresponding to the configurator connected to **PL** of the device to be controlled.




- **Level:** select the level it belongs to (Private riser = level 3, or Local Bus = level 4).  
If Level = Local Bus is selected, the interface field appears.  
In this case select the logic expansion interface address where the object to control is located.



Configuration of **Light assembly, Dimmer assembly** (associating several control devices):  
This type of item can be used to control several light points at the same time, setting either point-by-point controls, or controls for light groups and rooms, or by setting a general control.

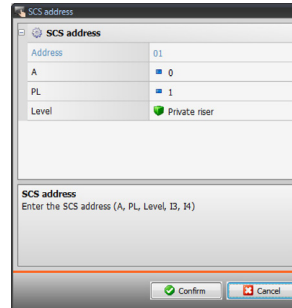


- **A = Room:** select the value corresponding to the configurator connected to **A** of the device to be controlled.
- **PL = Light point:** select the value corresponding to the configurator connected to **PL** of the device to be controlled.
- **Level:** select the level it belongs to (Private riser = level 3, or Local Bus = level 4).  
If Level = Local Bus is selected, the interface field appears.  
In this case select the logic expansion interface address where the object to control is located.

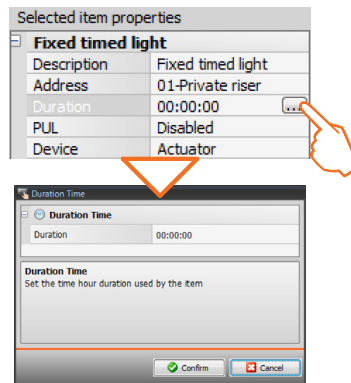
 This control may only be sent to actuators that support virtual configuration.

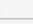
**Fixed timed light configuration:**

This type of object enables configuring a light to be controlled by a fixed switch-on delay.




- **A = Room:** select the value corresponding to the configurator connected to **A** of the device to be controlled.
- **PL = Light point:** select the value corresponding to the configurator connected to **PL** of the device to be controlled.
- **Level:** select the level it belongs to (Private riser = level 3, or Local Bus = level 4). If Level = Local Bus is selected, the interface field appears. In this case select the logic expansion interface address where the object to control is located.

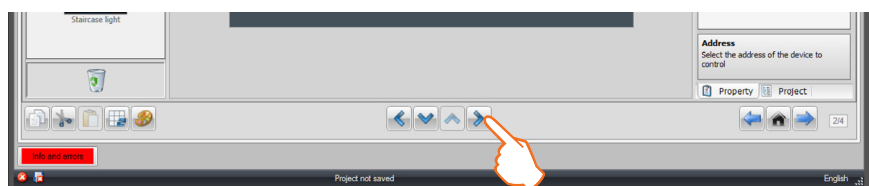


- Click  to set the switch-on time delay (Hours, Minutes, Seconds).

**Staircase light configuration:**

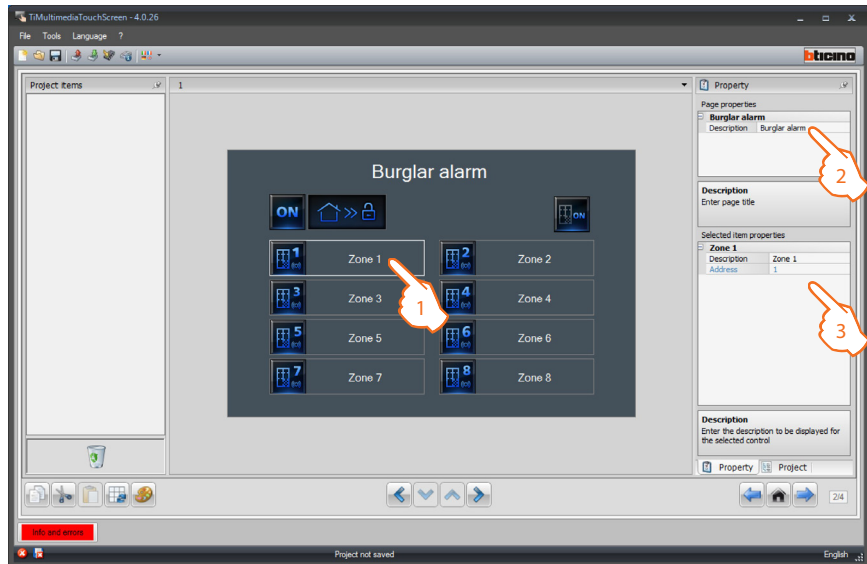
If the system is set for "Staircase light" control, when this is activated in TiMultimediaTouchScreen, it will be possible to control it from the device by selecting a customised description.

Once the lighting page configuration operation has been completed, click  to go to the following page.




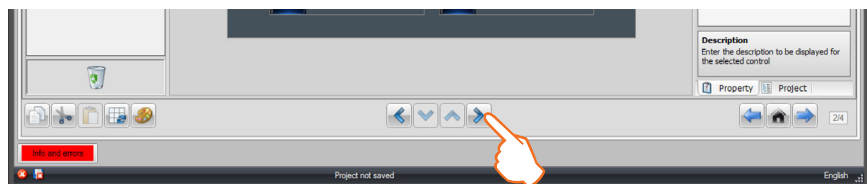
#### 4.4 Burglar alarm

Drag the objects from the "Project items" area to the "Display" area, or simply double click on the object with the mouse.



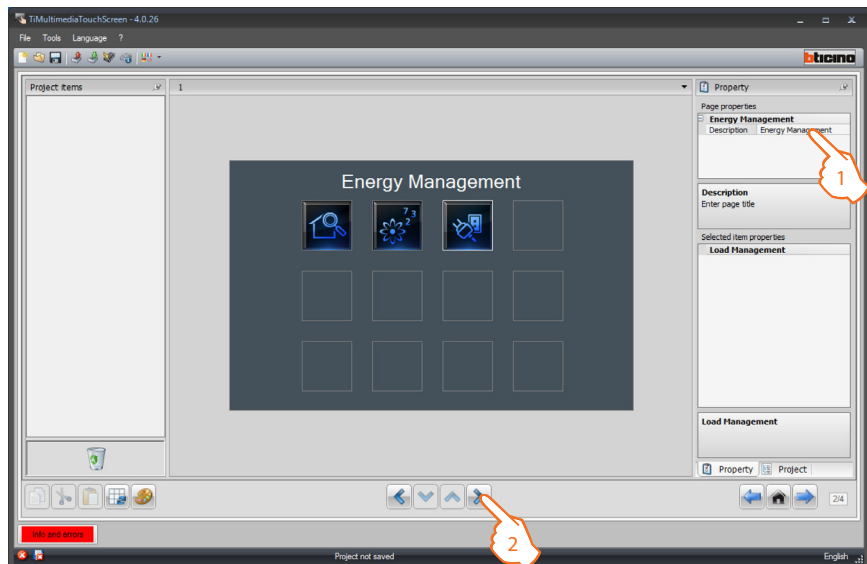
1. Select an object of the Display area.
2. A personalised description of the page can be entered in the "Page properties" area.
3. In the "Selected item properties" are it is possible to enter a customised description of the zone and select the address of the device to control.  
Up to 8 sources may be added.


Once the Burglar alarm page configuration operation has been completed, click  to go to the next page.



## 4.5 Energy Management

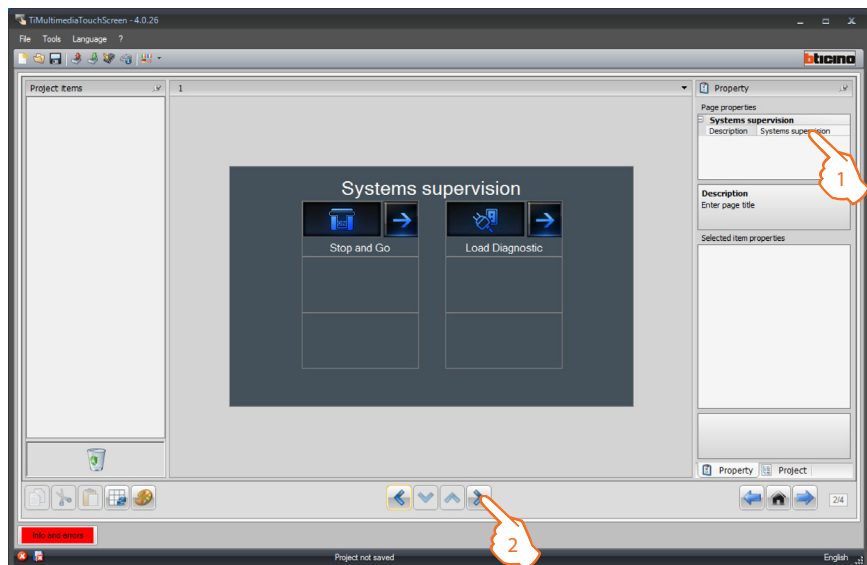
Drag the objects in the "Project items" area to the "Display" area, or simply double click the object with the mouse.




1. A personalised description of the page can be entered in the "Page properties" area.
2. Once customisation of the Energy management page has been completed, click  to go to the following page.

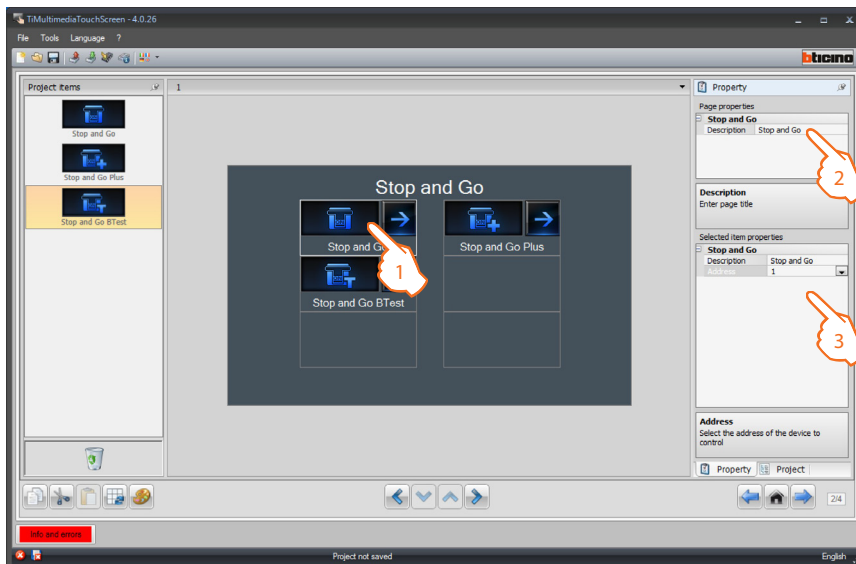
## Supervision system

Drag the objects in the "Project items" area to the "Display" area, or simply double click the object with the mouse.




1. A personalised description of the page can be entered in the "Page properties" area.
2. Once the customisation of the start page has been completed click  to access the configuration of the pages of the various objects.

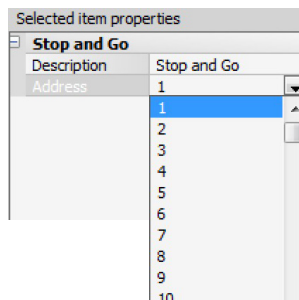
Drag the objects in the "Project items" area to the "Display" area, or simply double click the object with the mouse.




1. Select an object of the Display area.
2. A personalised description of the page can be entered in the "Page properties" area.
3. In the "Selected item properties" area the user can enter a customised description of the Stop And Go connected, and allocate the associated address to the device.


 Up to a maximum of 20 devices may be configured.

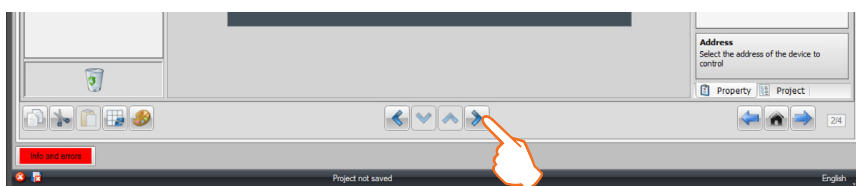
Configuration of the three devices for the supervision of the system (Stop&go, Stop&go plus and Stop&go BTest)



 The three devices have the same configuration procedures.

- **Address:** Select the device address value. The value can be between 1 and 127, and corresponds to the value of the configurators connected to the configurator socket of the device (example: for A1 = "1"; A2 = "2" and A3 = "5" corresponds address 125).

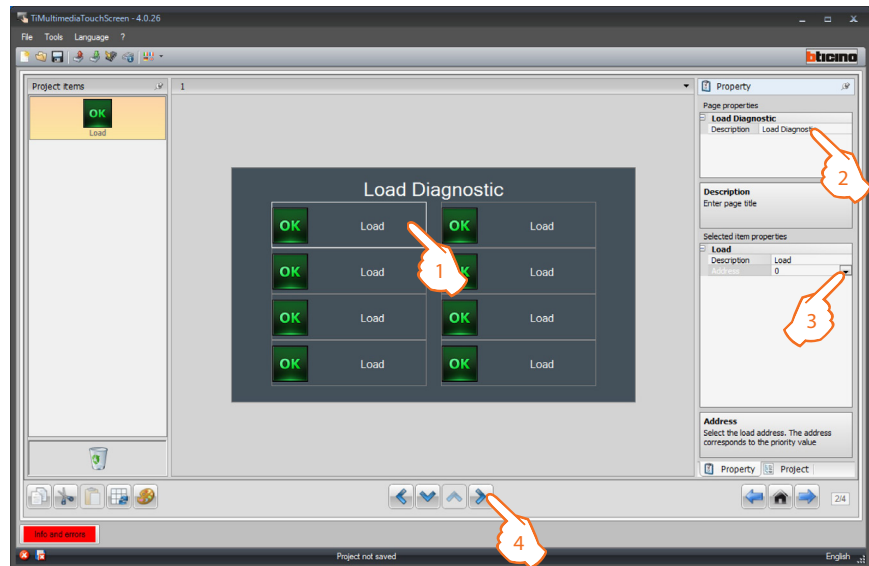
Once the Stop And Go page configuration operation has been completed, click  to go to the following page.




### Load Diagnostic configuration

The “**Load Diagnostic**” function can be used to check that the loads are working correctly, by measuring the earth leakage current absorbed by the same.

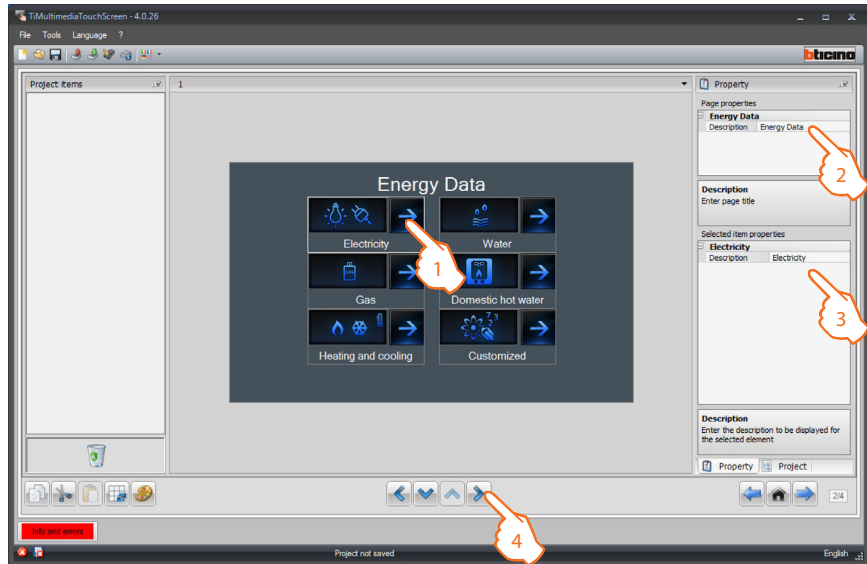
Drag the objects in the “**Project items**” area to the “**Display**” area, or simply double click the object with the mouse.




1. Select an object of the Display area.
2. A personalised description of the page can be entered in the “**Page properties**” area.
3. Enter the device address value. The value can be between 1 and 64 and corresponds to the value of the configurators connected to the configurator socket of the device.
4. Once the Load Diagnostic page configuration operation has been completed, click  to go to the following page.

### Consumption/Production display

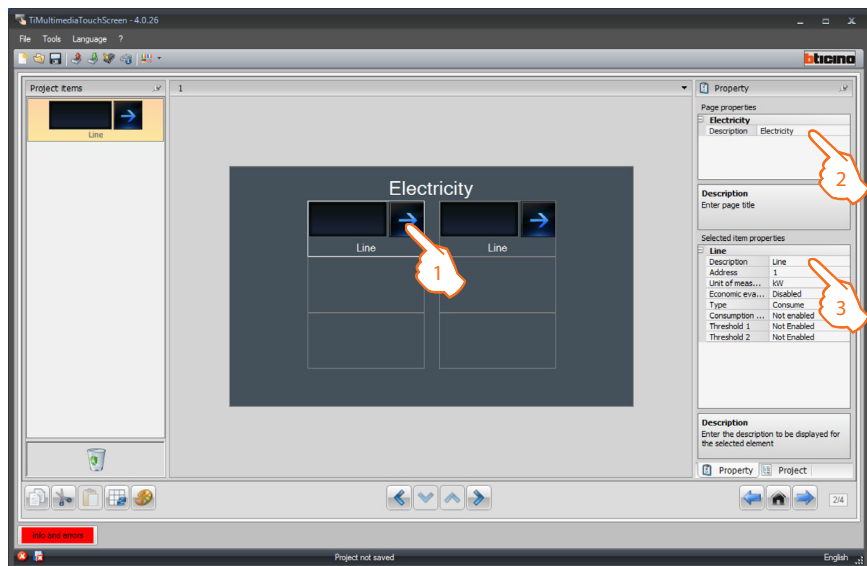
Drag the objects in the “Project items” area (ELECTRICITY, WATER, GAS, DHW (Domestic Hot Water), HEATING/COOLING and CUSTOMIZED) to the “Energy Data” area, or simply double click the object with the mouse.



1. Select an object of the Display area.
2. A personalised description of the page can be entered in the “Page properties” area.
3. Inside the “Selected item properties” area it will be possible to enter a customised description of the selected object.
4. Once the customisation of the start page has been completed, click  to access the configuration of the pages of the various objects.

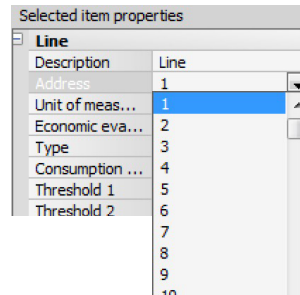
### Electricity configuration

Drag the “Line” object to the “Display” area,, or simply double click the object with the mouse (it is possible to drag up to a maximum of 20 Line objects).

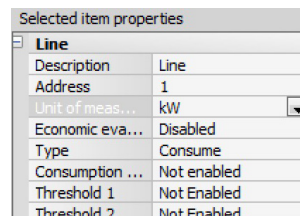


1. Select an object of the Display area.
2. A personalised description of the page can be entered in the “Page properties” area.
3. Inside the “Selected item properties” area it will be possible to enter a customised description.

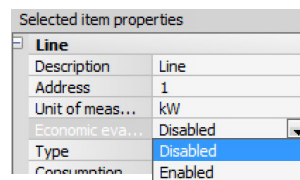
Line object configuration



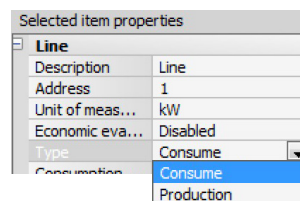
- **Address:** select the reference value between 1 and 255.



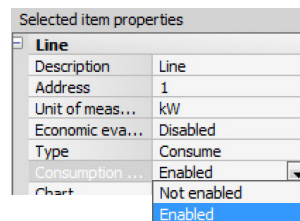
- **Unit of measurement:** enter the desired unit of measure (kW/€)



- **Economic evaluation:** enable or disable the economic evaluation of the object.

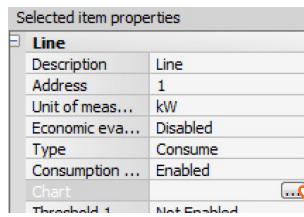


- **Type of measurement:** select the type of measurement of the consumption between Consumption and Production.

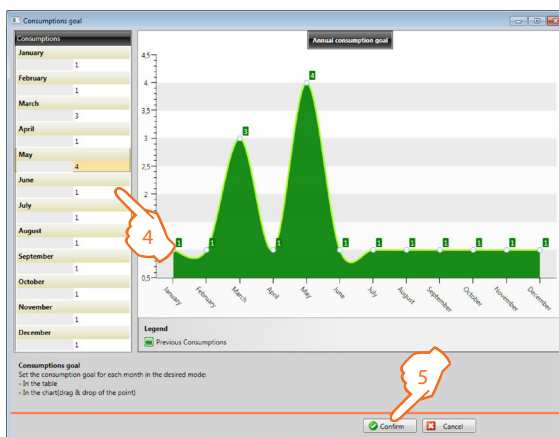


- **Target consumptions:** It gives the possibility of entering the target monthly limit value of consumptions.

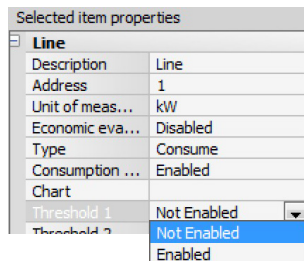




- **Chart:** Click the key to display the monthly target consumption values in a chart format.



- 4 Enter the target values for each month of the year in the table; These values will be represented in the chart on the right.
- 4 Confirm and continue with the selection of the options.

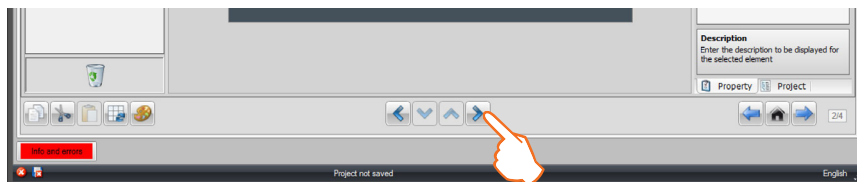


- **Threshold 1 and 2:** the user can set one or two consumption alarm thresholds; the touch screen will issue a warning when these thresholds are reached.

If "Consumption measurement" or "Production measurement" are enabled, it will be necessary to set the corresponding tariffs (see the "Currency setup" chapter).

The economic evaluation is an indicative data.

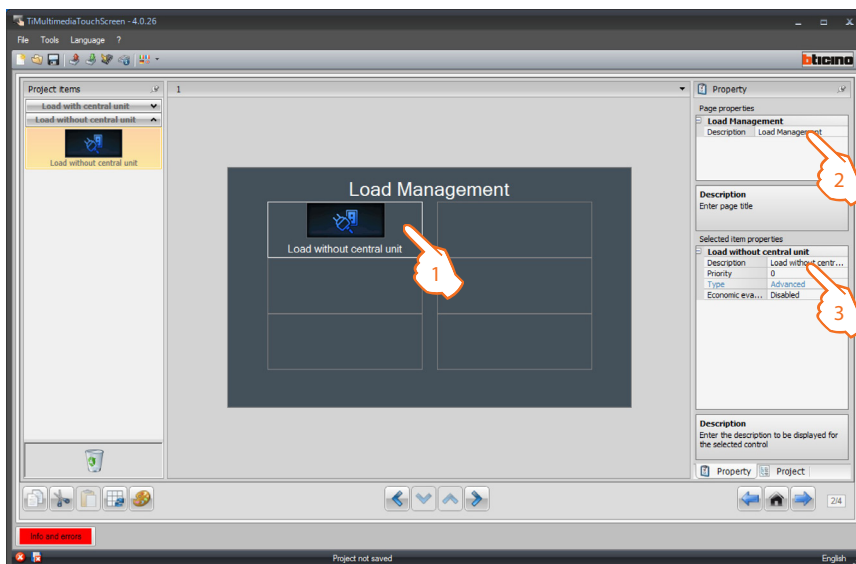
This manual only describes the display of the electricity, because TiMultimediaTouchScreen manages all values in the same way.



- Once the Consumption/Production Display page configuration operation has been completed, click to go to the following page.

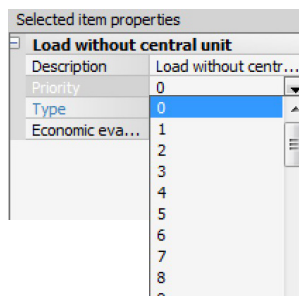
**Load management (without load management central unit installed)**

Drag the objects in the "Project items" area to the "Display" area, or simply double click the object with the mouse.

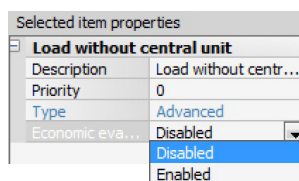


1. Select an object of the Display area.
2. A personalised description of the page can be entered in the "Page properties" area.
3. Inside the "Selected item properties" area it will be possible to enter a customised description of the selected object.

Selected load configuration (advanced actuators only):

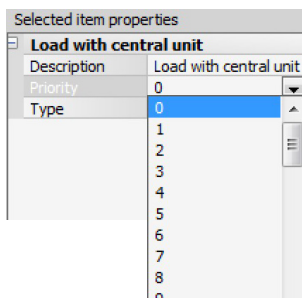


- **Priority:** select the reference value between 1 and 255.

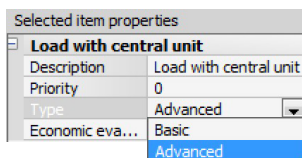


- **Economic evaluation:** Enable the economic evaluation for the displaying of the corresponding load consumptions/productions (€/kW).

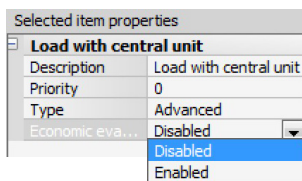
## Load management (with load management central unit installed)



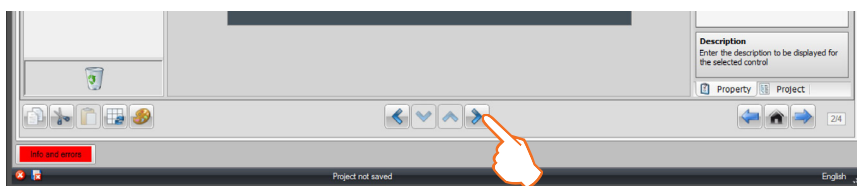
- **Priority:** select the reference value between 1 and 255.



- **Type:** select the mode, Advanced if the system includes actuators with current sensors (advanced actuators); the Touch Screen will have meters that may be reset at any time, to monitor consumption, in addition to the display of the instantaneous consumption of the load.



- **Economic evaluation:** Enable the economic evaluation for the displaying of the corresponding load consumptions/productions (€/kW).

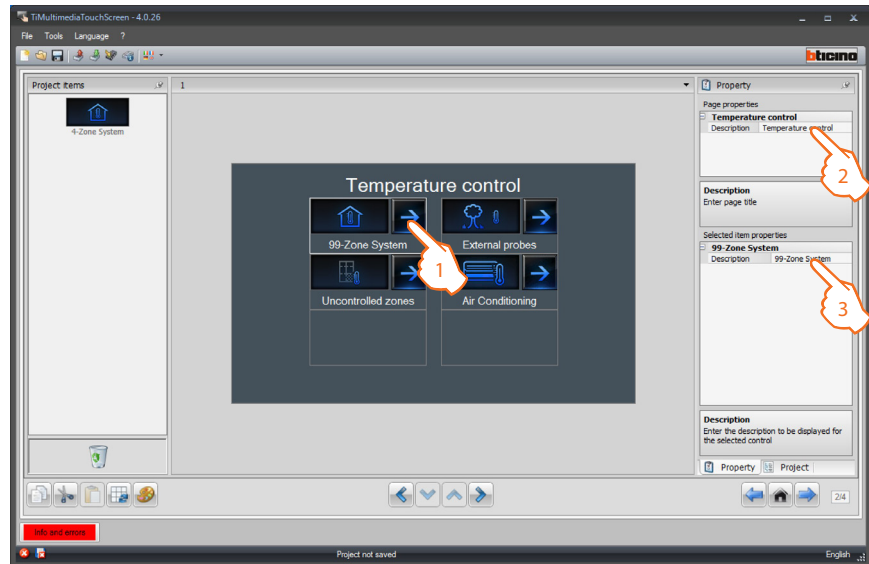


Once the Consumption/Production Display page configuration operation has been completed, click  to go to the following page.


#### 4.6 Temperature control

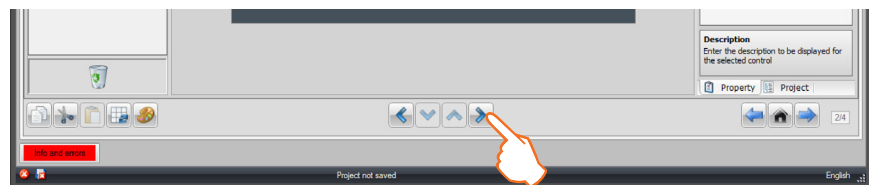
Drag the objects from the “Project items” area to the “Display” area, or simply double click on the function with the mouse.

Only one type of temperature control central unit can be entered, and only one external probe, one non-controlled zone and one air conditioning object.




1. Select an object of the Display area.
2. A personalised description of the page can be entered in the “Page properties” area.
3. A personalised description may be entered in the “Selected item properties” area.

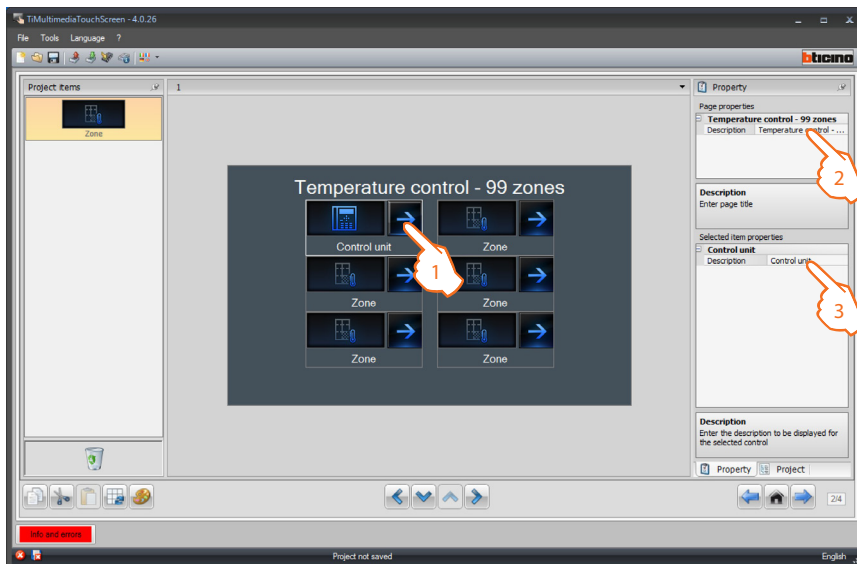
Once the initial page customisation operation has been completed click  to access the configuration of the pages for the various objects.



### Temperature control

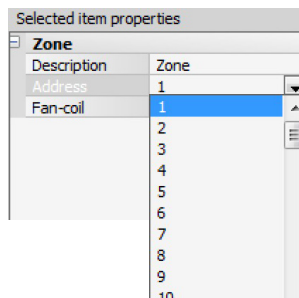
Drag the objects from the "Project items" area to the "Display" area, or simply double click on the function with the mouse.

 If the 4-zone control unit is selected, each zone will have a dedicated preset zone.

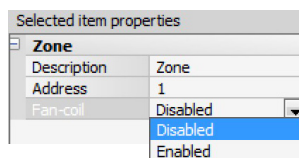


1. Select an object of the Display area.
2. A personalised description of the page can be entered in the "Page properties" area.
3. A personalised description may be entered in the "Selected item properties" area.


### Zone configuration

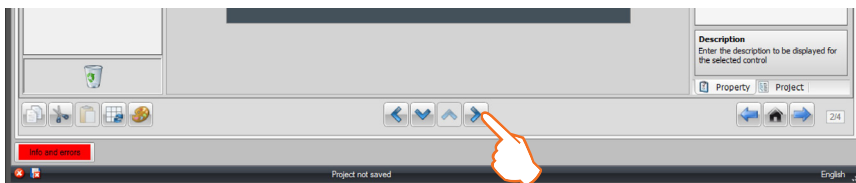



- **Address:** select the value corresponding to the configurators connected within the zones to be controlled.

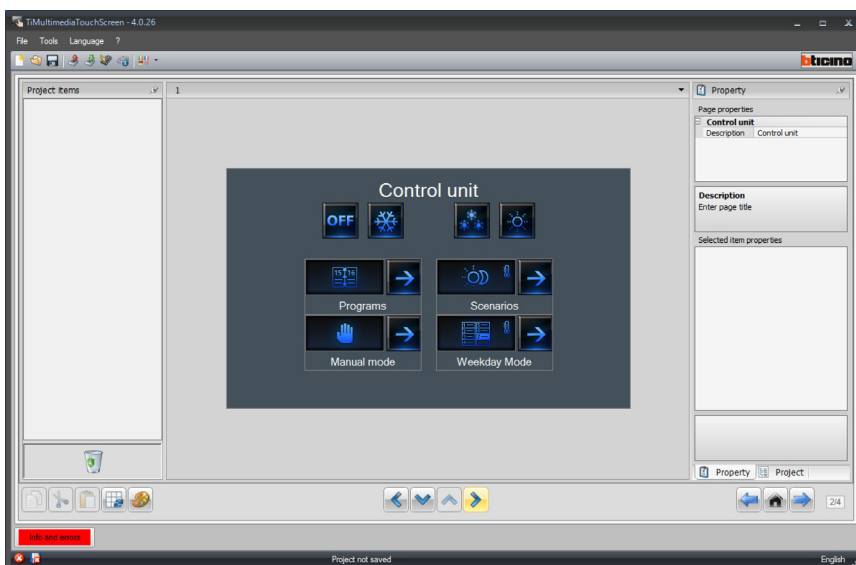


- Select if the **Fan-coil** function is enabled or disabled.

Once the configuration of the various zones has been completed, click  to go to the following page.

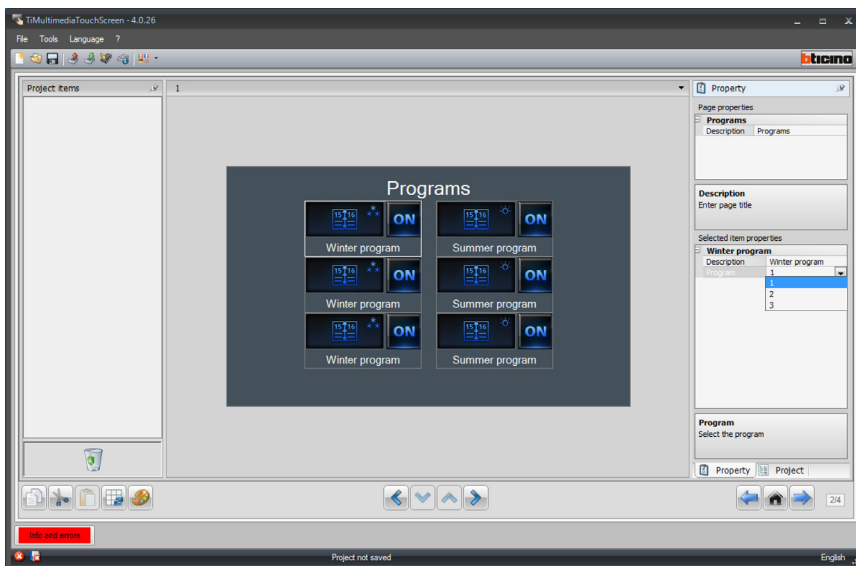



The page includes 5 programs. Based on the programming of the actual control unit it will be possible to choose which programs may be displayed on the device, and customise their description. Click  to go to the next page.

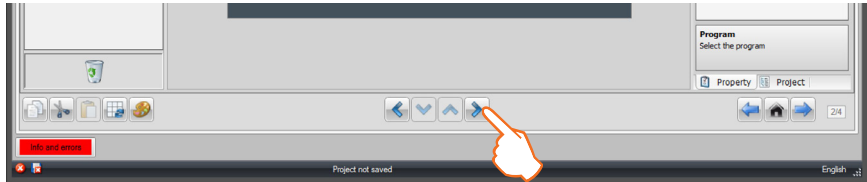


The page includes the icons for **Winter** and **Summer** programs.

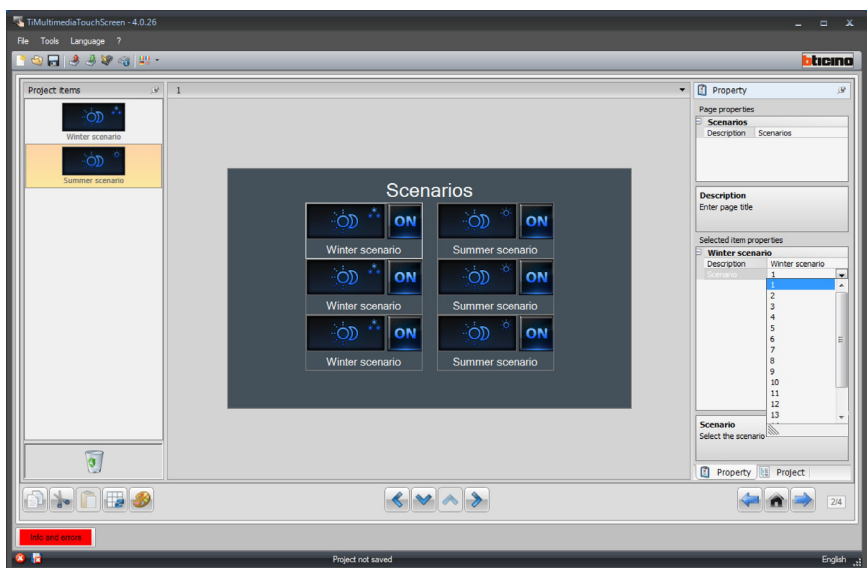
Based on the programming of the actual control unit it will be possible to choose which ones may be displayed on the device, customise the description, and associate the number of the program on the control unit.




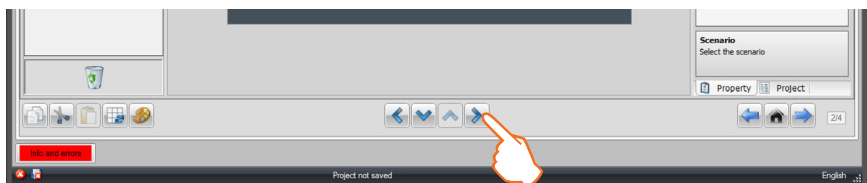
Once the configuration of the summer and winter programs has been completed, click  to go to the next page.



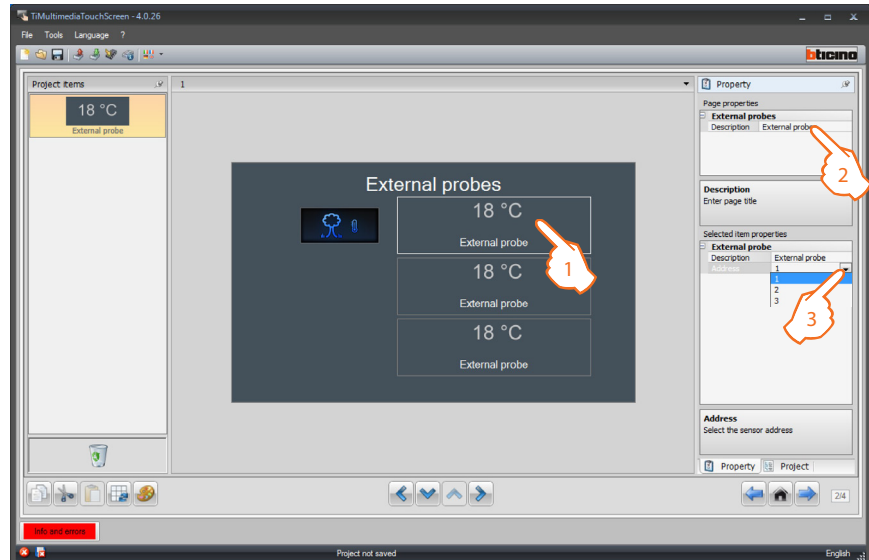
The page includes the icons for the **Winter** and **Summer** scenarios. Based on the programming of the actual control unit it will be possible to choose which ones may be displayed on the device, customise the description, and associate the number of the scenario on the control unit.




Once the configuration of the summer and winter programs has been completed, click  to go to the following page.

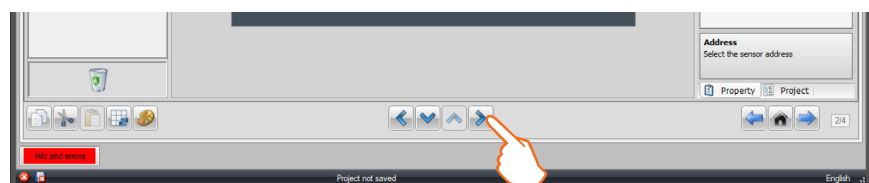


This page can be used to connect the external sensors within the system. Drag the objects from the “Project items” area to the “Display” area, or simply double click on the function with the mouse.



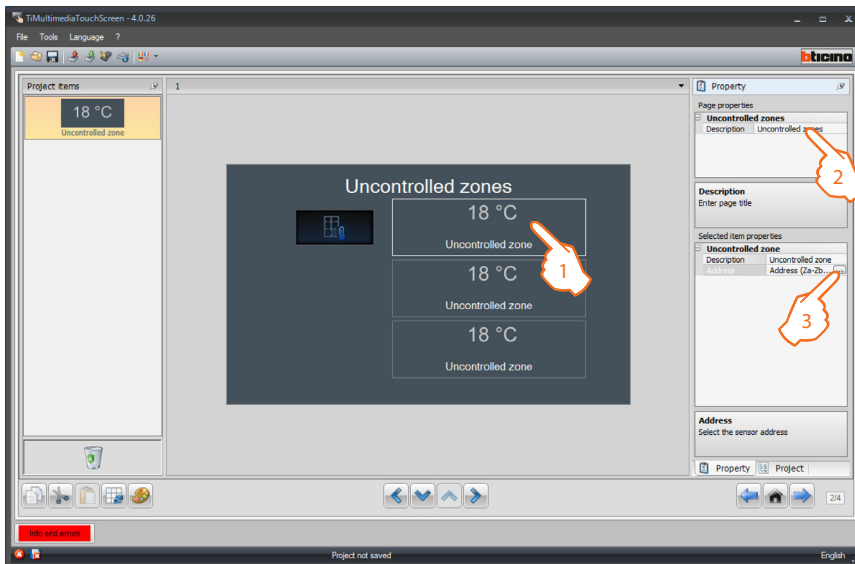
1. Select an object of the Display area.
2. A personalised description of the page can be entered in the “Page properties” area.
3. A personalised description of the selected object may be entered in the “Selected item properties” area. This area may also be used to select the address of the external sensor to be associated.

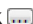
Once the configuration of the external sensors has been completed, click  to go to the next page.



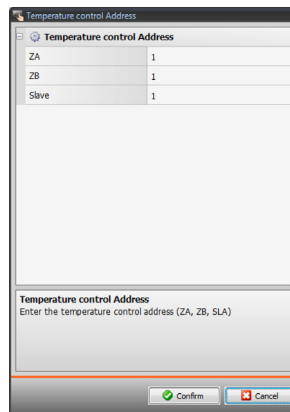


This page can be used to connect the non-controlled zones of the system. Drag the objects from the “Project items” area to the “Display” area, or simply double click on the function with the mouse.




1. Select an object of the Display area.
2. Inside the “Selected item properties” area it will be possible to enter a customised description. Click  to configure the address of the selected non-controlled zone.

### Configuration of Uncontrolled zones

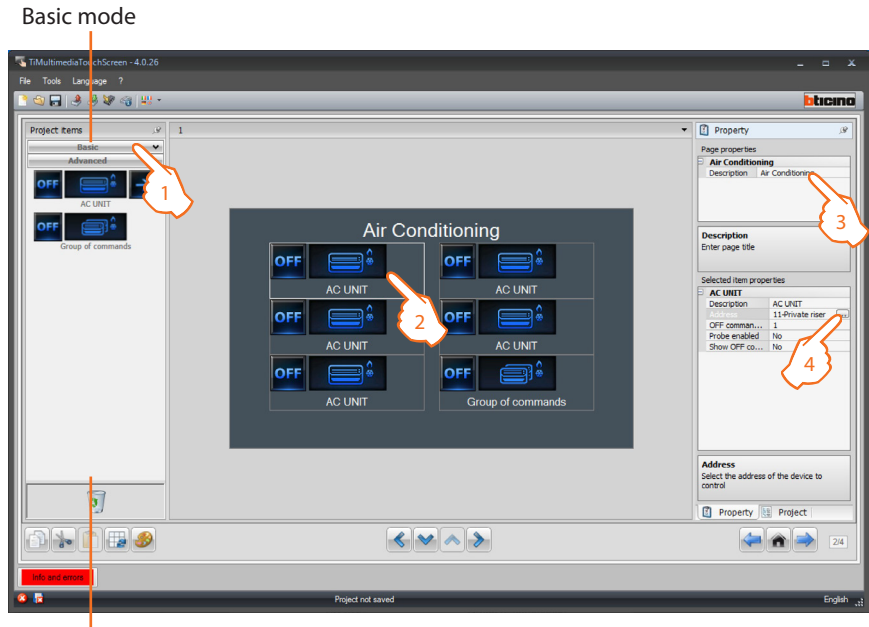


- **ZA** = Select the value corresponding to the configurator connected to ZA in the device.
- **ZB** = Select the value corresponding to the configurator connected to ZB in the device.
- **N:** = Select the value corresponding to the configurator connected to N in the device.

Once the configuration of the non-controlled zones has been completed, click  to go to the following page.

### AIR CONDITIONING configuration - basic mode

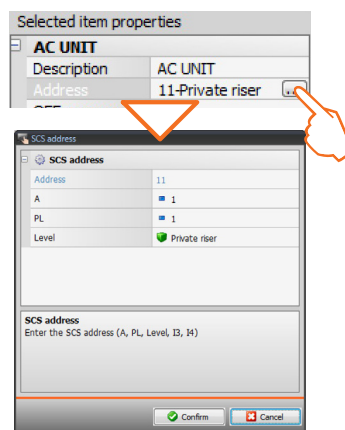
In the page it is possible to include all the AIR CONDITIONING objects installed in the system. Drag the objects in the "Project items" area to the "Display" area, or simply double click the function with the mouse.



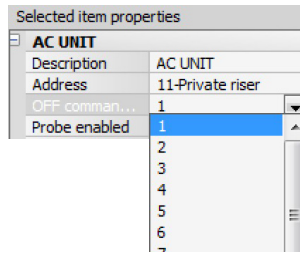
Advanced mode

1. Select the configuration mode. If the **Basic** mode is selected the air conditioning systems will be managed on the system only using the 20 commands saved on the 3456 interface.
2. Select an object of the Display area.
3. A personalised description of the page can be entered in the "Page properties" area.
4. Inside the "Selected item properties" area it will be possible to enter a customised description. Click to configure the selected splitter.

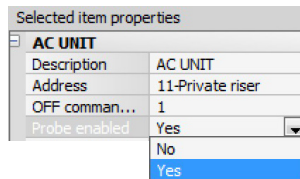
### INTERNAL AC UNIT configuration



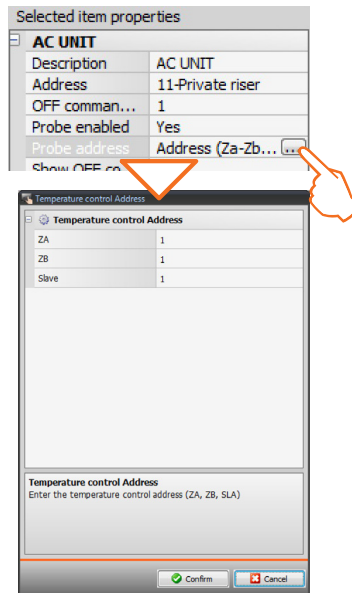
- **A = Room:** select the value corresponding to the configurator connected to **A** on the device to control.
- **PL = Light Point:** select the value corresponding to the configurator connected to **PL** on the device to control.
- **Level:** select the level the device belongs to (Private riser = level 3, or Local BUS = level 4).  
If Level = Local Bus is selected, the interface field appears.  
In this case, select the logical expansion interface for the object to control.



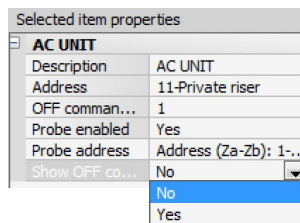
- Enter the number of the control configured as OFF on the 3456 interface;



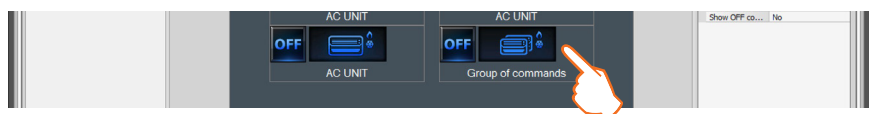
- Enable or disable the SLAVE probe;



- Click (...) to configure the address of the SLAVE probe



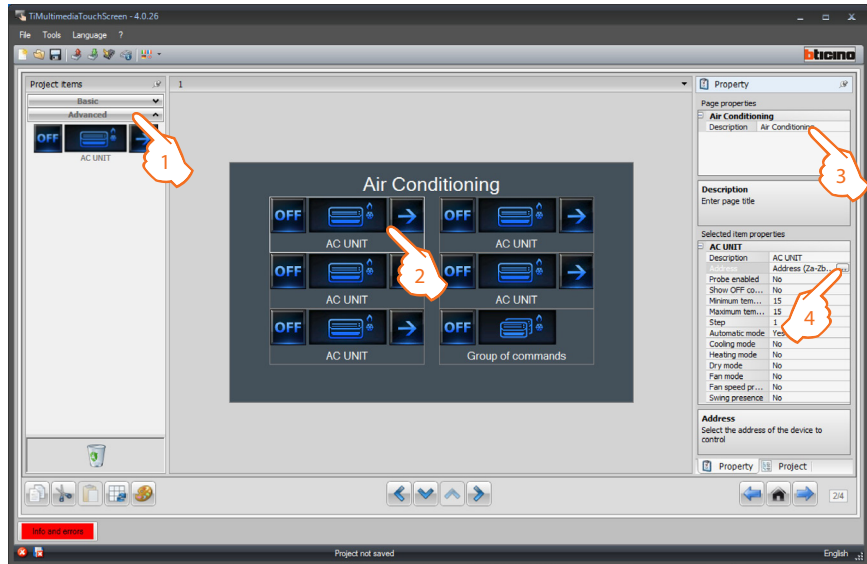
- Select Yes to display the OFF control associated to the splitter on the Multimedia Touch Screen



By dragging the "Group of commands" object to the Display area, it will be possible to customise the description in the "Selected item properties" area. This command will be displayed on the Multimedia Touch Screen and can be used to switch off all the splitters of the MY HOME system.

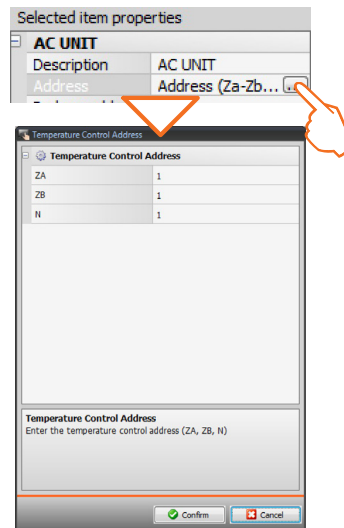
**AIR CONDITIONING configuration - advanced mode**

In the page it is possible to include all the AIR CONDITIONING objects installed in the system. Drag the objects in the "Project items" area to the "Display" area, or simply double click the function with the mouse.

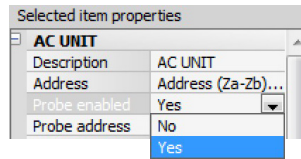


1. Select the configuration mode. When the **Advanced** mode is selected, the air conditioning systems will be managed by the MY HOME system directly as if a splitter remote control was used, or in any case using the 20 commands saved on the 3456 interface
2. Select an object of the Display area.
3. A personalised description of the page can be entered in the "Page properties" area.
4. Inside the "Selected item properties" area it will be possible to enter a customised description. Click  to configure the selected splitter.

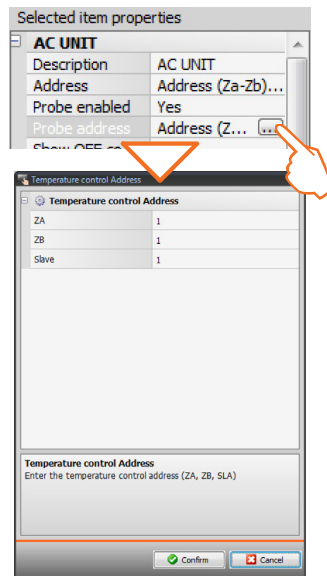
**INTERNAL AC UNIT configuration**



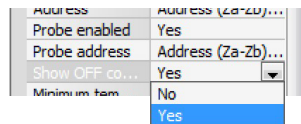
- **ZA = Zone address:** select the value corresponding to the configurator connected to ZA in the 3456 interface.
- **ZB = Zone address:** select the value corresponding to the configurator connected to ZB in the 3456 interface.
- **N:** select N entering the corresponding interface no. between 0 (none) and 9 (configurator 9).



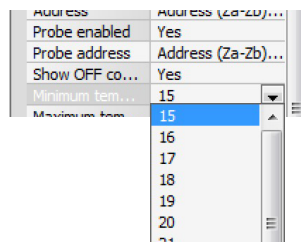
- If the SLAVE probe is present select Yes;



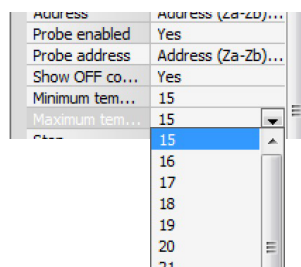
- inserire Enter the SLAVE probe address in progressive order from 1 (SLAVE 1) to 9 (SLAVE 8);



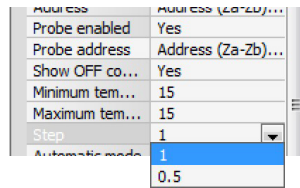
- Select Yes to display the OFF control associated to the splitter on the Multimedia Touch Screen



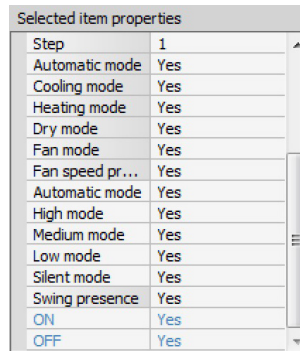
- Enter the minimum temperature for the splitter




- Enter the maximum temperature for the splitter

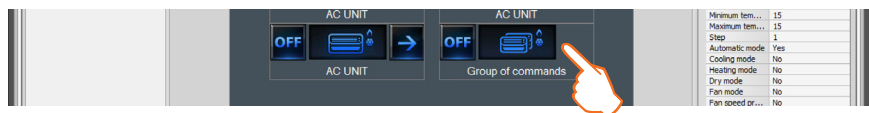


- Enter the increase step for the temperature values (0.5 °C or 1 °C)

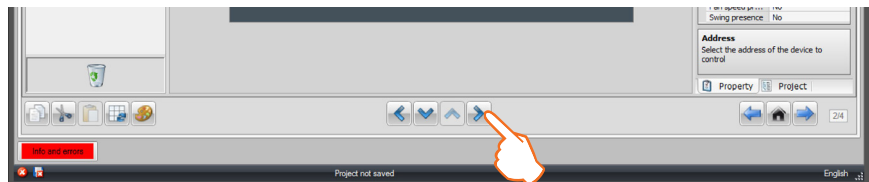



- Select Yes if the splitter is required to perform the following functions:
  - Automatic;
  - Cooling;
  - Heating;
  - De-humidifier;
  - Ventilation;
  - Fan speed presence:
    - Automatic;
    - High;
    - Medium;
    - Low;
    - Silent;
  - Swing presence

 The configuration of the splitter parameters depends on the functions of each individual splitter installed.



By dragging the “Group of commands” object to the Display area, it will be possible to customise the description in the “Selected item properties” area. This command will be displayed on the Multimedia Touch Screen and can be used to switch off all the splitters of the MY HOME system.

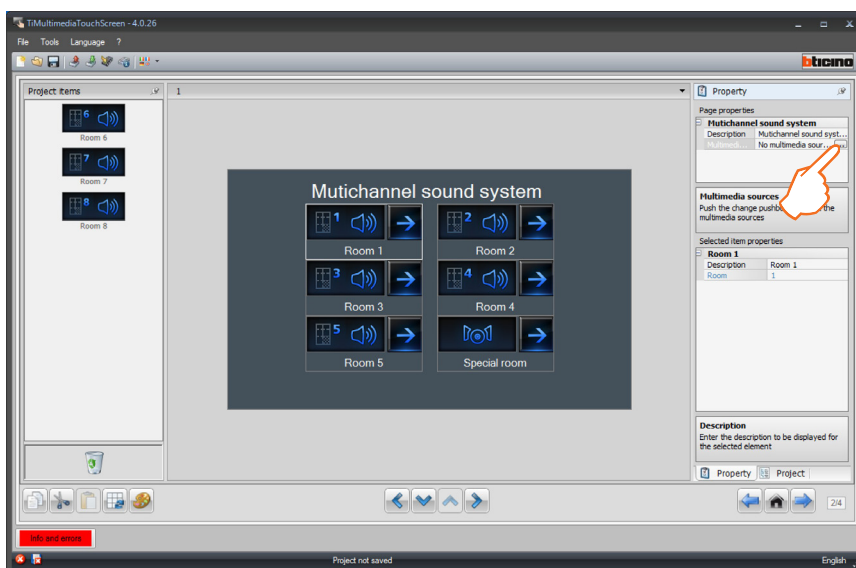


Once the Consumption/Production Display page configuration operation has been completed, click  to go to the following page.

### 4.7 Sound system

**Sound system** gives the user the possibility of selecting and broadcasting the sound on several rooms at the same time; differently from **Sound system**, **Multichannel sound system** gives the opportunity of having different music broadcasted in each room at the same time.

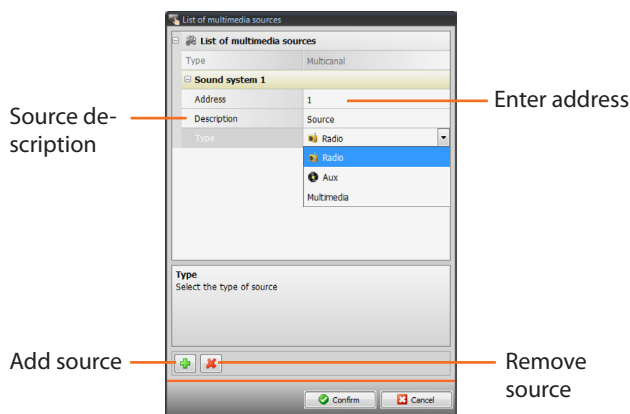
Drag an **Room** item to control one individual **Amplifier** or an **Amplifier assembly** within the room (with the same configurator in A). Drag a **Special environment** item to control an **Amplifier assembly**, either in the same or in different rooms, or to control all the amplifiers installed on the system (**general**). A personalised description of the page can be entered in the **Page properties** area; click to set the system multimedia sources (8 maximum).



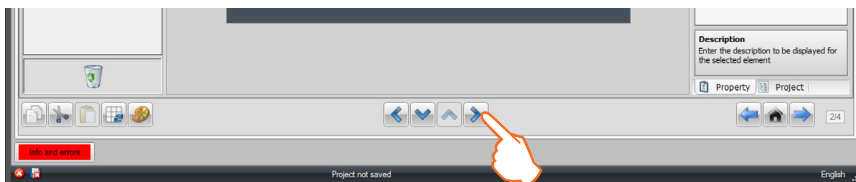
Configuration of the **List of multimedia sources**:

- Click to add a new audio source. The **Radio** source refers to the Tuner, the **Aux** source to an external source (e.g.: CD player) connected to the Stereo control, or to a RCA address. The **Multimedia** source refers to the Multimedia Touch Screen that represents the source of the system.

If Multimedia Touch Screen is used as a sound system source (see the "General Device Parameters" section), the same address may not be used for another source.

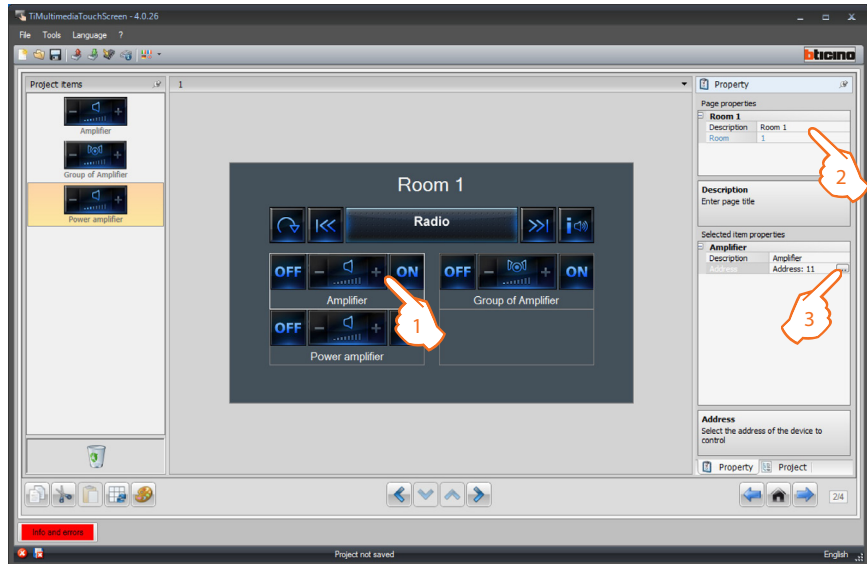


Once the audio sources have been defined, the connected rooms must be configured. Click to proceed to the configuration of the individual rooms and the special room.

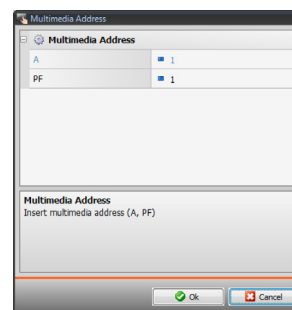


**Room configuration:**

Drag the objects from the “Project items” area to the “Display” area, or simply double click on the object with the mouse.



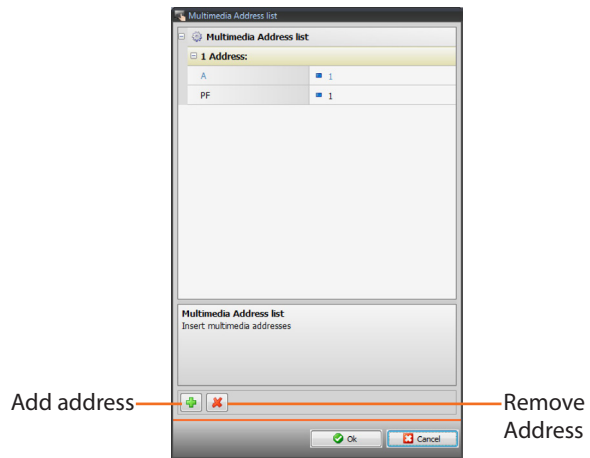
1. Select an object of the Display area.
2. A personalised description of the page can be entered in the “Page properties” area.
3. In the “Selected item properties” area click  to set the address of the amplifier selected.



- **PF = Loudspeaker:** select the value corresponding to the configurator connected to PF of the device to be controlled.

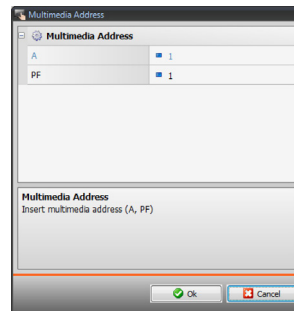


Amplifier assembly configuration:

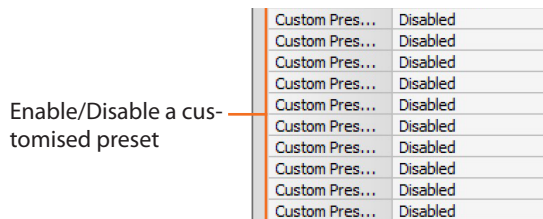



- **PF = Loudspeaker:** select the value corresponding to the configurator connected to PF of the device to be controlled.

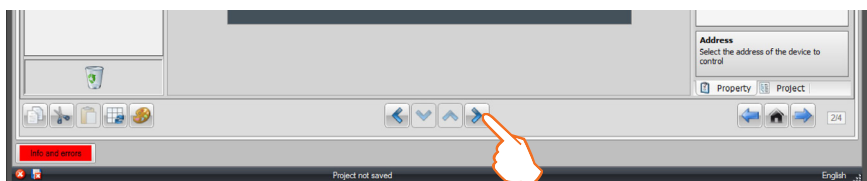
Power amplifier configuration



- **PF = Speaker point:** select the value corresponding to the configurator connected to PF on the device to control.

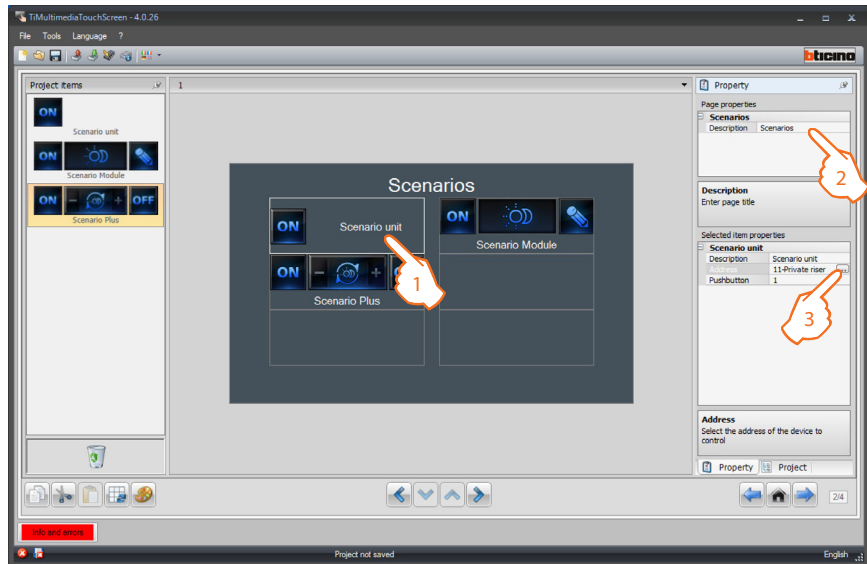


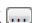
Once the sound system page configuration operation has been completed, click  to go to the next page.



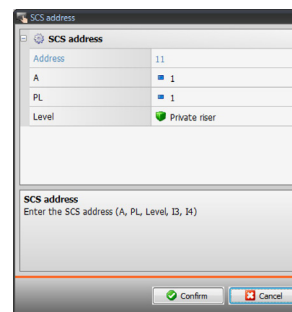
### 4.8 Scenarios

Drag the objects from the "Project items" area to the "Display" area, or simply double click on the object with the mouse.



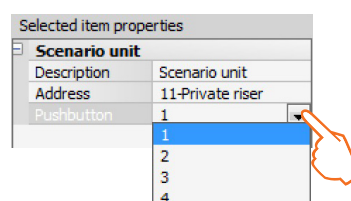
1. Select an object of the Display area.
2. A personalised description of the page can be entered in the "Page properties" area.
3. A personalised description of the selected object may be entered in the "Selected item properties" area.  
Click  to configure the scenario (scenario module address).

Scenario configuration:

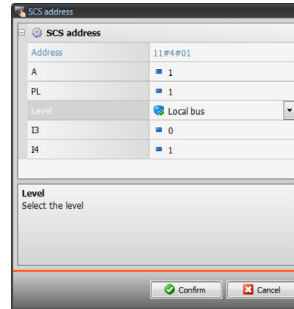


- **A = Room:** select the value corresponding to the configurator connected to A of the device to be controlled.
- **PL = Light point:** select the value corresponding to the configurator connected to PL of the device to be controlled.


**Pushbutton:** select the number corresponding to the pushbutton



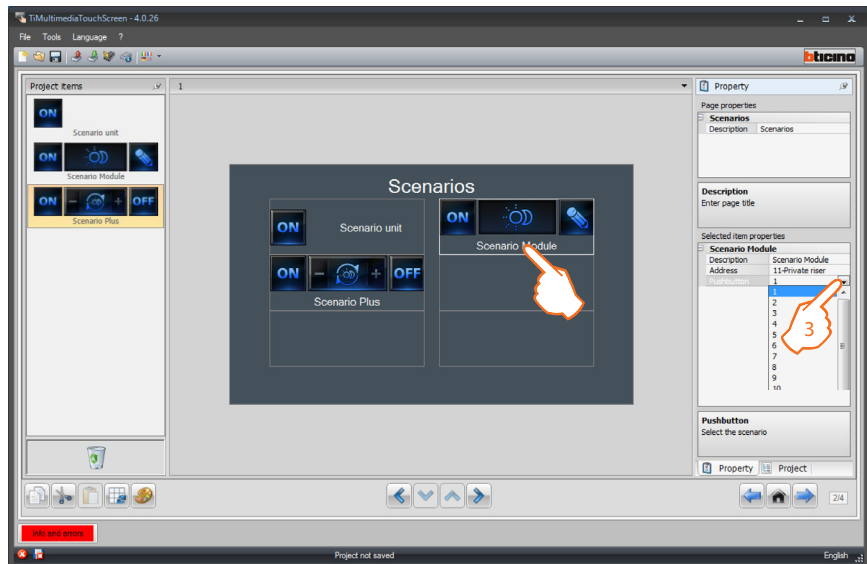
- **Level:** select the level it belongs to (Private riser = level 3, or Local Bus = level 4).  
If Level = Local Bus is selected, the interface field appears.  
In this case select the logic expansion interface address where the object to control is located.



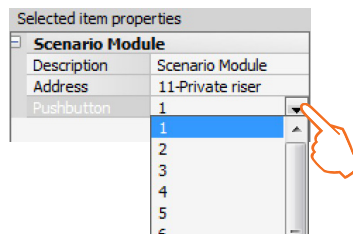
**Scenario configuration (Scenario module):**

 The scenario module may be used to save up to 16 scenarios


- After configuring the address select the corresponding one in the scenario module, among the suggested ones.

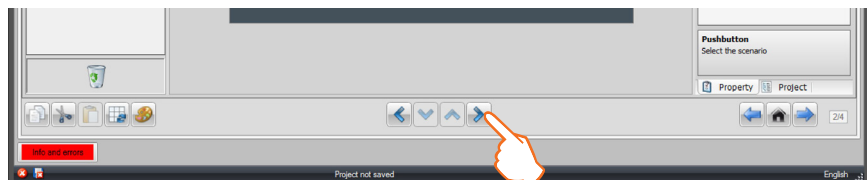


**Scenario Plus configuration**



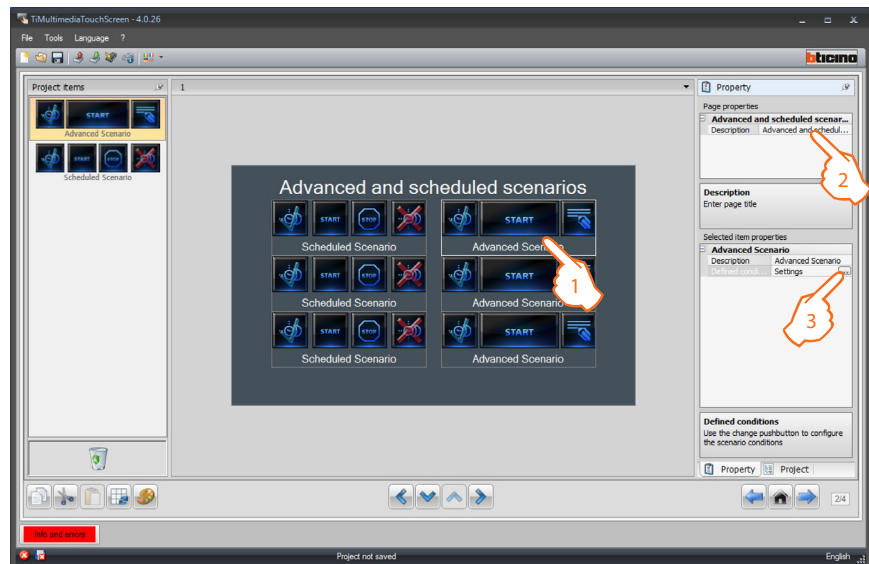
enter the address number of the Scenario PLUS

Once the scenario page configuration operation has been completed, click  to go to the following page.



#### 4.9 Improved scenarios and schedulers

Drag the objects from the “Project items” area to the “Display” area, or simply double click on the object with the mouse.



1. Select an object of the Display area.
2. A personalised description of the page can be entered in the “Page properties” area.
3. A personalised description of the selected object may be entered in the “Selected item properties” area.

#### Advanced scenario configuration:


The “Advanced scenarios” object enables to create a conditioned control. The condition must be defined (hours, minute).

It is not necessary to set the Device Condition  
If set, this may be referred to:

- a Light actuator
- a 10 Dimmer
- a 100 Dimmer
- una Temperature control (of controlled zone, external sensor or non-controlled zone)
- an Amplifier
- an Auxiliary device

**Example of advanced scenario:**

if at 20:00 (**time condition**), the amplifier configured with A1 LS1 is off (**device condition**), an on control is sent to the amplifier configured as A1 LS1 (**OPEN control**).


1. Click  to access the configuration of an advanced scenario.

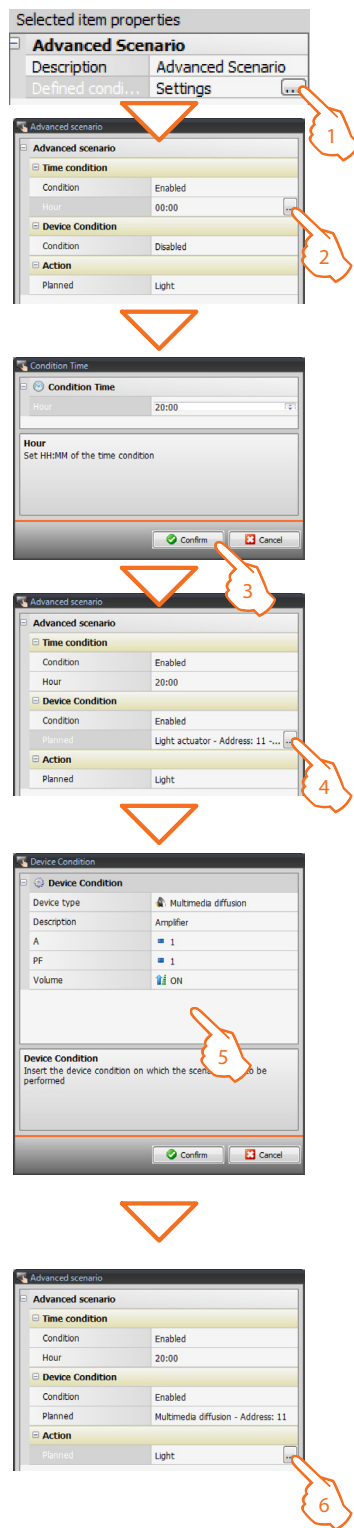
2. Click  to set the **Time Condition** (if present).

3. Select the time interval (hours and minutes).

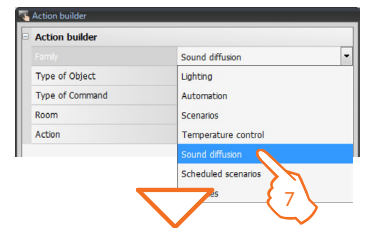
4. Click  to set the **Device Condition** (if present).

5. Select the Device Type and enter a customised description.  
**A = Room:** select the value corresponding to the configurator connected to A of the device to be controlled.  
**PF = Loudspeaker:** select the value corresponding to the configurator connected to PF of the device to be controlled.  
**Level:** select the level it belongs to (Private riser = level 3, or Local Bus = level 4).  
 If Level = Local Bus is selected, the interface field appears. In this case select the logic expansion interface address where the object to control is located.  
 Now select the device status (**ON** or **OFF**).

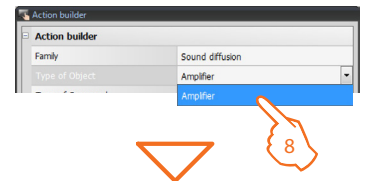
6. Click  to set the control that will be generated when the previous conditions occur.



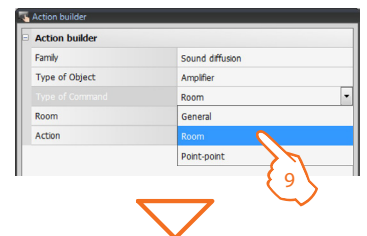
**7.** Generate the OPEN control.  
Select the family the control that will be generated belongs to.



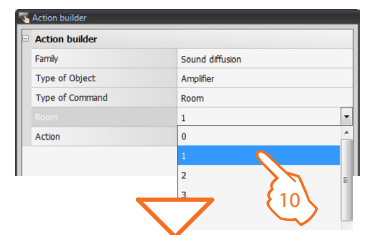
**8.** Select the type of object.



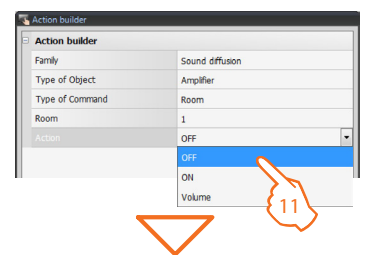
**9.** Select the type of control to send to the object.



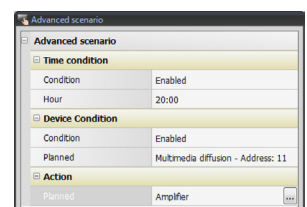
**10.** Configure the object address.



**11.** Select the action to send to the object



**12.** The OPEN control has been correctly created.



**Scheduled scenario configuration:**

The “Scheduled scenario” object enables control of a programmed scenario of the Scenario Programming device.

It is possible to simulate CEN type controls configured in the scenario.

The four possible actions are:

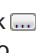

- **Start**
- **Stop**
- **Enable**
- **Disable**

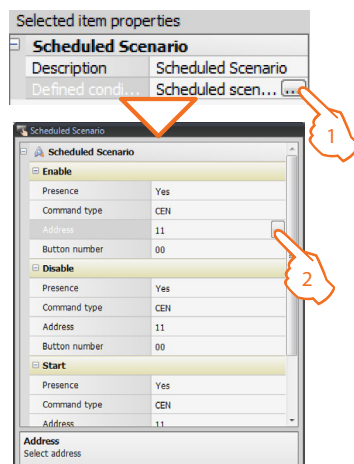
The **Start** and **Stop** commands are start/stop conditions of the scenario.

The **Enable** and **Disable** controls may be configured in pairs. They enable activation/deactivation of the control without starting it.

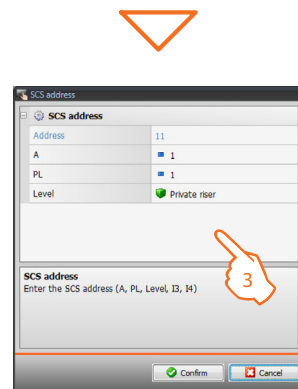
If a forwarding condition occurs, the actions of the scenario will be performed.

All Enable, Disable, **Start** and **Stop** commands must correspond to the same ones set in the scenario as specified in the Scenario Programmer.

1. Click  to access the configuration of a scheduled scenario.
2. Click  to set the SCS address of the object.

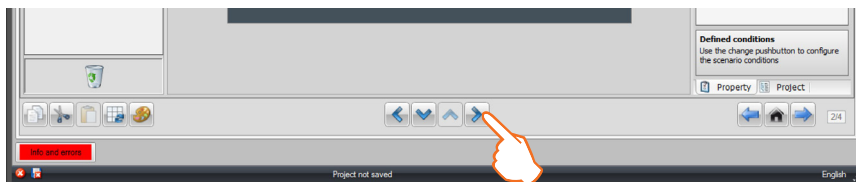


3. Select the Device Type and enter a customised description.  
**A = Room:** select the value corresponding to the configurator connected to **A** of the device to be controlled.  
**PL = Light Point:** select the value corresponding to the configurator connected to **PL** of the device to be controlled.  
**Level:** select the level it belongs to (Private riser = level 3, or Local Bus = level 4).  
 If Level = Local Bus is selected, the interface field appears. In this case select the logic expansion interface address where the object to control is located.



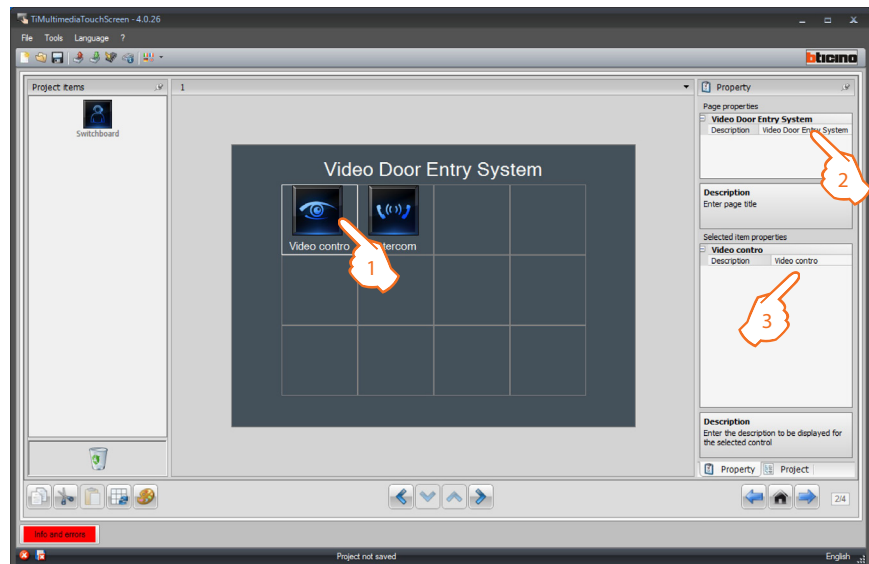
Repeat the same operations for the **Stop, Activate/Deactivate** conditions.

Once the “Improved scenarios and schedulers” page configuration operation has been completed, click  to go to the next page.




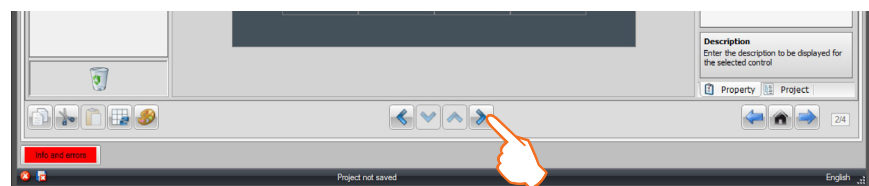
#### 4.10 Video door entry system

Drag the objects from the “Project items” area to the “Display” area, or simply double click on the object with the mouse.



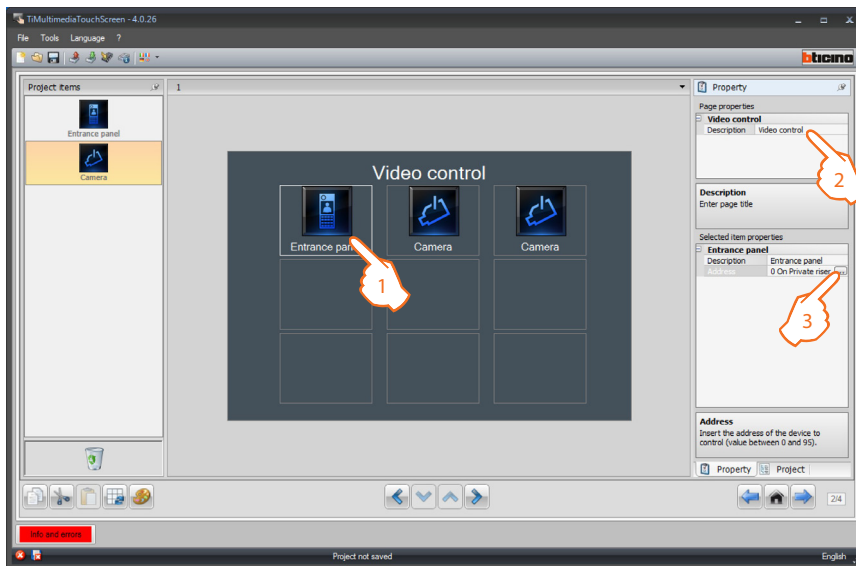
1. Select an object of the Display area:
  - CCTV (Video control);
  - Intercom;
  - Call exclusion.
2. A personalised description of the page can be entered in the “Page properties” area.
3. A personalised description of the selected object may be entered in the “Selected item properties” area.

Once the customising operation has been completed, click  to go to the page for the configurations of each individual object connected to the video door entry system page.



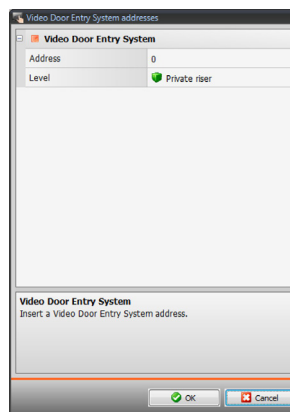


**CCTV (Video control)**



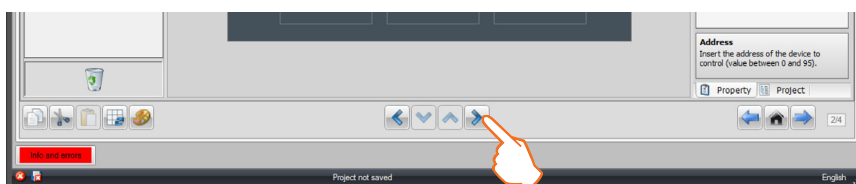
1. Select an object of the Display area.
2. A personalised description of the page can be entered in the “Page properties” area.
3. A personalised description of the selected object may be entered in the “Selected item properties” area.  
Click to configure the “Entrance Panel/Camera” object.

**Entrance Panel/Camera configuration:**

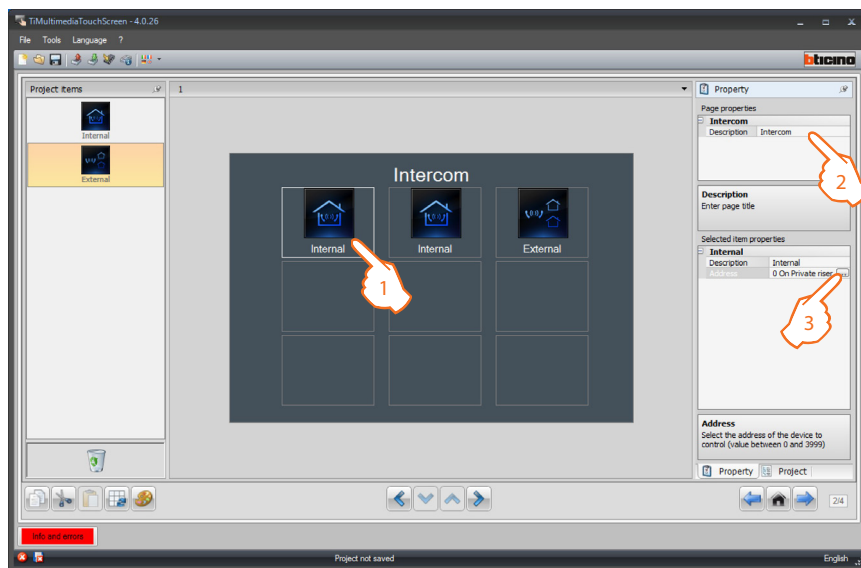


- Select the address corresponding to the configurator connected to the device to be controlled.


Once the CCTV page configuration has been completed, click to go to the next page.

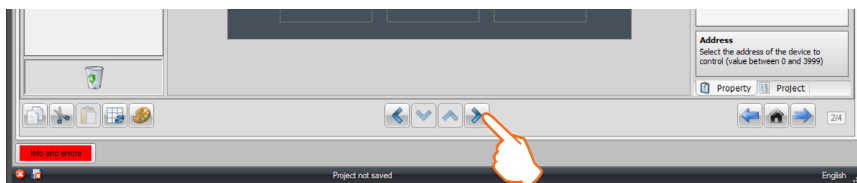


## Intercommunicating (internal or external)



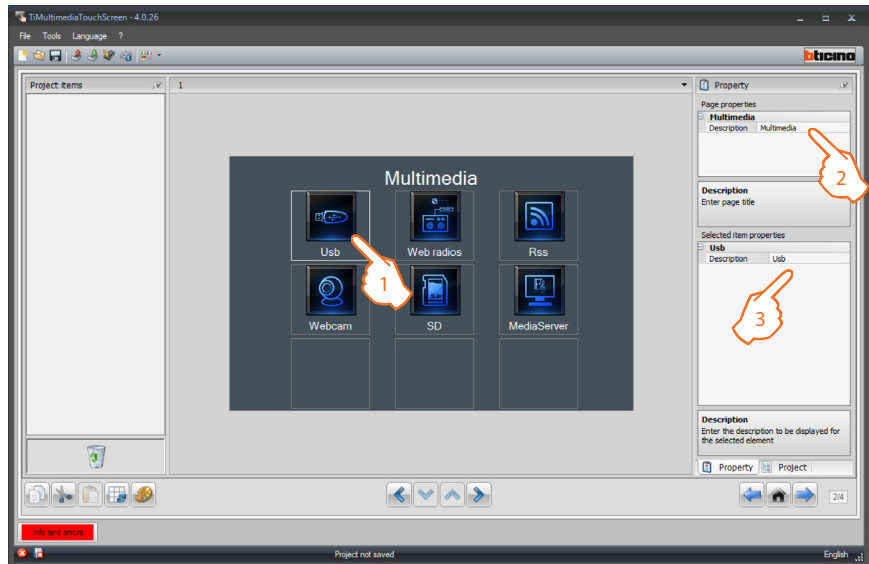
1. Select an object of the Display area.
2. A personalised description of the page can be entered in the **“Page properties”** area.
3. A personalised description of the selected object may be entered in the **“Selected item properties”** area, and the address of the handset to call (from 1 to 3999) may be entered.

Once the Intercom page configuration operation has been completed, click  to go to the next page.





### 4.11 Multimedia

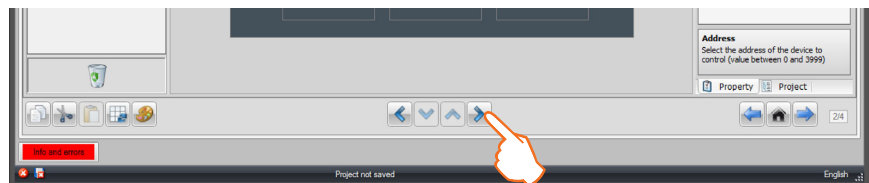
Drag the objects from the “Project items” area to the “Display” area, or simply double click on the object with the mouse.



1. Select an object of the Display area:
2. A personalised description of the page can be entered in the “Page properties” area.
3. A personalised description of the selected object may be entered in the “Selected item properties” area.

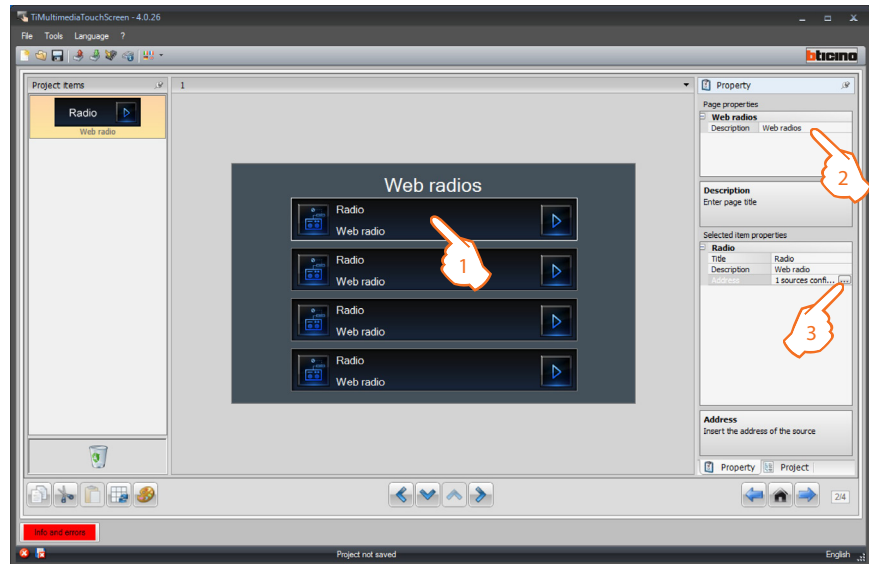
 USB and SD objects do not need configuration.

Once the customisation operation has been completed, click  to go to the page for the configuration of each individual object of the Multimedia page.



**Web radio**

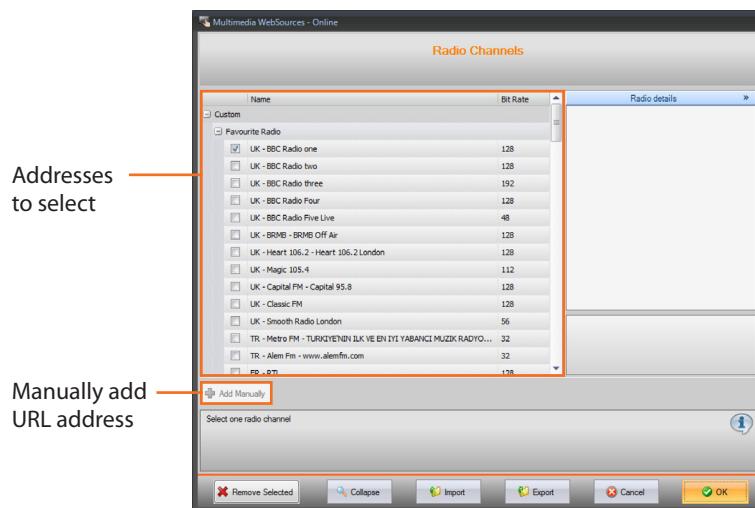
Drag the “Web radio” object in the “Project items” area to the “Display” area, or simply double click on the object with the mouse.



1. Select an object of the Display area:
2. A personalised description of the page can be entered in the “Page properties” area.
3. A personalised description of the selected object may be entered in the “Selected item properties” area.  
Click to configure the “Web radio” object.

**Configure the Web radio Address:**

TiMultimediaTouchScreen offers a library of preset addresses divided into categories (Pop, Rock, Disco etc.); To associate an address to the select Web radio click the .

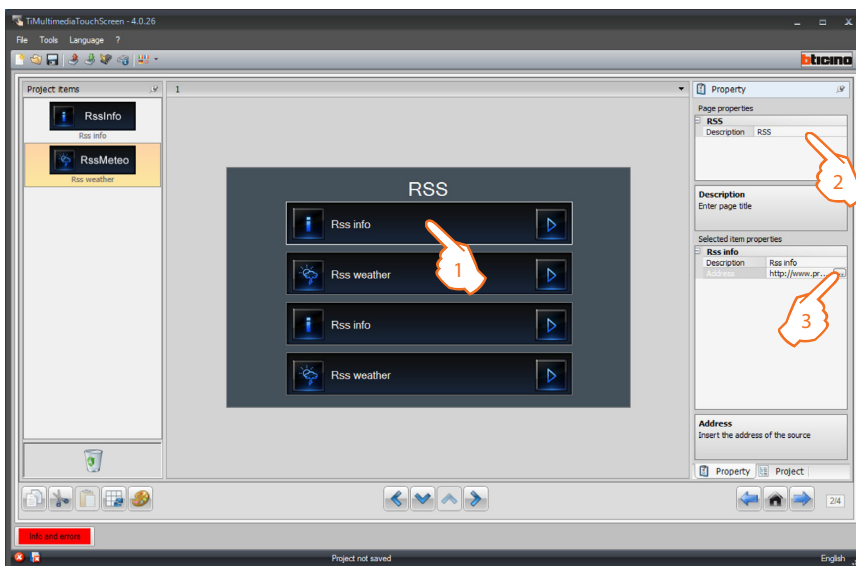


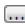
The URL address is not the browser address of the WEB page of the radio.

Once the Web radio configuration operation has been completed, click to go to the following page.

## RSS

Drag the objects from the “Project items” area to the “Display” area, or simply double click on the object with the mouse.

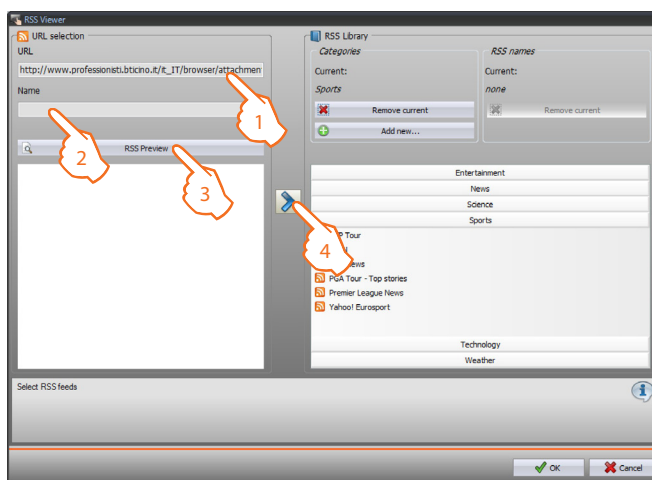



1. Select an object of the Display area:
2. A personalised description of the page can be entered in the “Page properties” area.
3. A personalised description of the selected object may be entered in the “Selected item properties” area.  
Click  to configure the “RSS info/RSS weather” object.

### RSS address configuration:

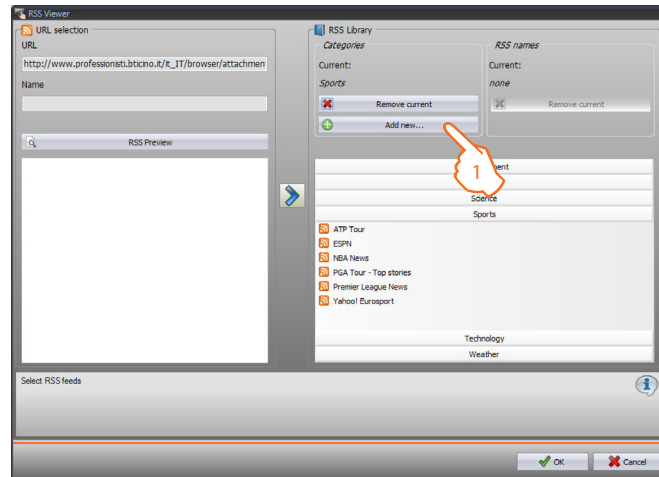
TiMultimediaTouchScreen offers a library of preset addresses divided into categories (entertainment, news, sciences, sport, technology, weather); in addition to these addresses, new ones may be added by adding new categories.

### Create a new address

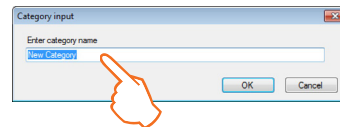


1. Enter a new address (URL).
2. Enter a customised description for the address created.
3. Display a preview of the RSS address created.
4. Click  to move the address to the selected category.

## Create a category

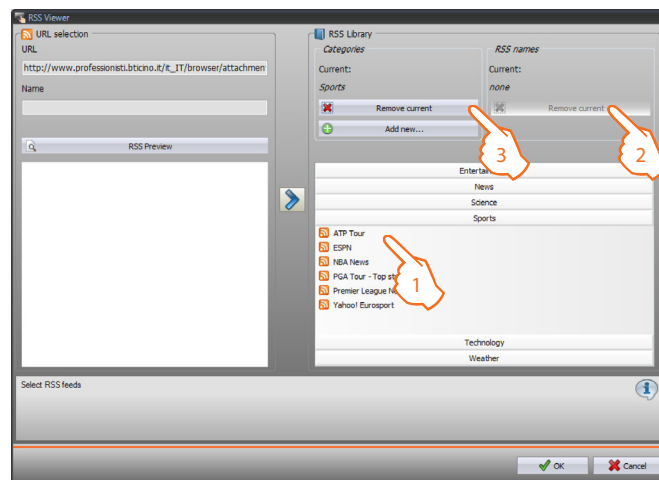


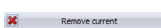
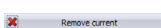
1. Click  to enter a new customised category..




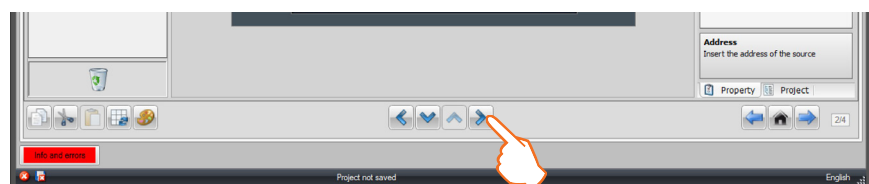
Enter a name for the category created.

## Remove an address or a category



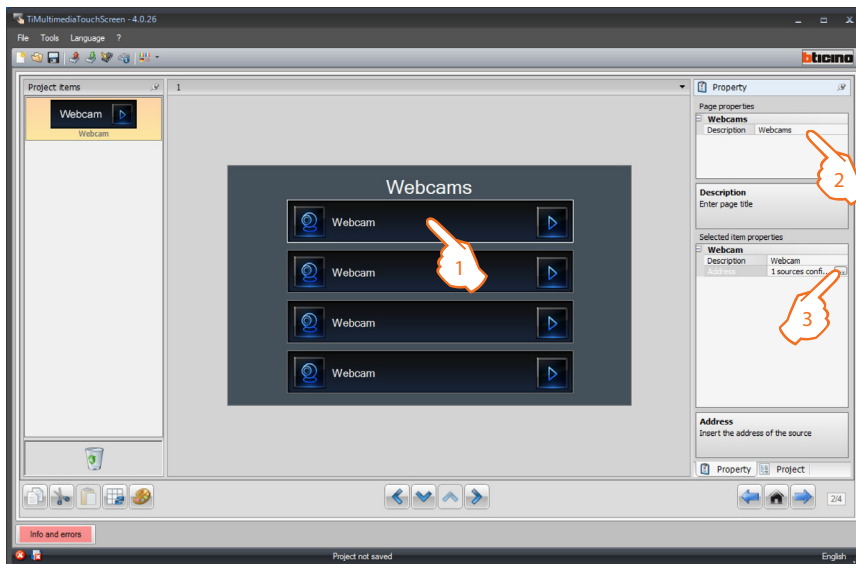
1. Select an address or a category.
2. Click  to remove the selected address.
3. Click  to remove the selected category.

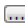
Once the RSS page configuration operation has been completed, click  to go to the next page.



### Webcam

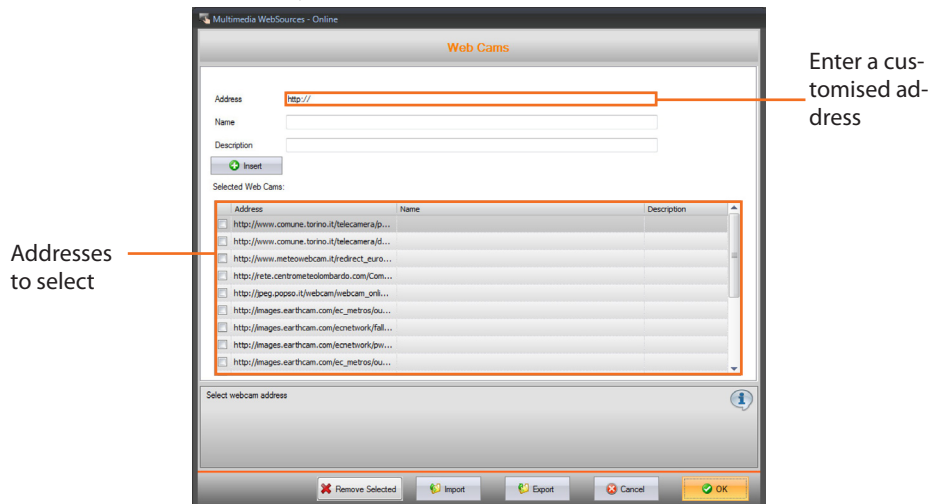
Drag the “Webcam” object in the “Project items” area to the “Display” area, or simply double click on the object with the mouse.




1. Select an object of the Display area:
2. A personalised description of the page can be entered in the “Page properties” area.
3. A personalised description of the selected object may be entered in the “Selected item properties” area.  
Click  to configure the “Webcam” object.

### Configuration of the Webcam Address:

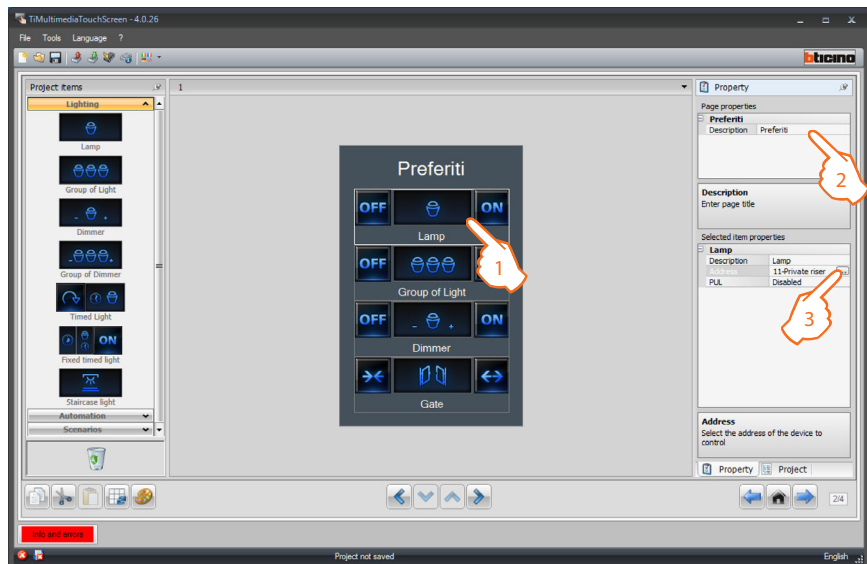
TiMultimediaTouchScreen offers a library of preset addresses divided into categories (entertainment, news, sciences, sport, technology, weather);




Once the Web radio page configuration operation has been completed, click  to go to the next page.

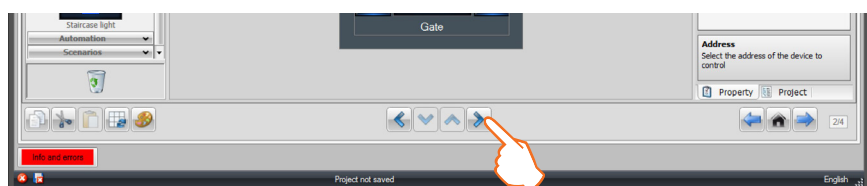
### 4.12 Favourites

Drag the objects from the “Project items” area to the “Display” area, or simply double click on the object with the mouse.




1. Select an object of the Display area:
2. A personalised description of the page can be entered in the “Page properties” area.
3. A personalised description of the selected object may be entered in the “Selected item properties” area. For some types of actuators (Lamp and Dimmer) enabling/disabling of PUL is required; select enabled if the actuator being configured is physically or virtually configured as PUL. Click  to configure the automatism (see the “Lighting” section).

Once customisation and configuration of the favourite page has been completed, click  to go to the next page.

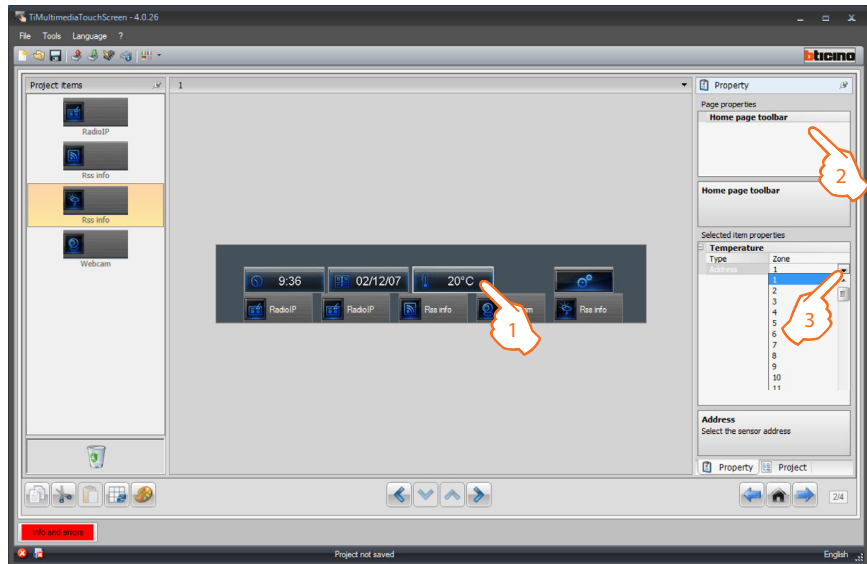





 The "Settings" object is always present in the Home Page and cannot be deleted.

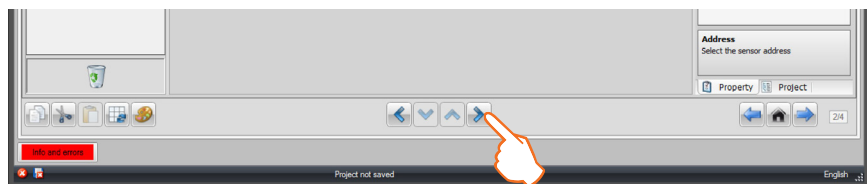
### 4.13 Home page toolbar

Drag the objects from the "Project items" area to the "Display" area, or simply double click on the object with the mouse.



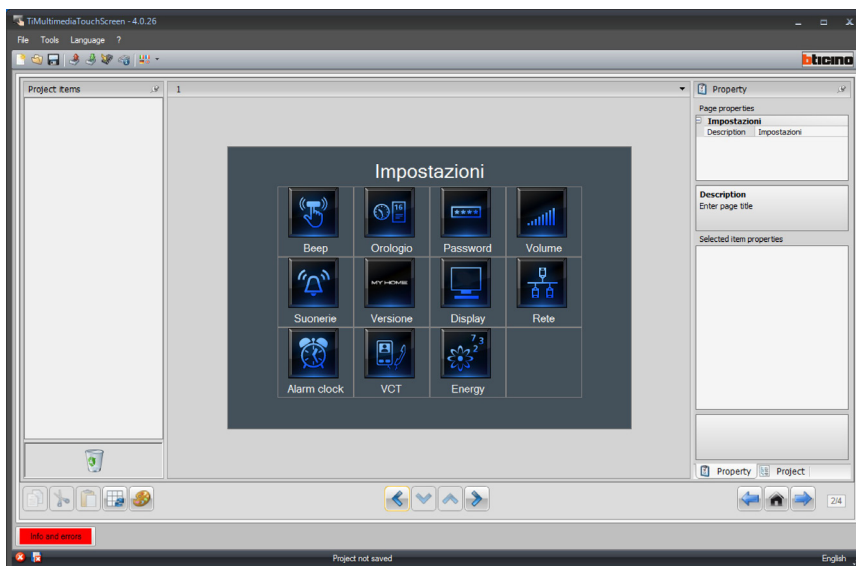
1. Select an object of the Display area:
2. A personalised description of the page can be entered in the "Page properties" area.
3. The selected object may be configured in the "Selected item properties" area;  
**Example:** to display the temperature of one of the zone of the system directly on the Home Page enter the zone address; enter the address of a Web Radio or a Webcam to set a direct connection from the Home Page.

Once the customisation and configuration of the toolbar Home Page has been completed, click  to go to the next page.

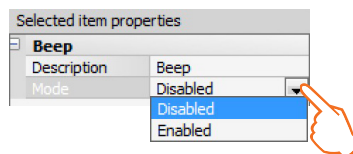


### 4.14 Settings

Drag the objects from the “Project items” area to the “Display” area, or simply double click on the object with the mouse.



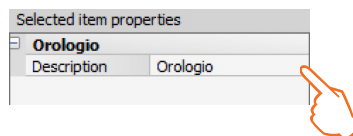
**Beep configuration:**



It gives the possibility to enter a customised description of the **Beep** object, and **Enable** or **Disable** the sound emitted when Touch Screen is used.



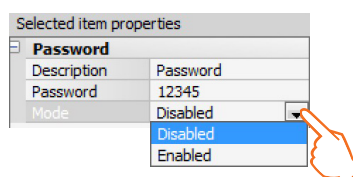
**Date and time configuration:**



It gives the possibility to enter a customised description of the **Date and time** object.



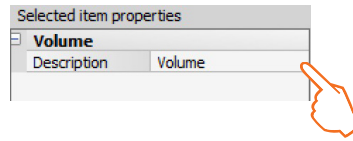
**Password Configuration:**



It gives the possibility to enter a customised description of the **Password** object, and to enter a preferred numerical password, which can then be disabled or enabled.



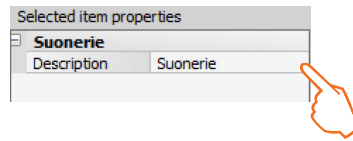
**Volume** configuration:



It enables entering a customised description of the **Volume** object.



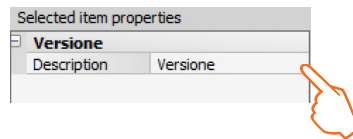
**Ringtones** configuration:



It enables entering a customised description of the **Ringtones** object. .



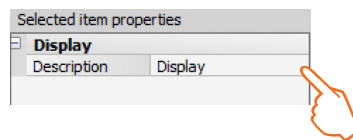
**Version** configuration:



It enables entering a customised description of the **Version** object.



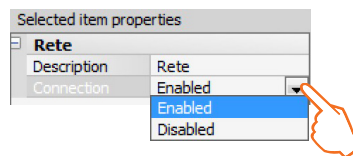
**Display** configuration:



It enables entering a customised description of the **Display** object.



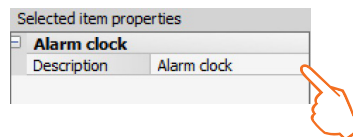
**Network** configuration:



It enables enabling/disabling and entering a customised description of the **Network** object.



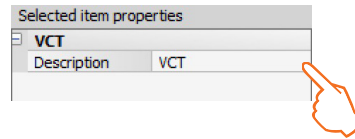
**Alarm clock** configuration:



It enables entering a customised description of the **Alarm clock** object.



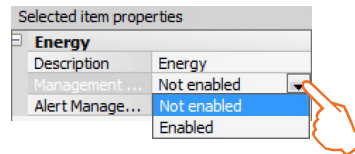
**Video door entry system configuration:**



It enables entering a customised description of the **Video door entry system** object.

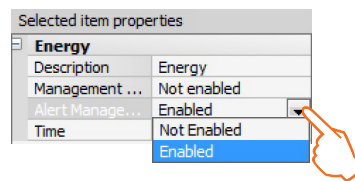


**Energy configuration:**



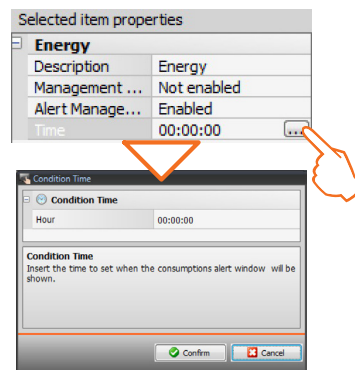
**Threshold warning beep management:**

it can be used to enter a customised description of the **Energy** object, and to enable or disable the threshold warning beep management, so that when the energy consumption thresholds are exceeded, an audible signal is emitted by Multimedia Touch Screen.



**Alert management:**

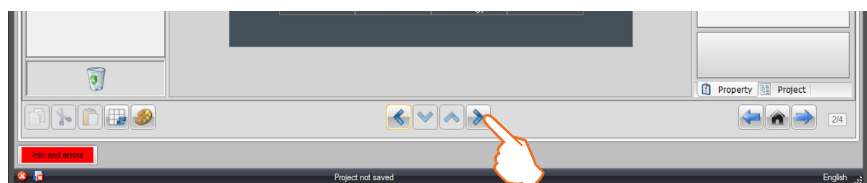
to enable or disable the alert management function. When enabled, on the first day of each month Touch Screen will display a window showing the consumptions of the previous month.



**Time:**

enter the time you wish the consumption trend warning window to be displayed.

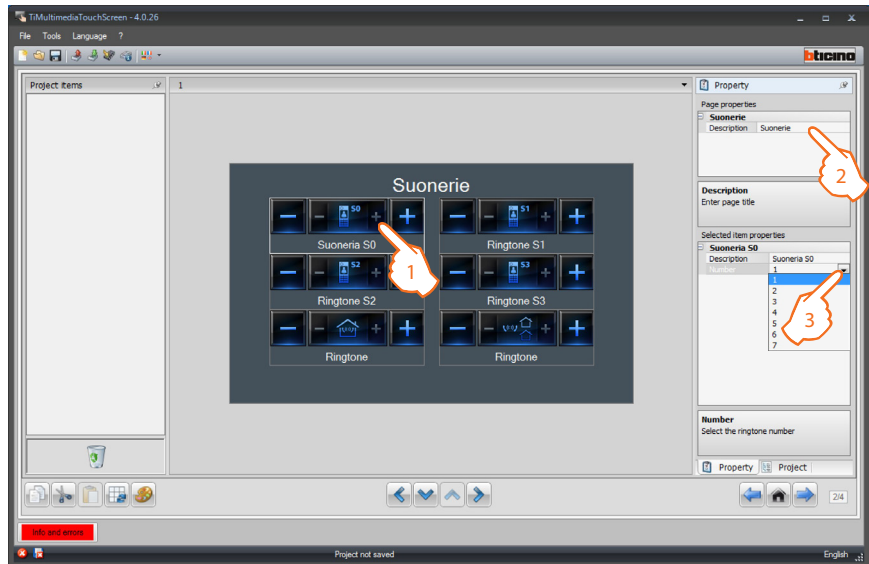
Once the configuration operation has been completed, click  to go to the next page.





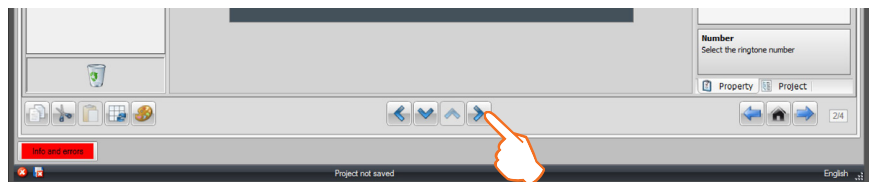
**Ringtones configuration:**

Drag the objects from the "Project items" area to the "Display" area, or simply double click on the object with the mouse.



1. Select an object of the Display area:
2. A personalised description of the page can be entered in the "Page properties" area.
3. Inside the "Selected item properties" area it will be possible to enter a customised description of the selected object and select the associated ringtones.

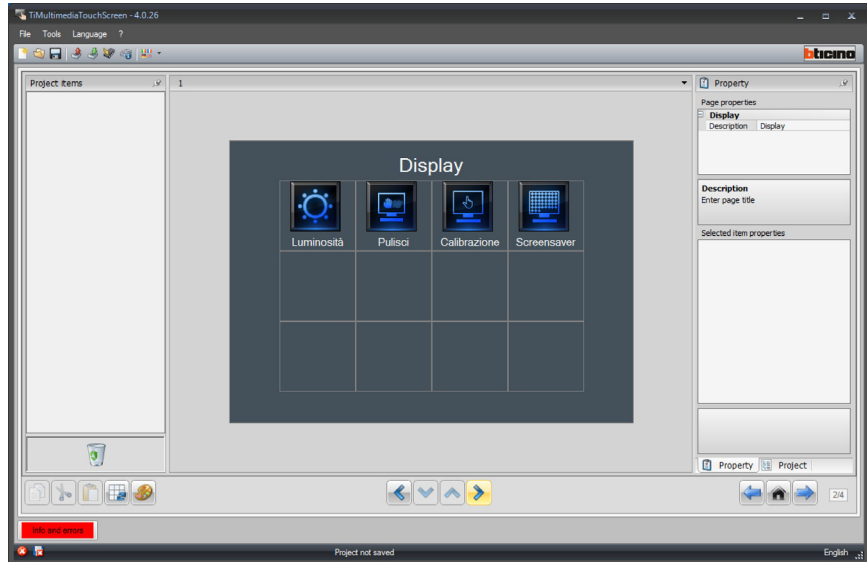
Once the configuration of the bells has been completed, click  to go to the next page.



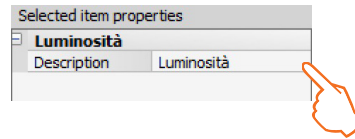


**Screen (Display) configuration:**

Drag the objects from the “Project items” area to the “Display” area, or simply double click on the object with the mouse.



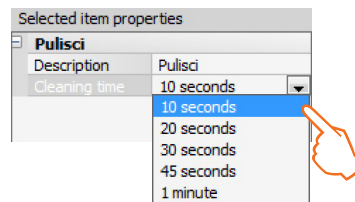
**Brightness:**




It gives the possibility to enter a customised description of the **Brightness** object.



**Clean screen:**

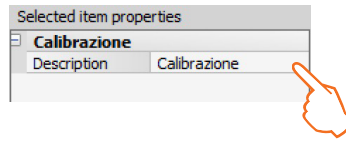


 Never clean using solvents, thinners etc., or abrasive products. Only use the cloth provided.

- **Description:** It gives the possibility to enter a unique description of the **Clean screen** object.
- **Cleaning time:** it gives the possibility to select a time intervals, from 10 seconds to 1 minute. The Touch screen will be deactivated for the selected period, to enable cleaning.



**Calibration:**



It gives the possibility to enter a unique description of the **Volume** object.



**Screensaver:**

it enables selecting a customised description for the Screensaver object, as well as the **Screensaver** type (none, time, text, photos).

**None**

Selected item properties	
Screensaver	
Description	Screensaver
Type	None
Screen off	30 seconds

**Time**

Selected item properties	
Screensaver	
Description	Screensaver
Type	Time
Wait	30 seconds
Screen off	30 seconds


**Text**

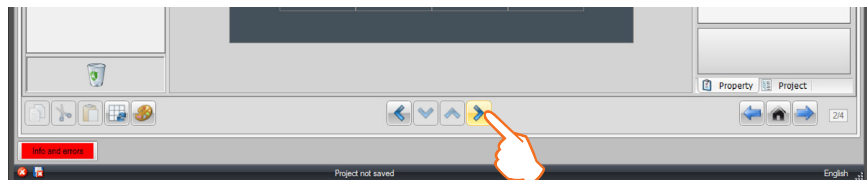
Selected item properties	
Screensaver	
Description	Screensaver
Type	Text
Wait	30 seconds
Screen off	30 seconds
Text	Btiano

**Photos**

Selected item properties	
Screensaver	
Description	Screensaver
Type	Photos
Wait	30 seconds
Screen off	30 seconds
Time	7 seconds

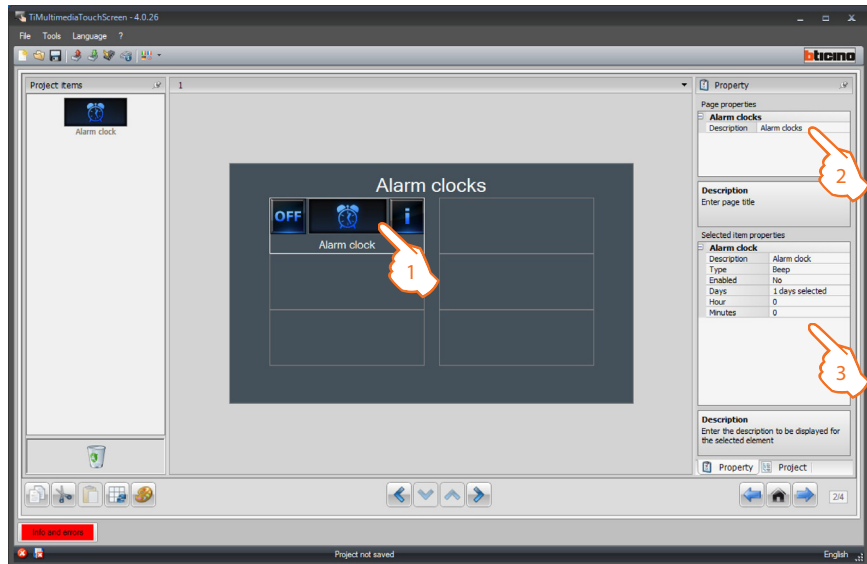
- **Switch screen off:** to select the time delay (from 30 seconds to 5 minutes max) after which the Multimedia Touch Screen goes in stand-by. The screen will go black until the Multimedia Touch Screen glass is touched again.
- **Wait:** to select the time delay (from 30 seconds to 2 minutes max) before the activation of the screensaver.
- **Time:** manually enter a time from 2 to 60 seconds for playback between one image and the next of the screensaver.
- **Text:** manually enter a text message, which will be displayed on the Multimedia Touch Screen.

Once the **Screensaver** configuration operation has been completed, click the pushbutton  to go to the next page.



**Alarm clock configuration:**

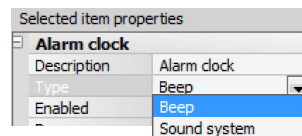
Drag the objects in the “Project items” area to the “Display area”, or simply double click the relevant objects with the mouse.



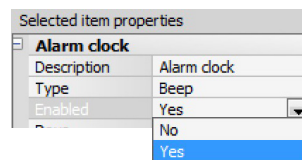
1. Select an object of the Display area.
2. A personalised description of the page can be entered in the “Page properties” area.
3. Inside the “Selected item properties” area it will be possible to enter a customised description of the selected object.

**Alarm clock configuration:**

- **Type:** select the type of ringtone, either Beep (basic), or Sound system.

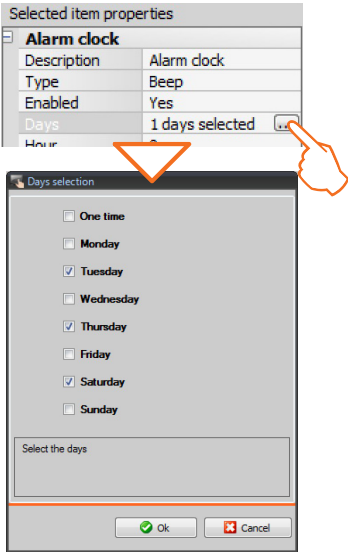


- **Enabled:** it is possible to enable or disable the alarm clock without losing the settings.

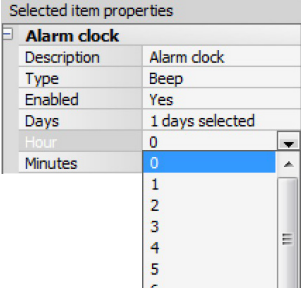




- **Days:** select the day/days during which the alarm clock will be active.



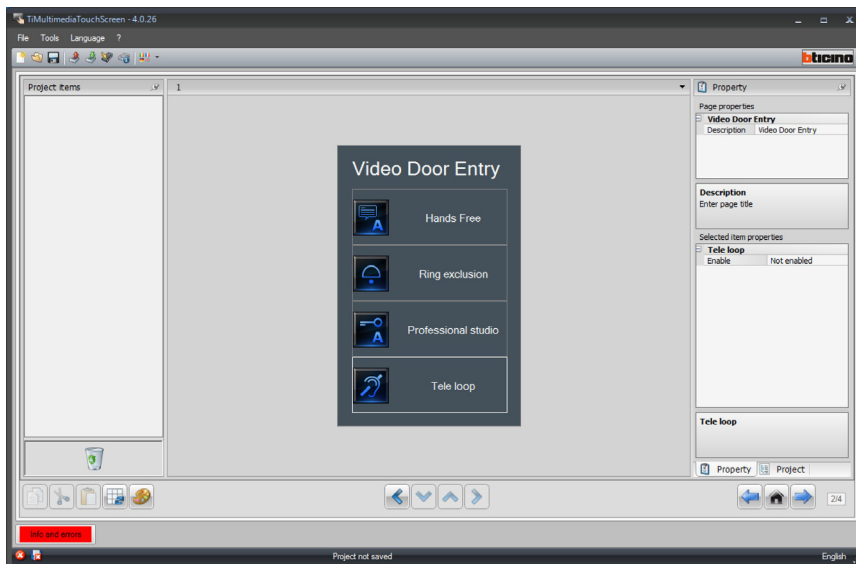
- **Hour – Minutes:** Set the time, Hour and Minutes, when the alarm clock will activate:





**Video door entry system configuration:**

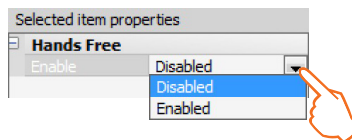
Drag the objects in the “Project items” area to the “Display” area, or simply double click the relevant objects with the mouse.



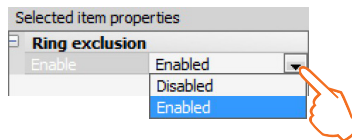
The following video door entry system functions may be included and enabled



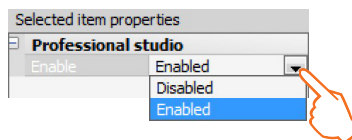
**Hands free:**



**Ring exclusion**

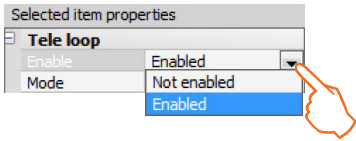


**Professional studio**

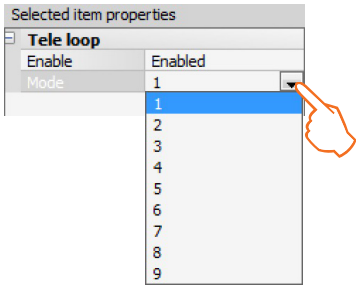




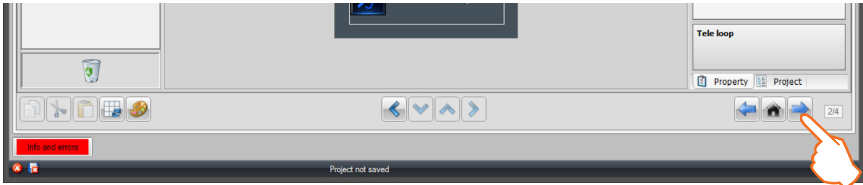
Tele Loop:



After enabling the function, the mode must be set: this must be the same as the one of the Tele loop to connect.



Once all the settings have been configured, click to go to the page for the selection/creation of the ringtones.

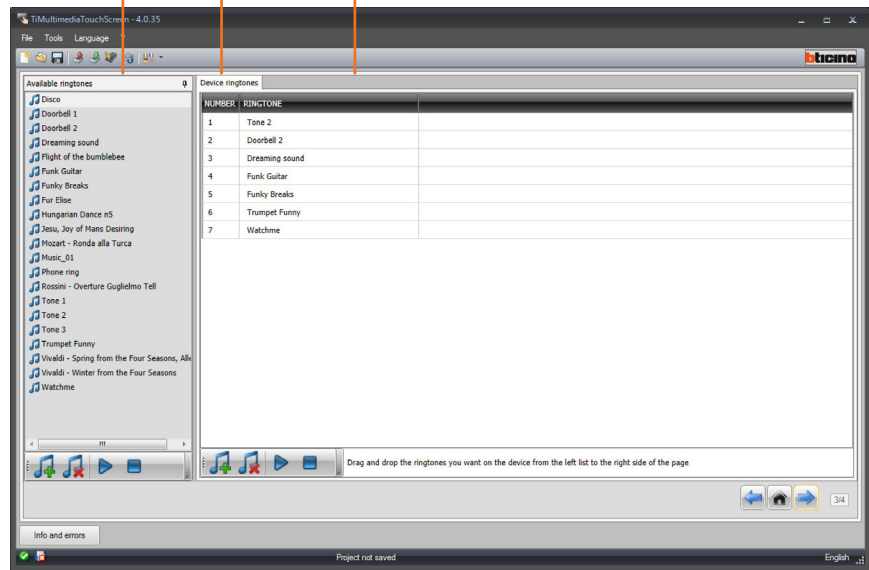


### 4.15 Ringtone configuration

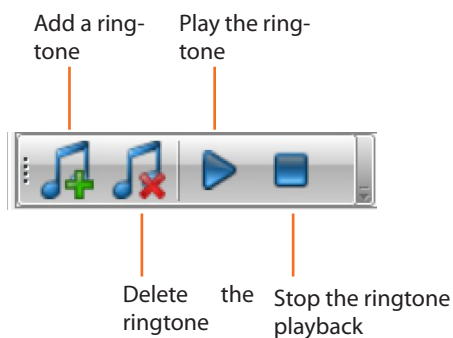
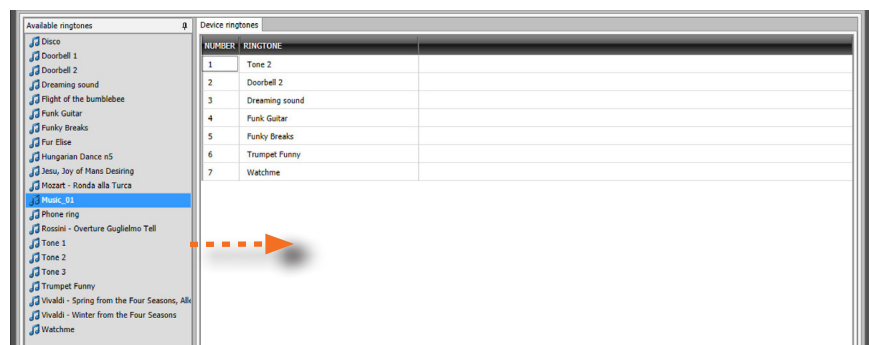
This function can be used to customise the list of ringtones that the user can link to system events (e.g. call from an entrance panel).

Up to ten ringtones can be sent to the device. These can be selected among the ones available with the software, or the user may create their own ringtones starting from audio files saved in the PC.

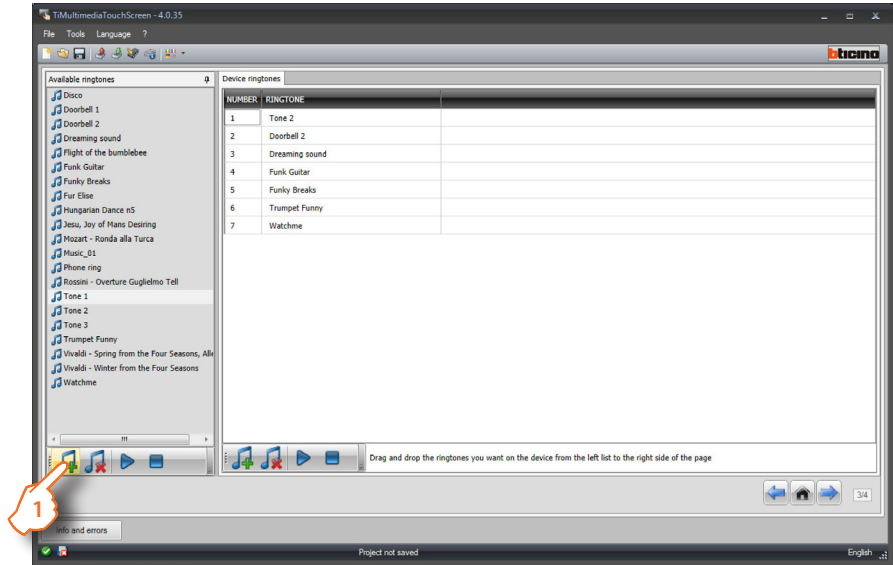
Ringtones available for the project
Ringtone no. (max 10)
Ringtone name
Device ringtones



To add a ringtone to send to the device, select the ringtone among the ones available and drag it to the section on the right of the page.

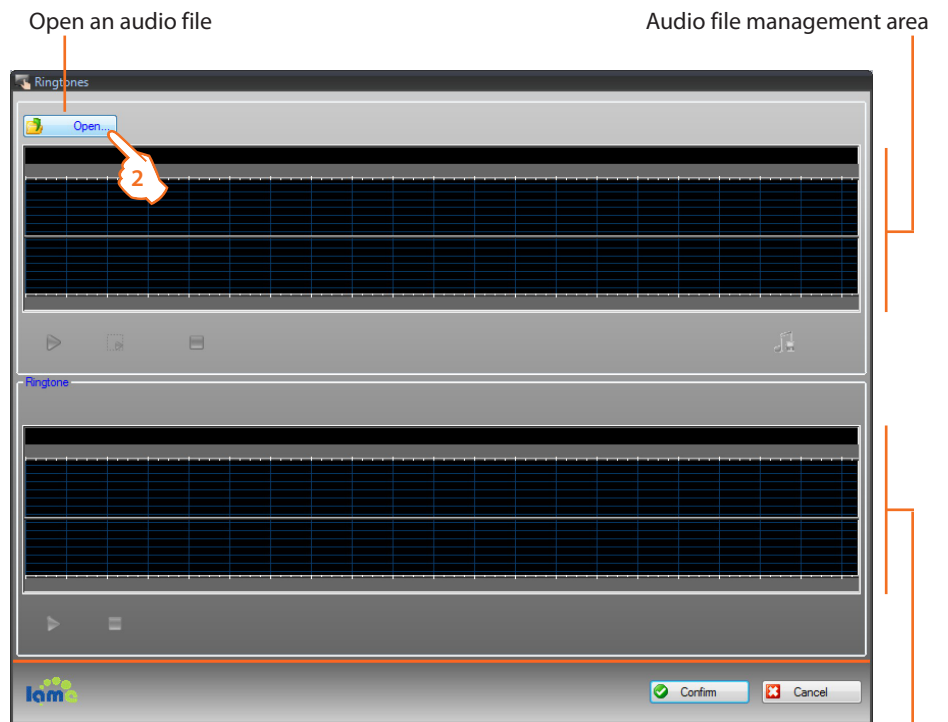


Creating a new ringtone



1> Click to create a ringtone and make it available in the software.

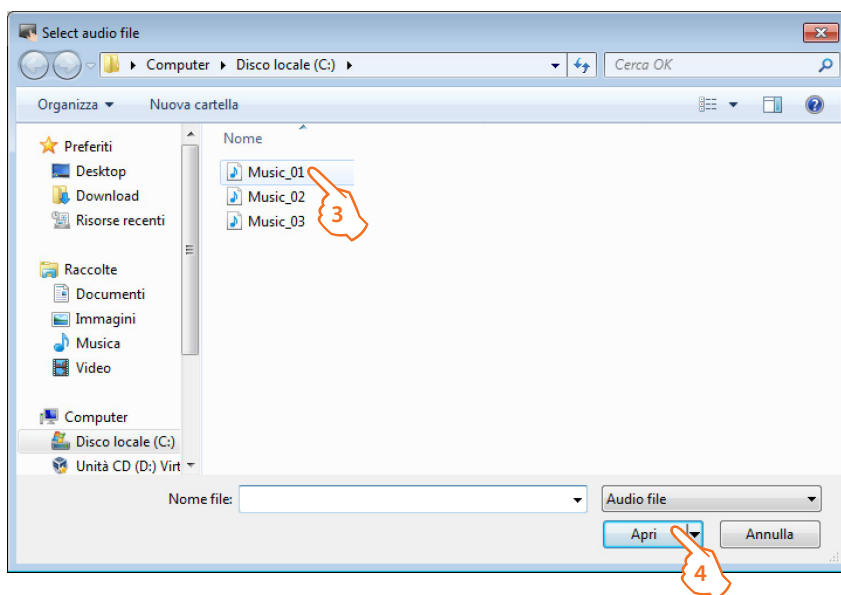
The following window appears:



2> Click to search for the audio file.

Import the ringtone created  
Ringtone management area

The following window appears:



3> Select an audio file (.mp3, .wav, .pcm).

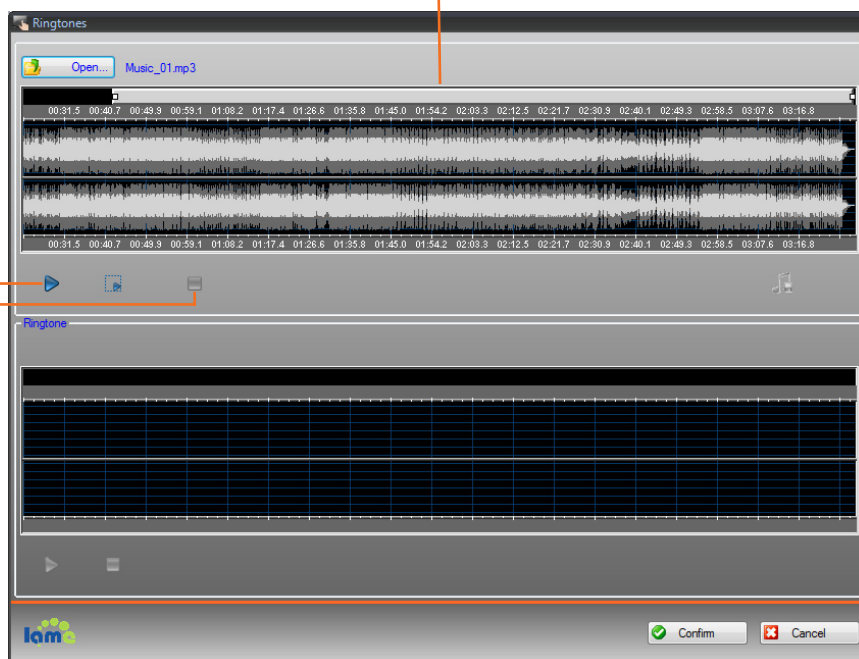
4> Click to open.

The audio file is loaded and displayed in the window.

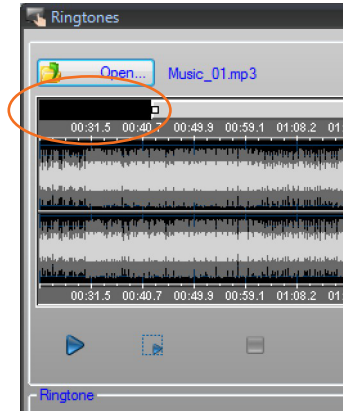
Play the audio file

Zoom bar

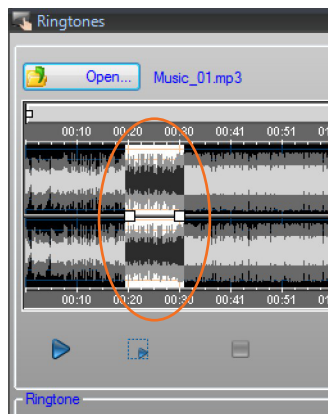
Audio file window



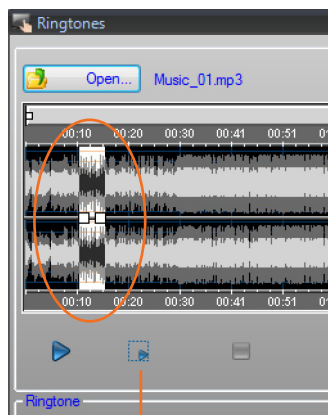
Stop the file playback



Use the zoom bar to display the track sections in details.



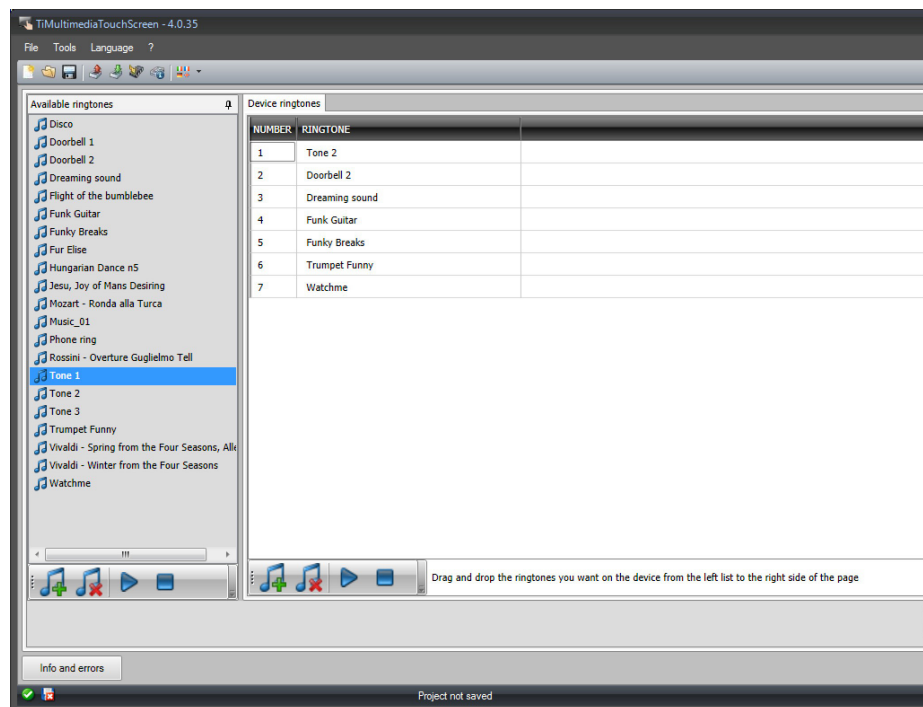
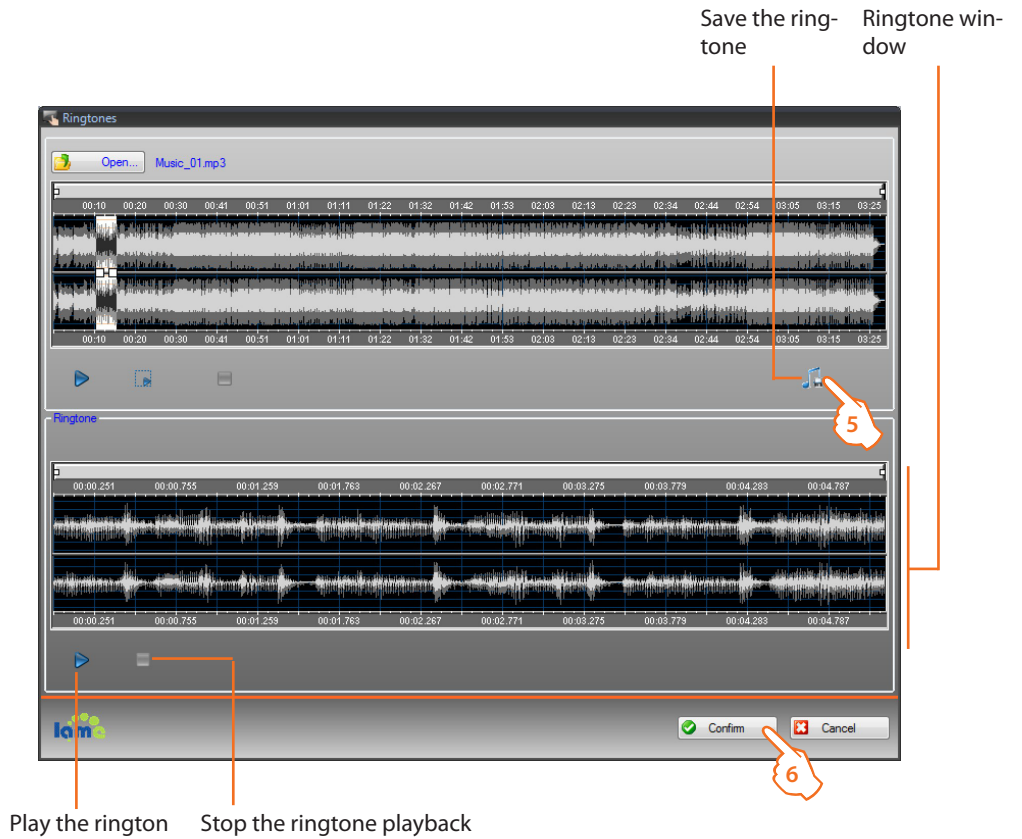
Move the cursor to the time bar, click and hold down the left mouse button to set the ringtone length; the software will automatically resize the ringtone (5 seconds max).



Click and drag the selection to select the section of the track to use as ringtone.

Plays the selected section of the track

- 5> The ringtone can now be saved.
- 6> Click to import the ringtone in the project.

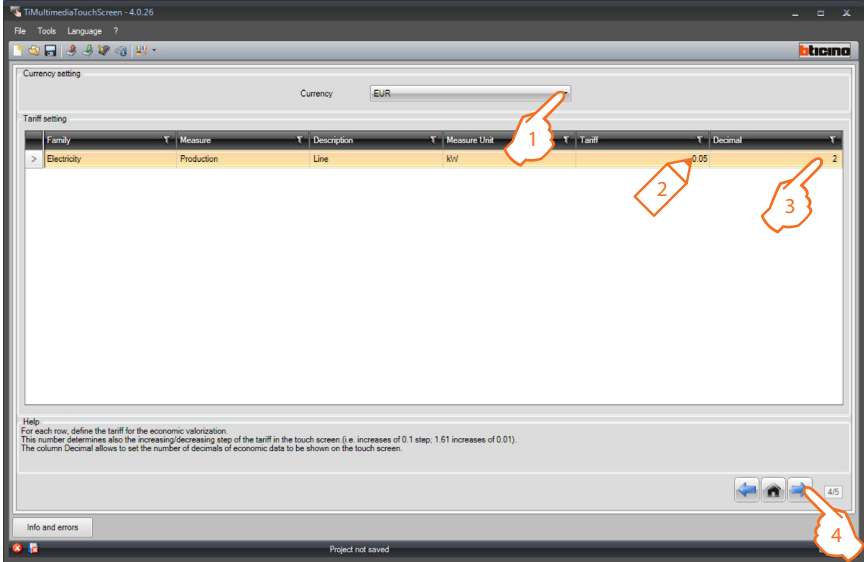


The ringtone is now saved in the software, and can therefore be used for other projects.



4.16 Setting the currency

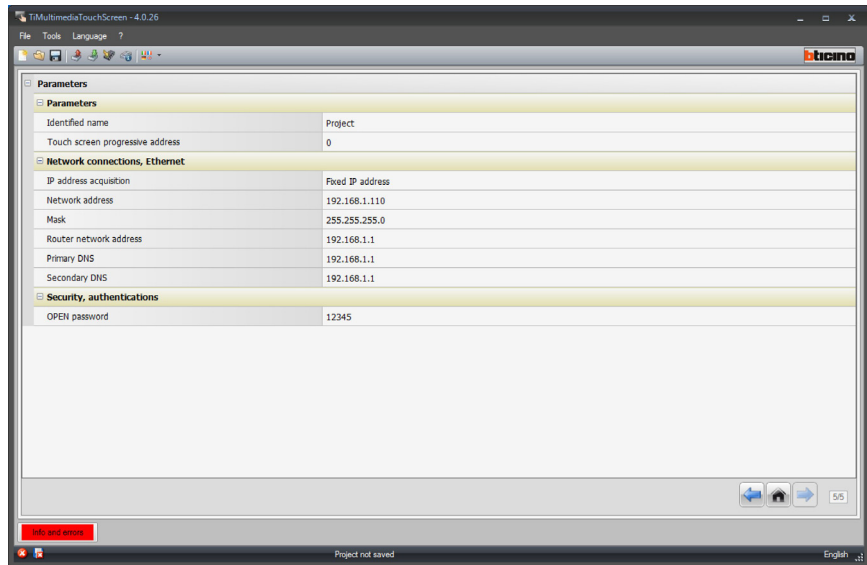
This page can be used to set the tariffs applied to the consumptions set in the "Energy Data" section.



1. Select the currency.
2. Enter the tariff value.
3. Enter the number of decimals to display on Local Display for evaluation purposes.
4. Once the customisation/configuration of the page has been completed, click to go to the next page.

### 4.17 General Device Parameters

This screen can be used to set the device configuration parameters.



- **Parameters**  
*Identified name:* Enter the project name  
*Touch screen progressive address:* enter the identification number of the device on the system
- **Network connections, Ethernet**  
*IP address acquisition*  
*Network address*  
*Mask*  
*Router network address*  
*Primary DSN*  
*Secondary DSN*
- **Security, authentications**  
*Open Password:* enter the OPEN password for the remote control of the My Home system.



**BTicino SpA**

Via Messina, 38  
20154 Milano - Italy  
[www.bticino.com](http://www.bticino.com)